

National Transport Model 2008 Forecasts

Malcolm Jay, National Transport Modelling Team.

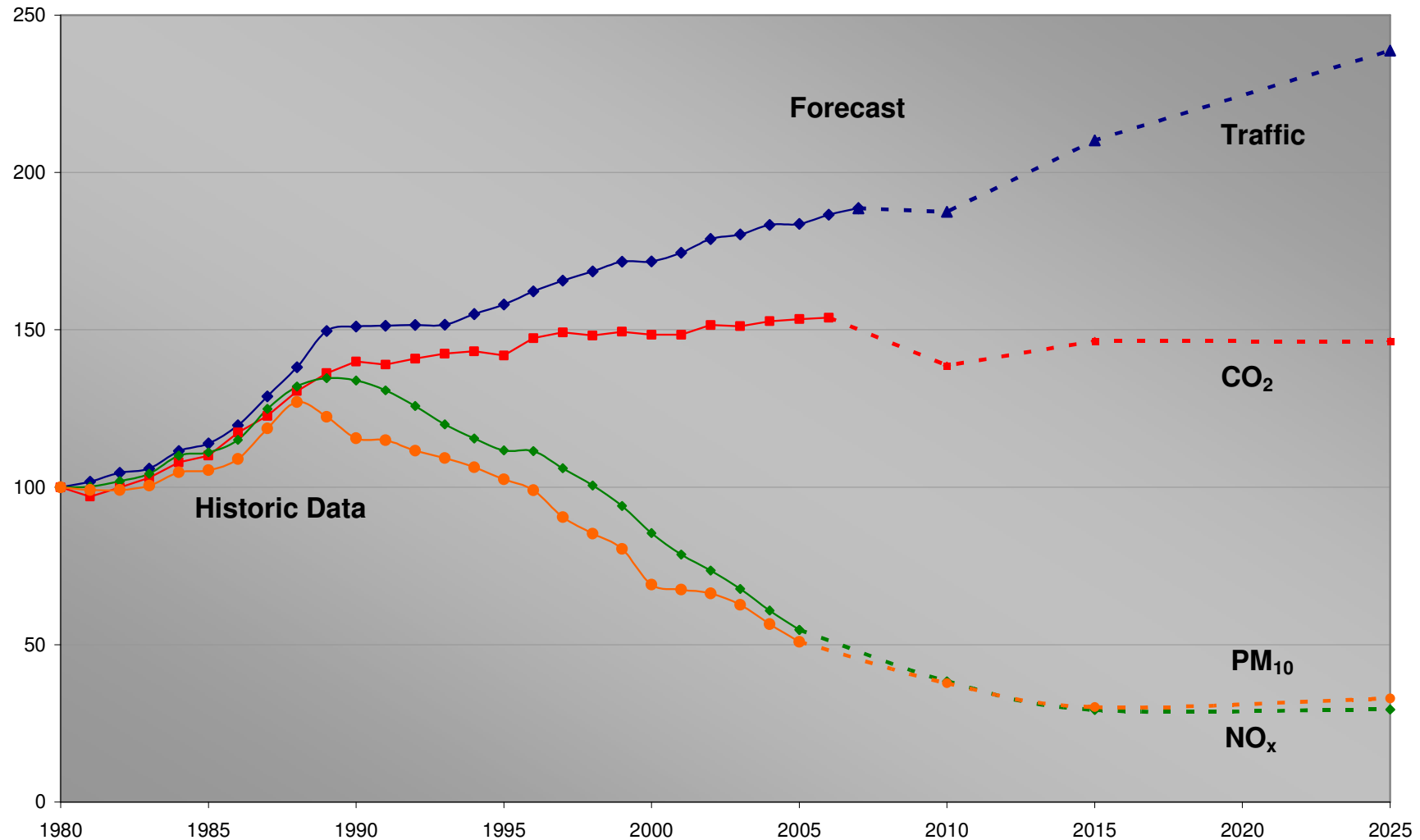
Annual Forecast 2008

Summary of Key Results

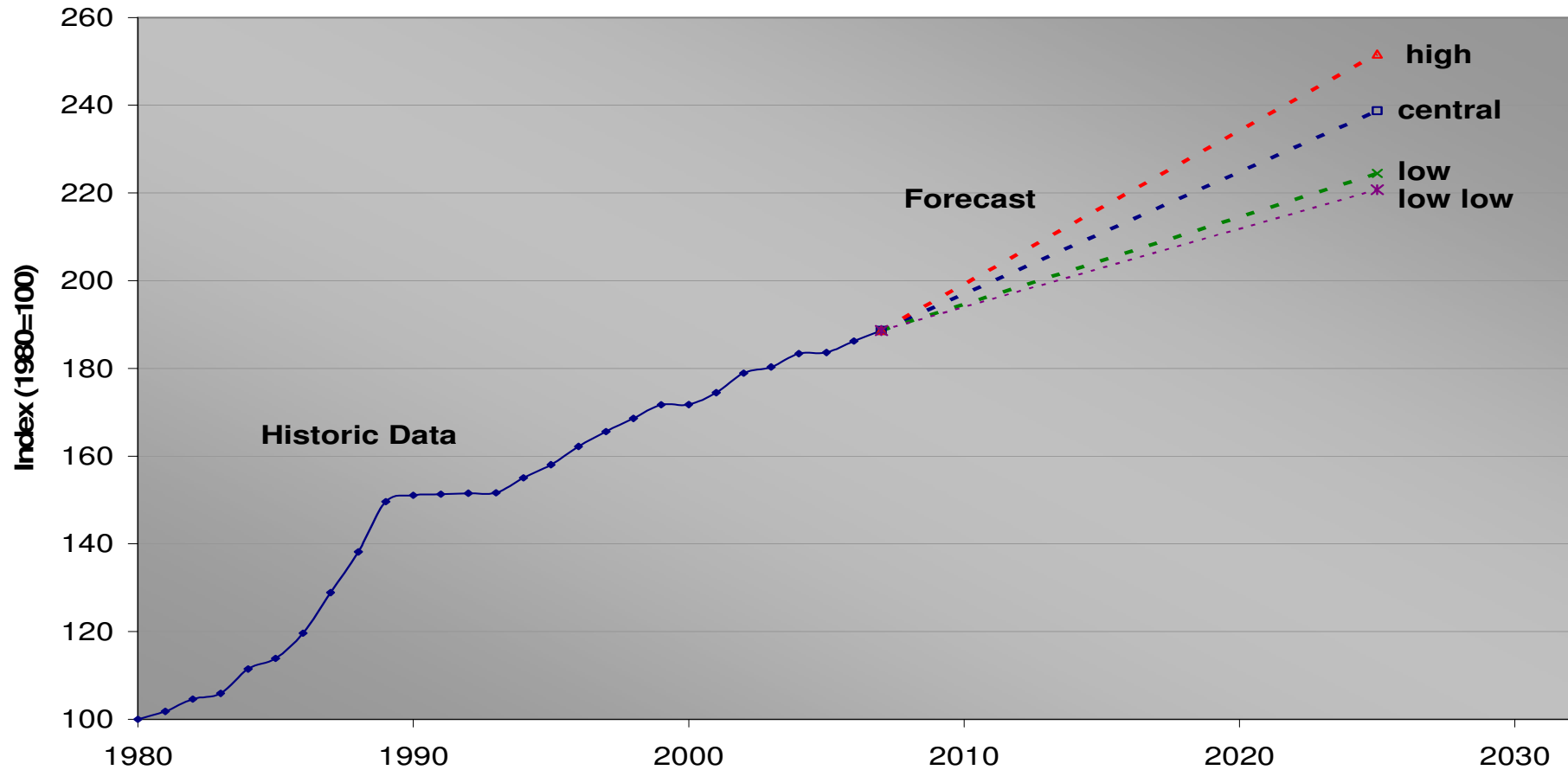
England, Forecast Change compared to 2003	Year	Traffic (Vehicle km)	Congestion (Lost time/km)	Journey Time (time/km)	Road Traffic Total Emissions		
					CO ₂	PM ₁₀	NO _x
Central Forecast	2010	4%	1%	0%	-8%	-40%	-43%
	2015	17%	17%	3%	-3%	-52%	-57%
	2025	32%	37%	6%	-3%	-48%	-57%

Traffic and congestion continue to grow, CO₂ stabilises and air pollutants continue to fall, as pollutant standards tighten.

NTM: 2008 Forecasts



NTM: 2008 Traffic Forecast

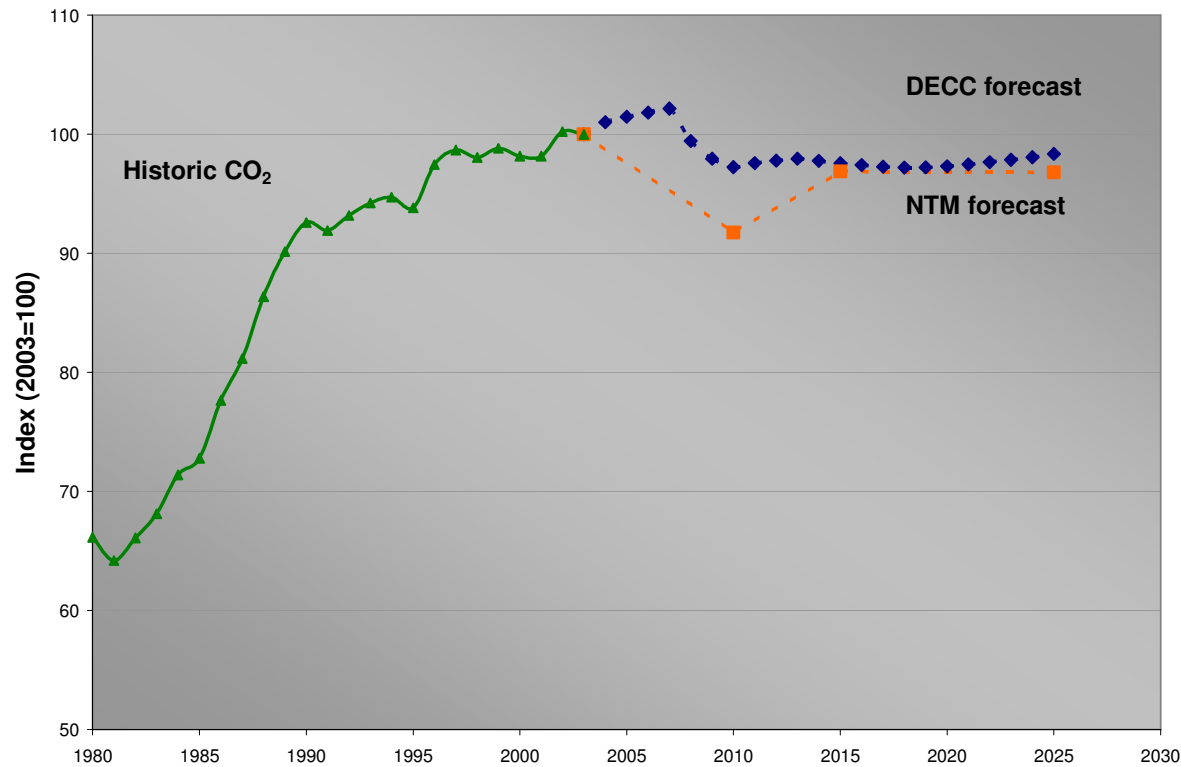


Central Forecast (32%) with high/low fan (22% to 40%)
Annual average rate: 1.3%

Key Forecast Assumptions

- Population & Employment: Population to rise by 14.5% between 2003 and 2025 and employment still rising. However, population ageing over time so overall trip rates are falling.
- Income/GDP: Short term growth for 2010 is 11.5% from 2003 in line with Nov 08 pre-budget report (1.6%pa). Longer term growth assumed to be around 2.5%pa over whole forecast.
- Fuel Costs: Based on BERR 2008 projections. Central projection for 2025 is \$72.5 per barrel in 2007 prices. Low and high scenarios are \$45 and \$100 and all are about \$20 higher than previously.
- Fuel Efficiency: New car CO₂ reaches 130g/Km by 2015 and efficiency improvements assumed to continue at a similar rate of approximately 1.5% per annum. Petrol cars 1.6% pa; Diesel cars 1.1% pa together with continued shift to diesel results in overall improvement of 1.6%pa.
- Vehicle Standards: Euro 4 for light vehicles in 2006; Euro 5 for heavy vehicles from 2009 and light vehicles from 2011.
- Forecasts also include 5% Biofuels reduction by 2010 in line with RTFO
- Report is on Department's website at:
<http://www.dft.gov.uk/pgr/economics/ntm/roadtransportforecasts08/>

Other CO₂ Forecasts



- Forecasts have many common assumptions; GDP, population, fuel prices & efficiency and biofuels etc
- Both show a break with trend and a fall to 2010
- Forecasts are very similar (DECC 1.5% higher in 2025) and within the forecast fan range.

2009 Forecasts

- To be published later in Autumn,
- Will Include forecast for 2035 but not 2010,
- Will include new TRL (2008) speed emissions data and up-dated fleet composition data,
- Revised GDP assumptions (budget 2009),
- Revised Fuel price and Vehicle Efficiency assumptions,
- Other revised policy assumptions including new National roads programme (based on hard shoulder running) and also including road schemes for devolved administrations.