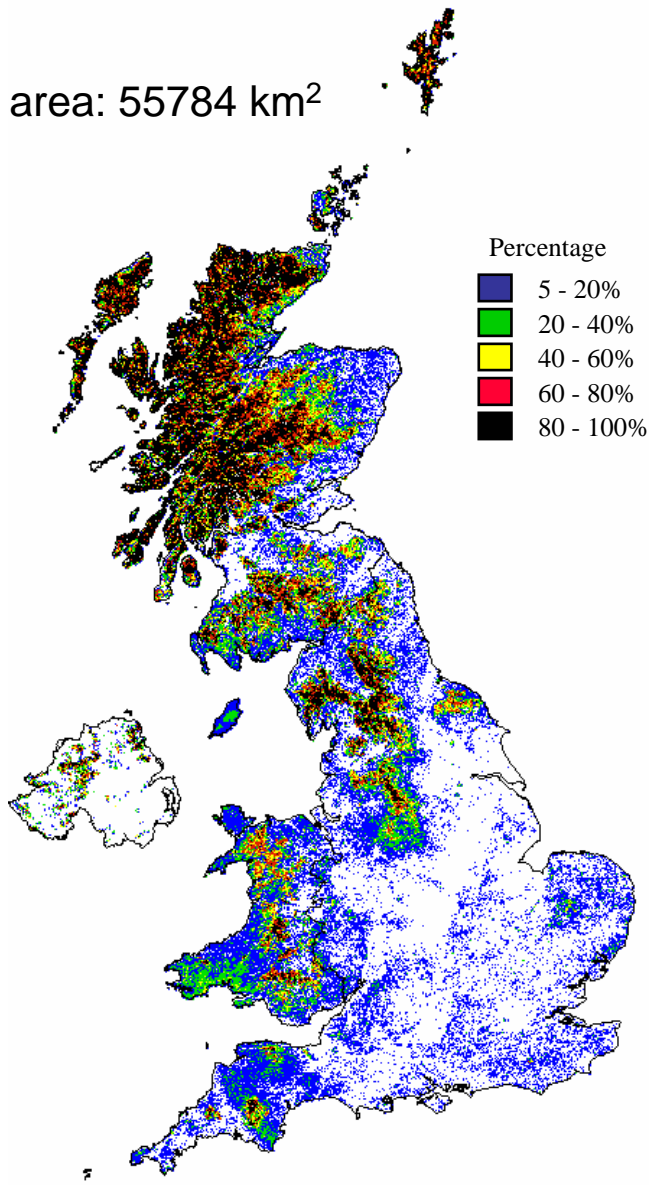


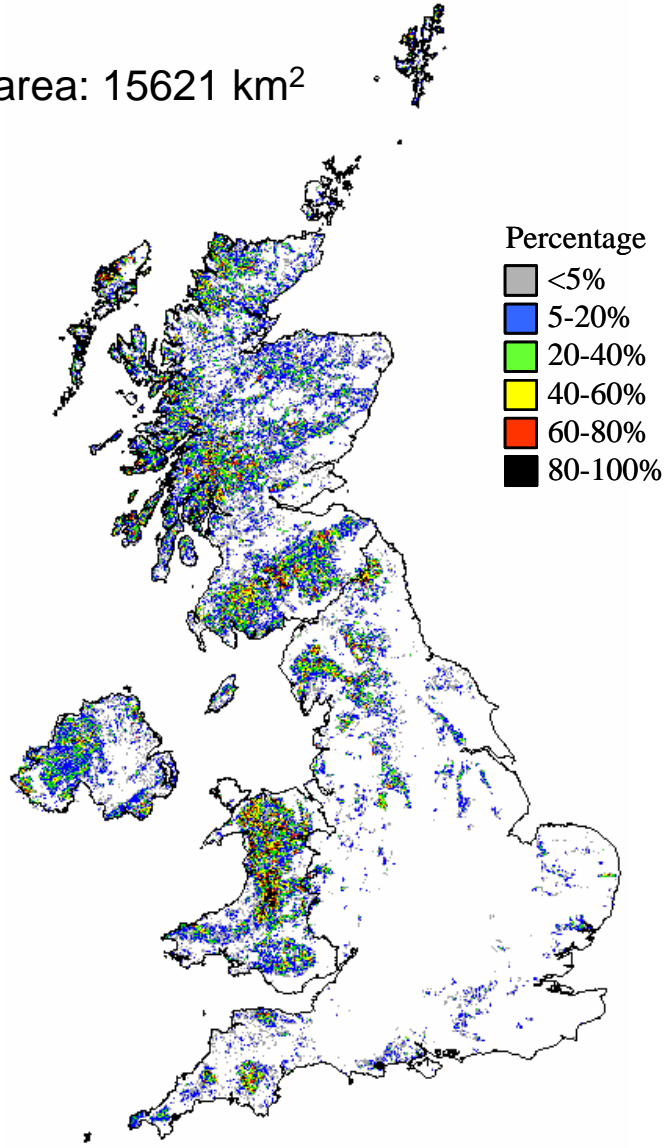
2001 Ecosystem: Acid grassland

Total area: 55784 km²



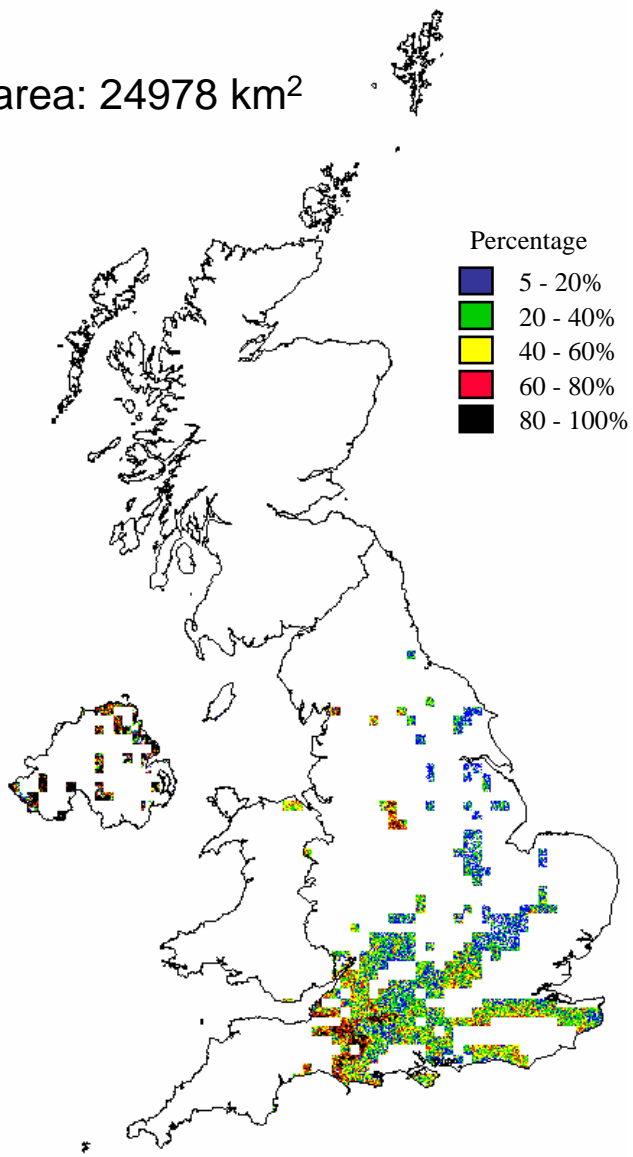
2003 Broad Habitat: Acid grassland (wet & dry acid grassland combined)

Total area: 15621 km²



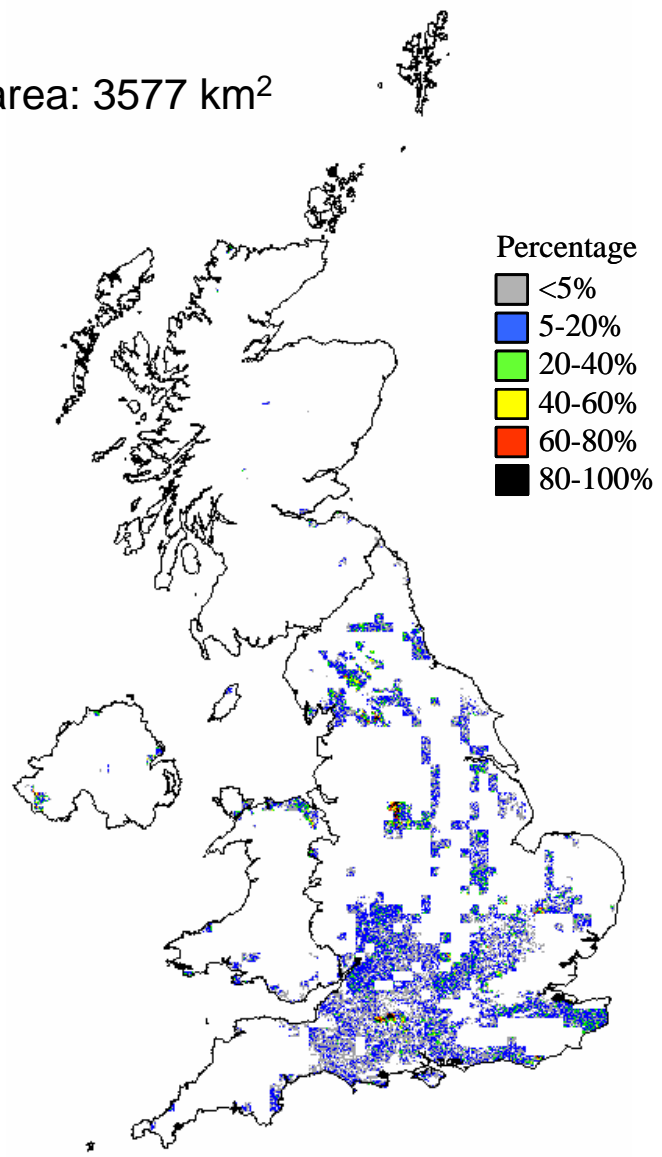
2001 Ecosystem: Calcareous grassland

Total area: 24978 km²



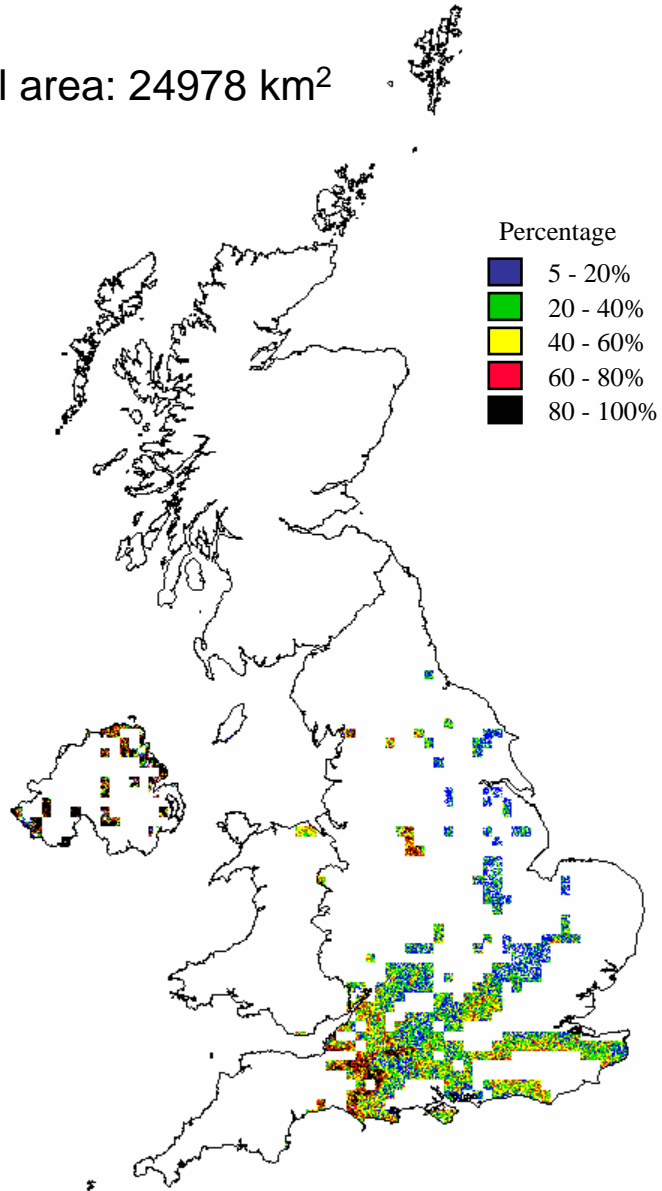
2003 Broad Habitat: Calcareous grassland (as mapped for nutrient nitrogen)

Total area: 3577 km²



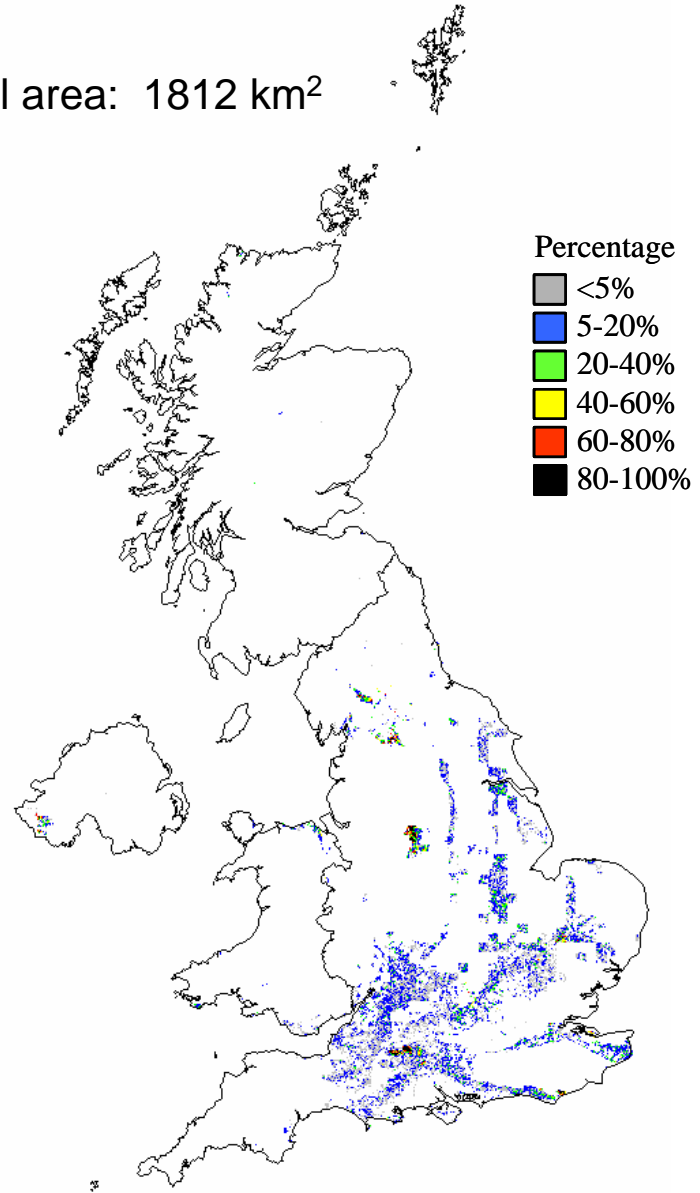
2001 Ecosystem: Calcareous grassland

Total area: 24978 km²



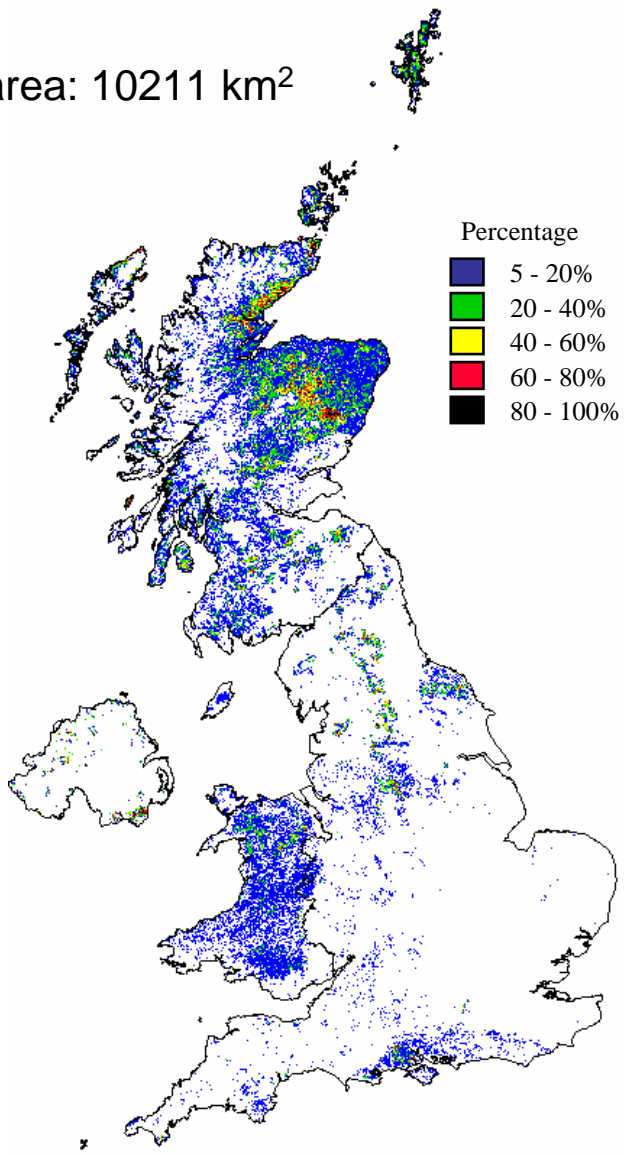
2003 Broad Habitat: Calcareous grassland (as mapped for acidity)

Total area: 1812 km²



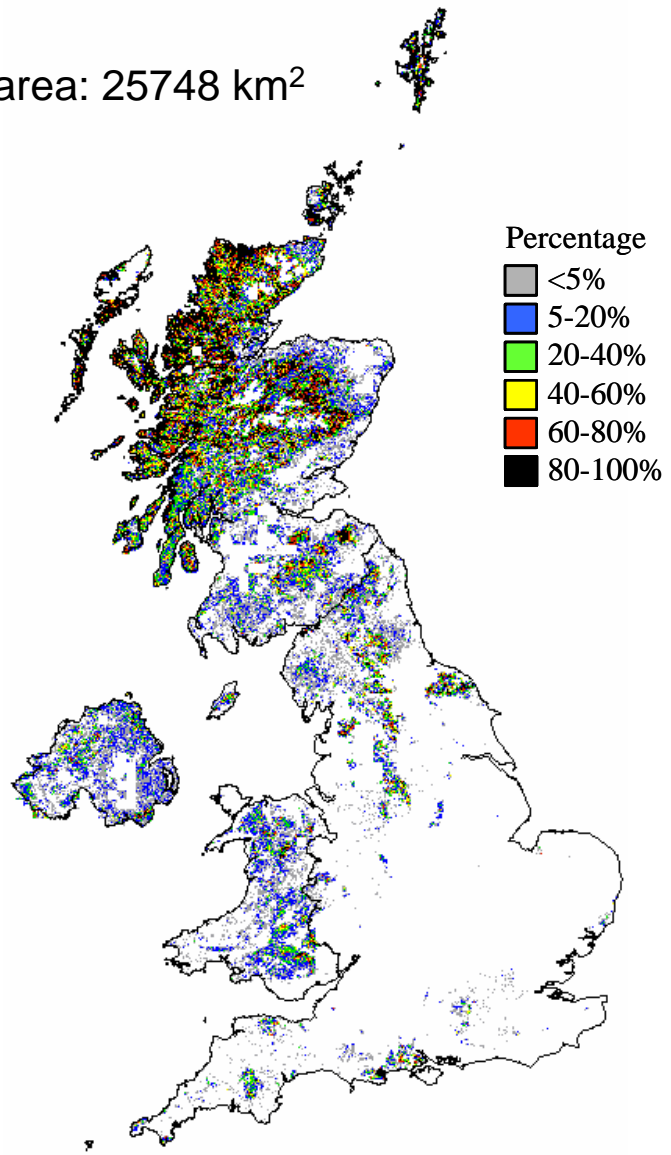
2001 Ecosystem: Heathland

Total area: 10211 km²



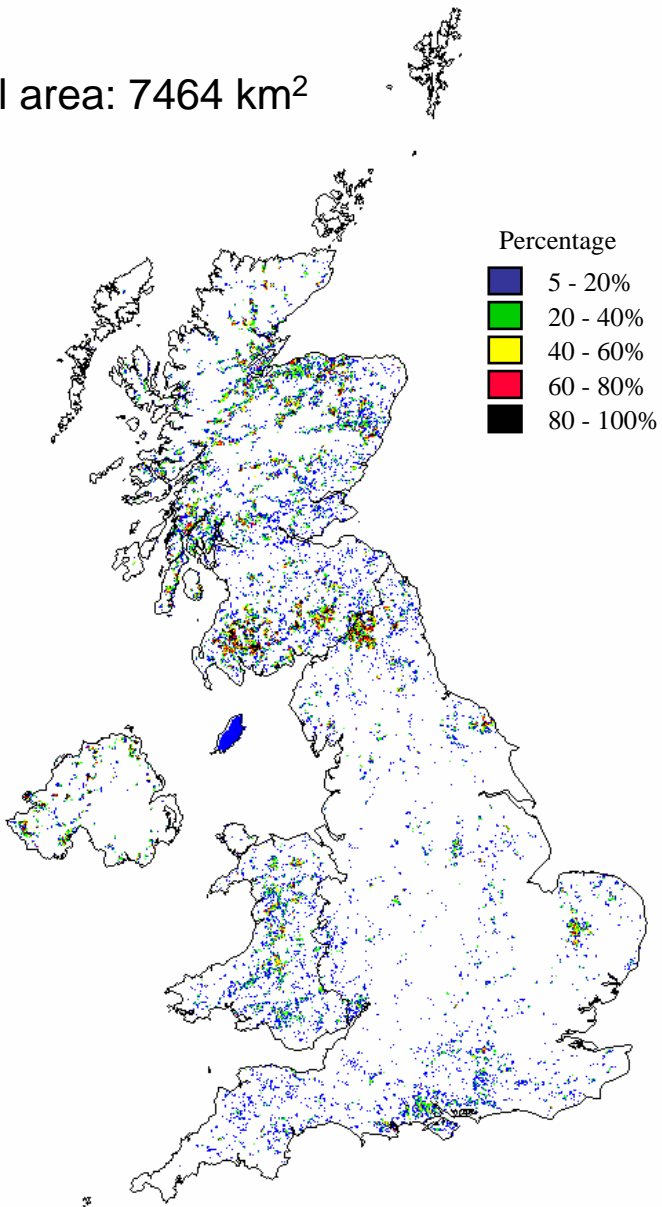
2003 Broad Habitat: Dwarf shrub heath (wet and dry dwarf shrub heath combined)

Total area: 25748 km²



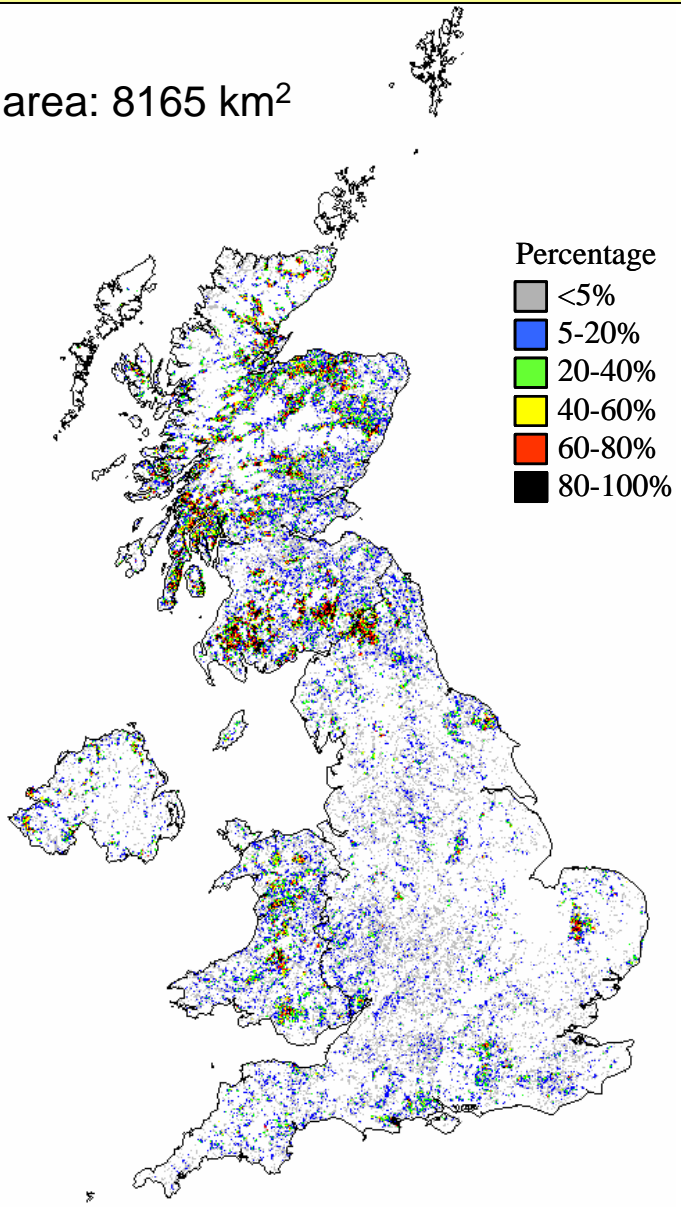
2001 Ecosystem: Coniferous woodland

Total area: 7464 km²



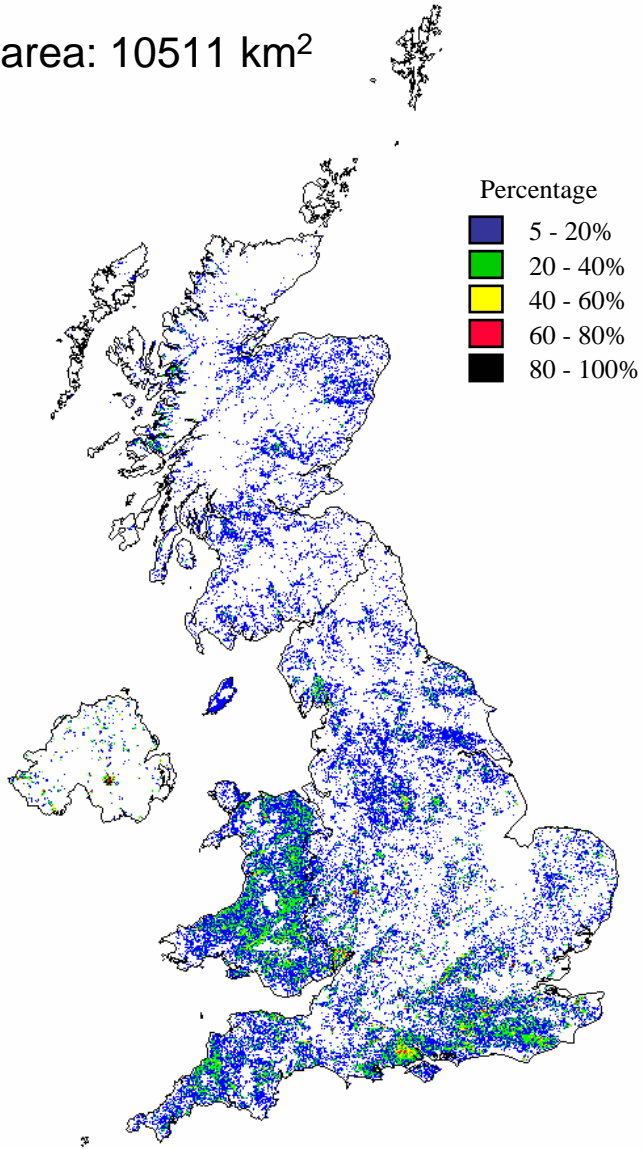
2003 Broad Habitat: Coniferous woodland (managed areas only)

Total area: 8165 km²



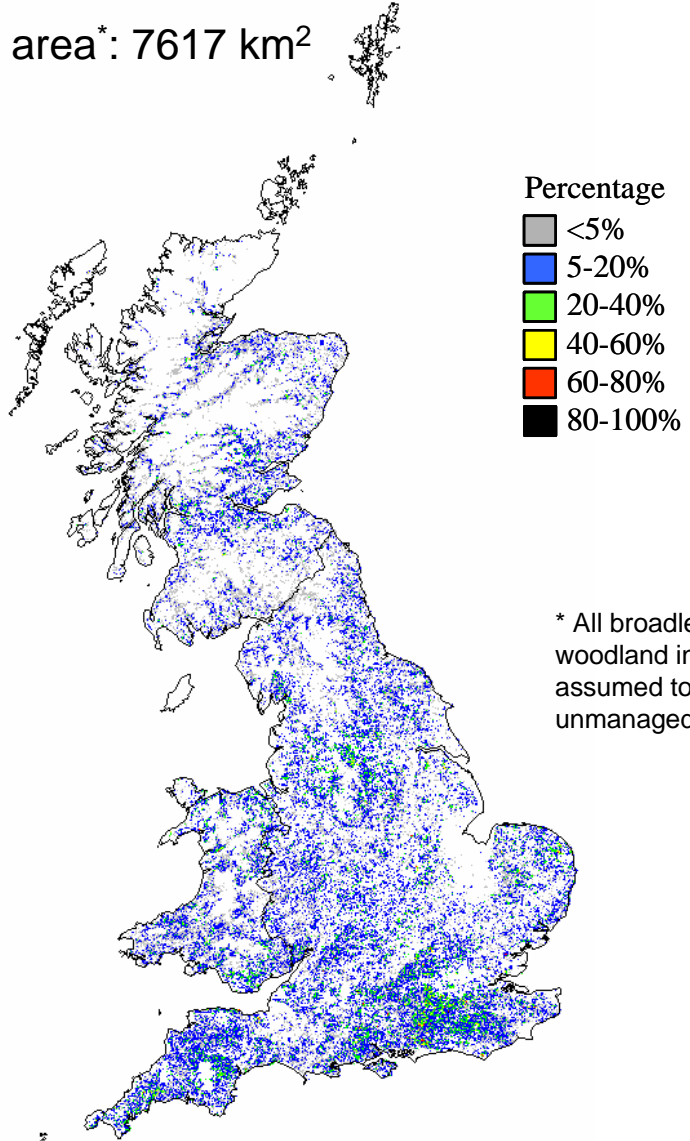
2001 Ecosystem: Deciduous woodland

Total area: 10511 km²



2003 Broad Habitat: Broadleaved, mixed & yew woodland (managed broadleaved woodland only)

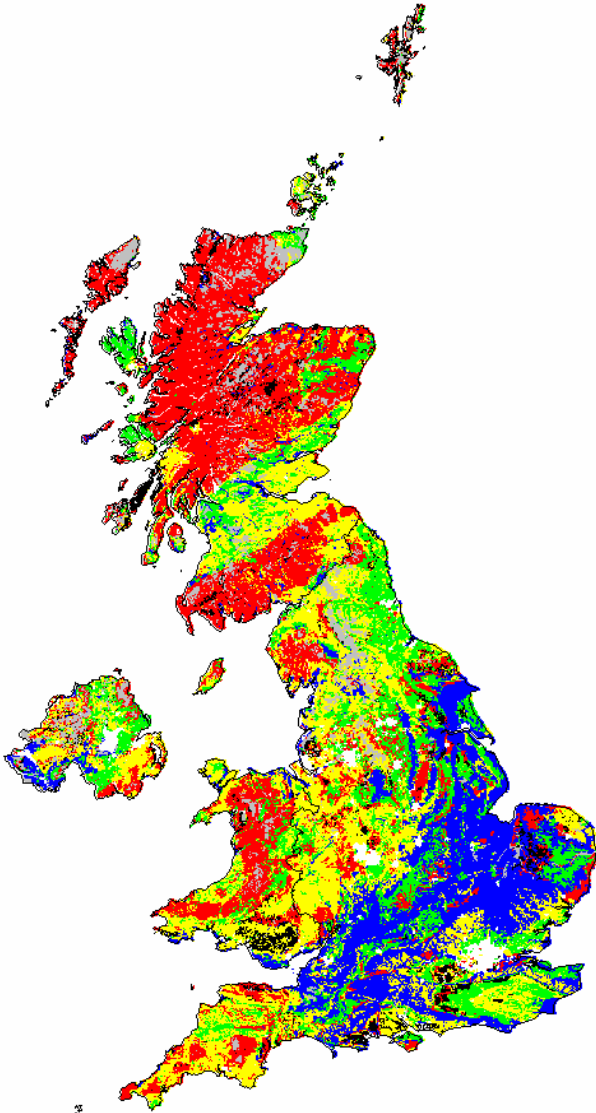
Total area*: 7617 km²



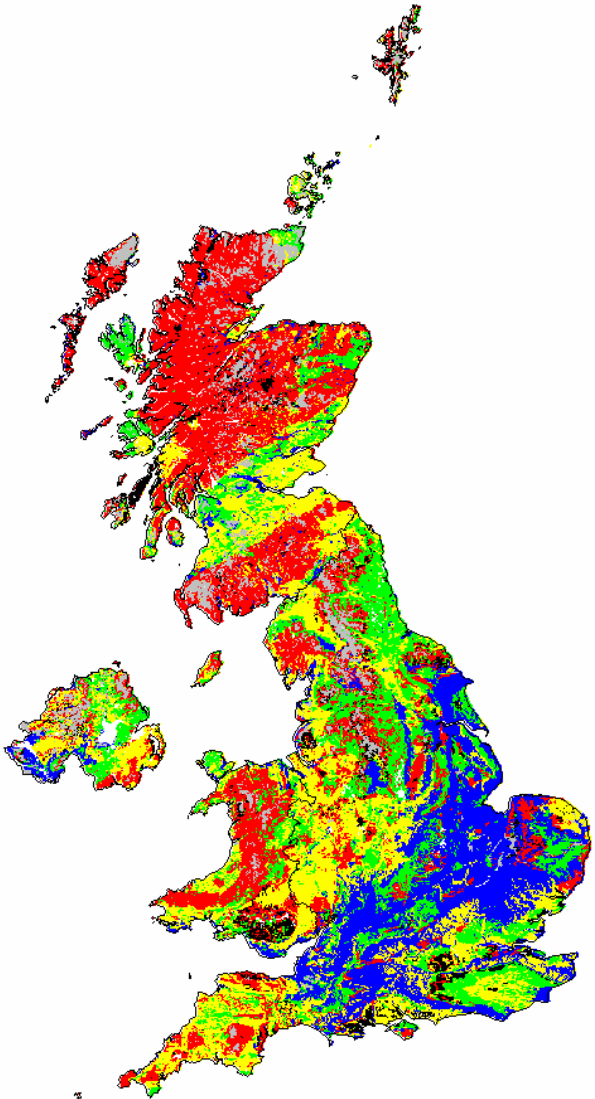
* All broadleaved woodland in NI assumed to be unmanaged

**Empirical critical loads of acidity for non-peat soils
(peat-dominated squares in grey)**

February 2001



February 2003

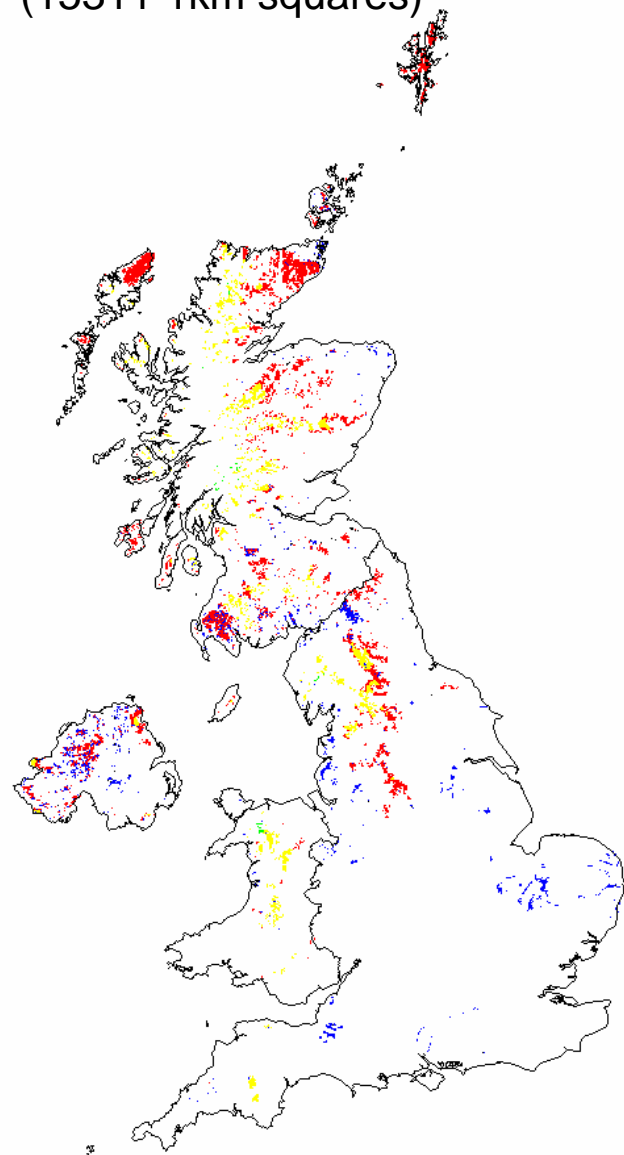
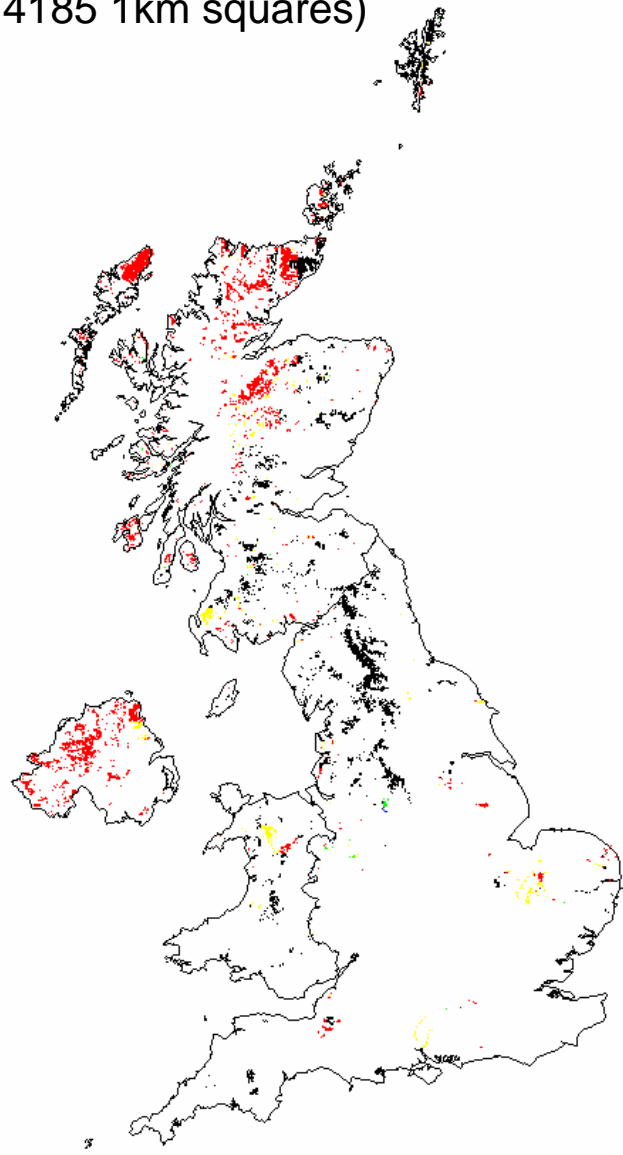


Acidity critical loads for peat-dominated 1km squares

Figure 8.8

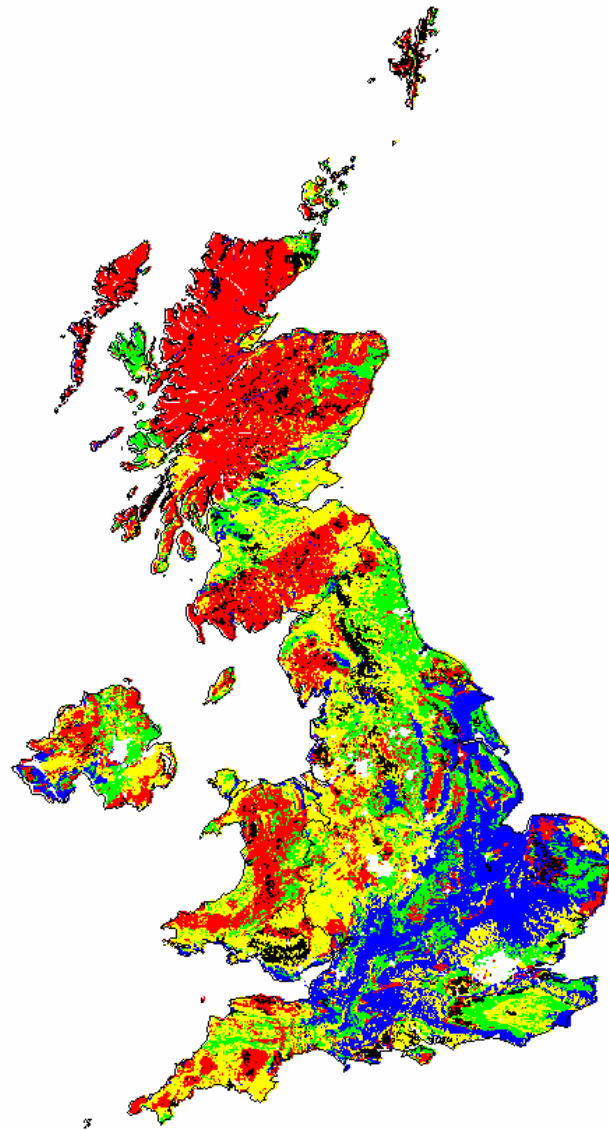
February 2001
(14185 1km squares)

February 2003
(15311 1km squares)

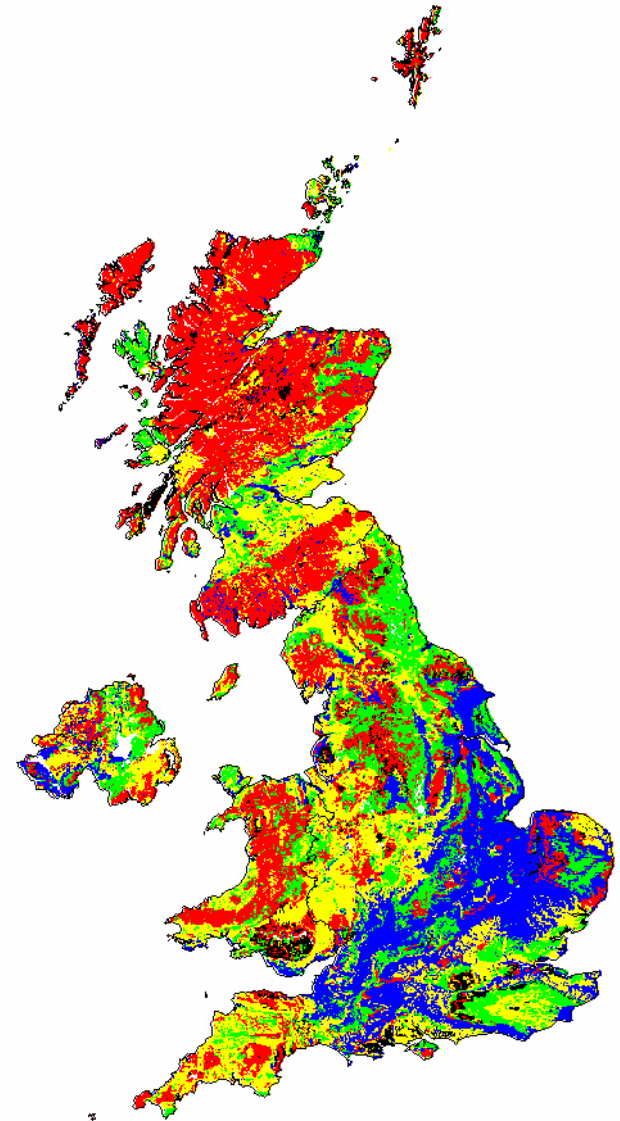
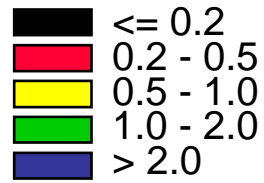


February 2001

February 2003

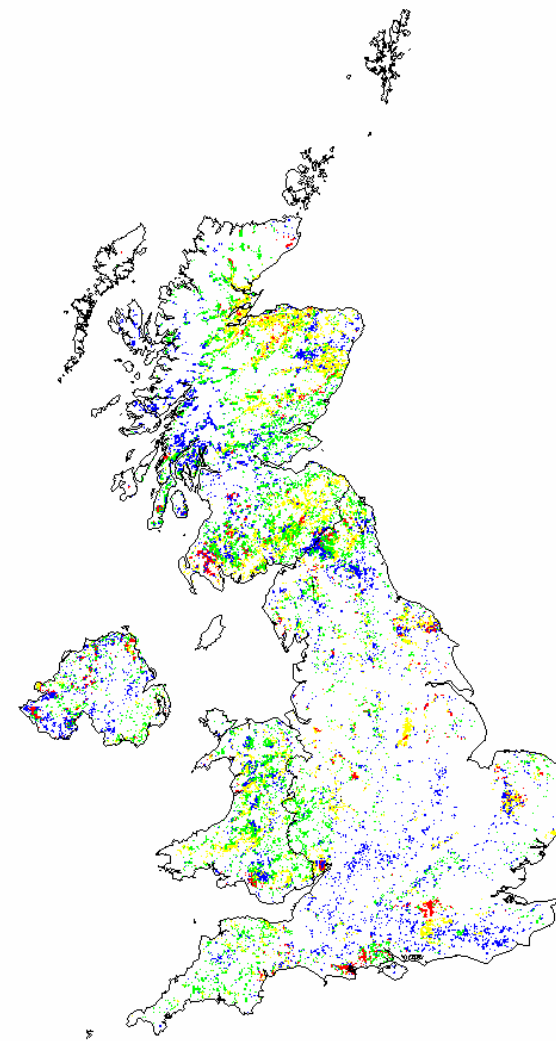
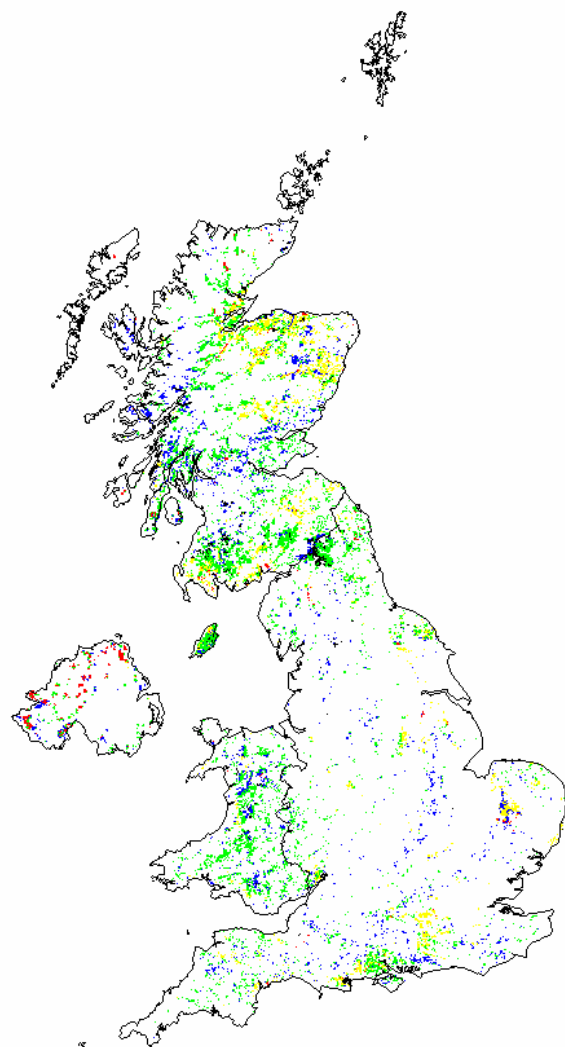


keq ha⁻¹ year⁻¹



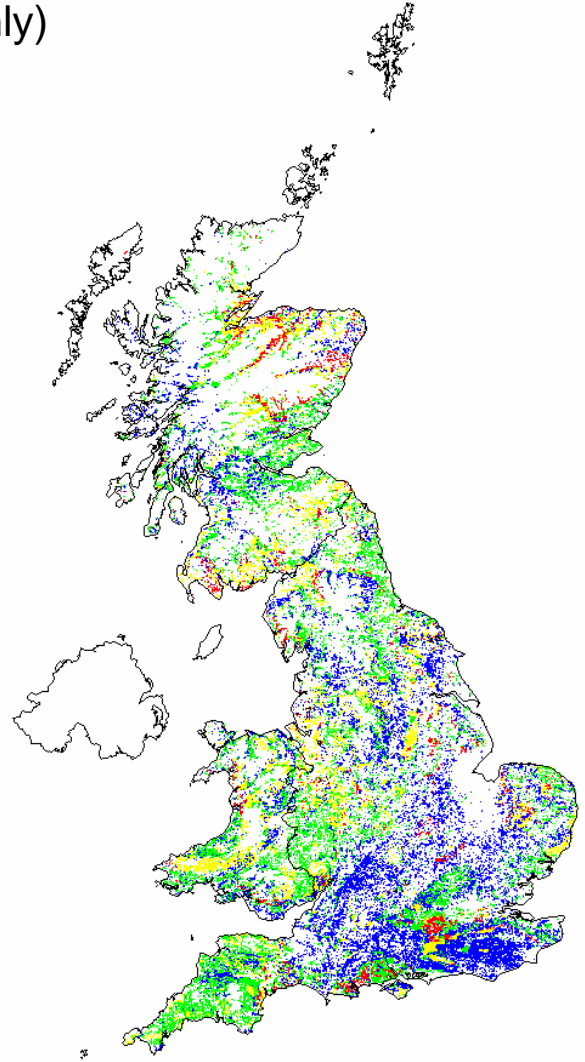
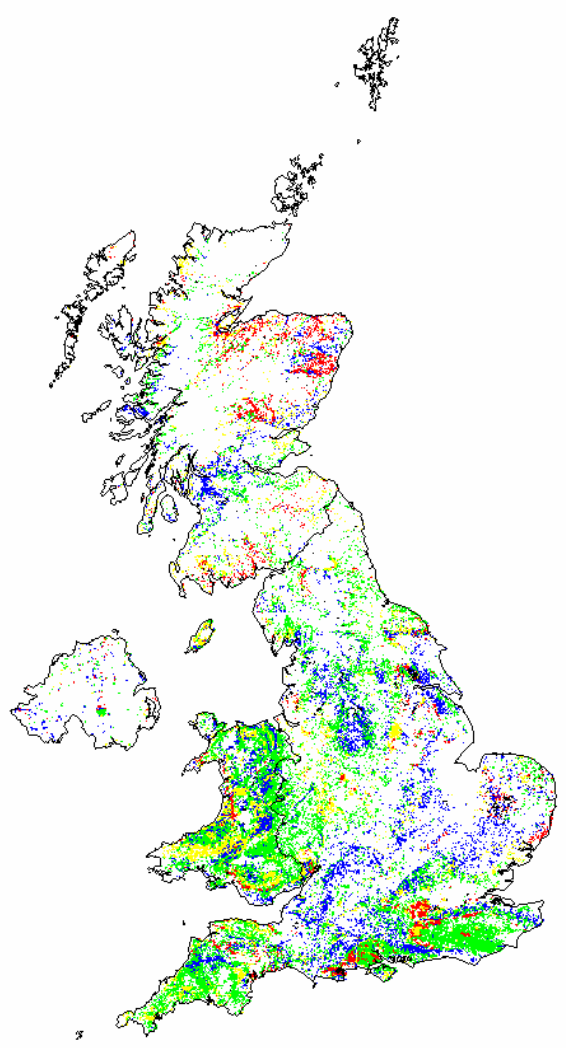
2001: Coniferous woodland ecosystem

2003: Coniferous woodland broad habitat
(managed areas only)



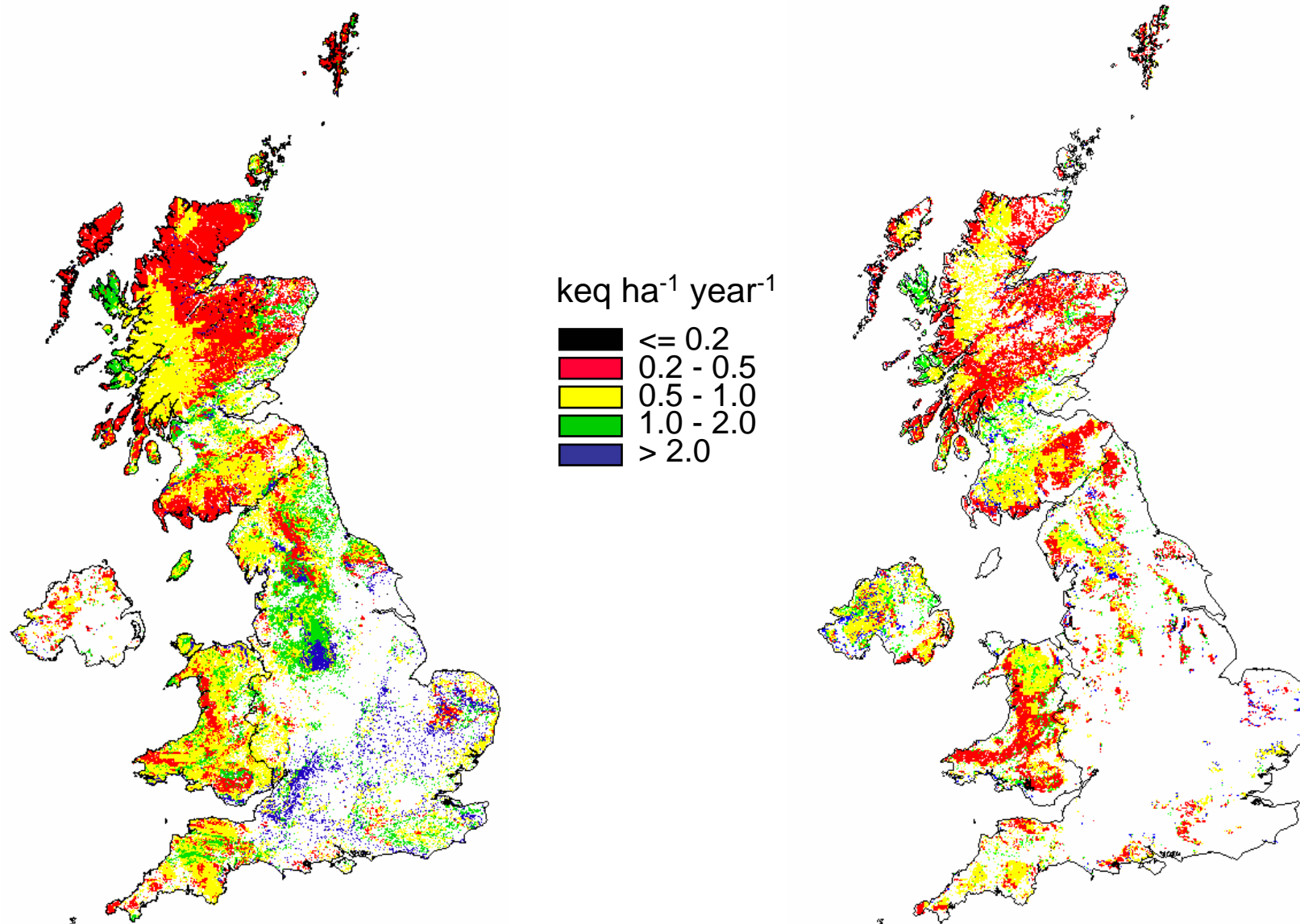
2001: Deciduous woodland ecosystem

2003: Broadleaved, mixed & yew woodland broad habitat (managed broadleaved woodland only)



Maximum critical load of sulphur ($CL_{max}S$)

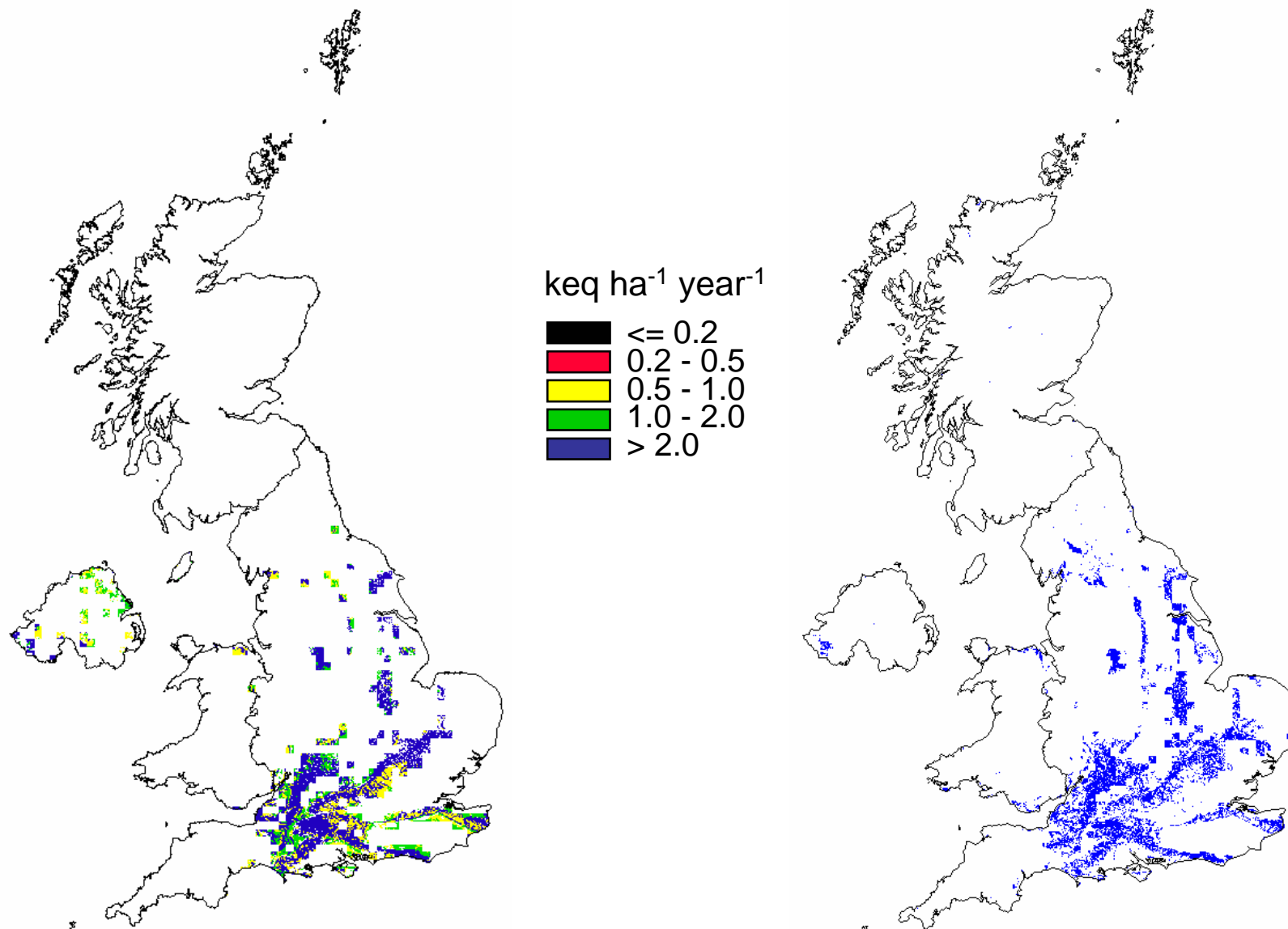
2001: Acid grassland ecosystem

2003: Acid grassland broad habitat
(wet & dry acid grassland)

Maximum critical load of sulphur ($CL_{max}S$)

2001: Calcareous grassland ecosystem

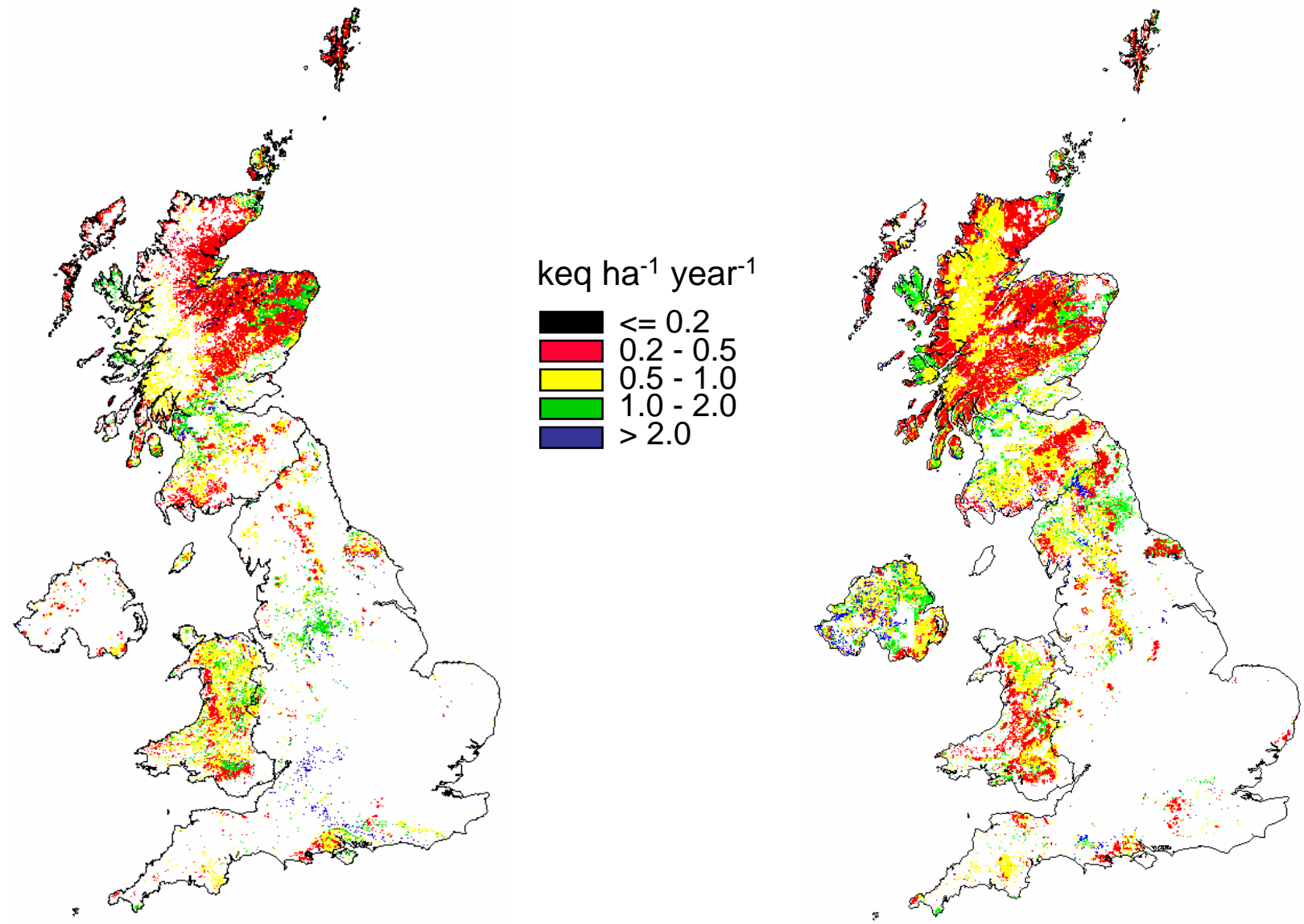
2003: Calcareous grassland broad habitat



Maximum critical load of sulphur ($CL_{max}S$)

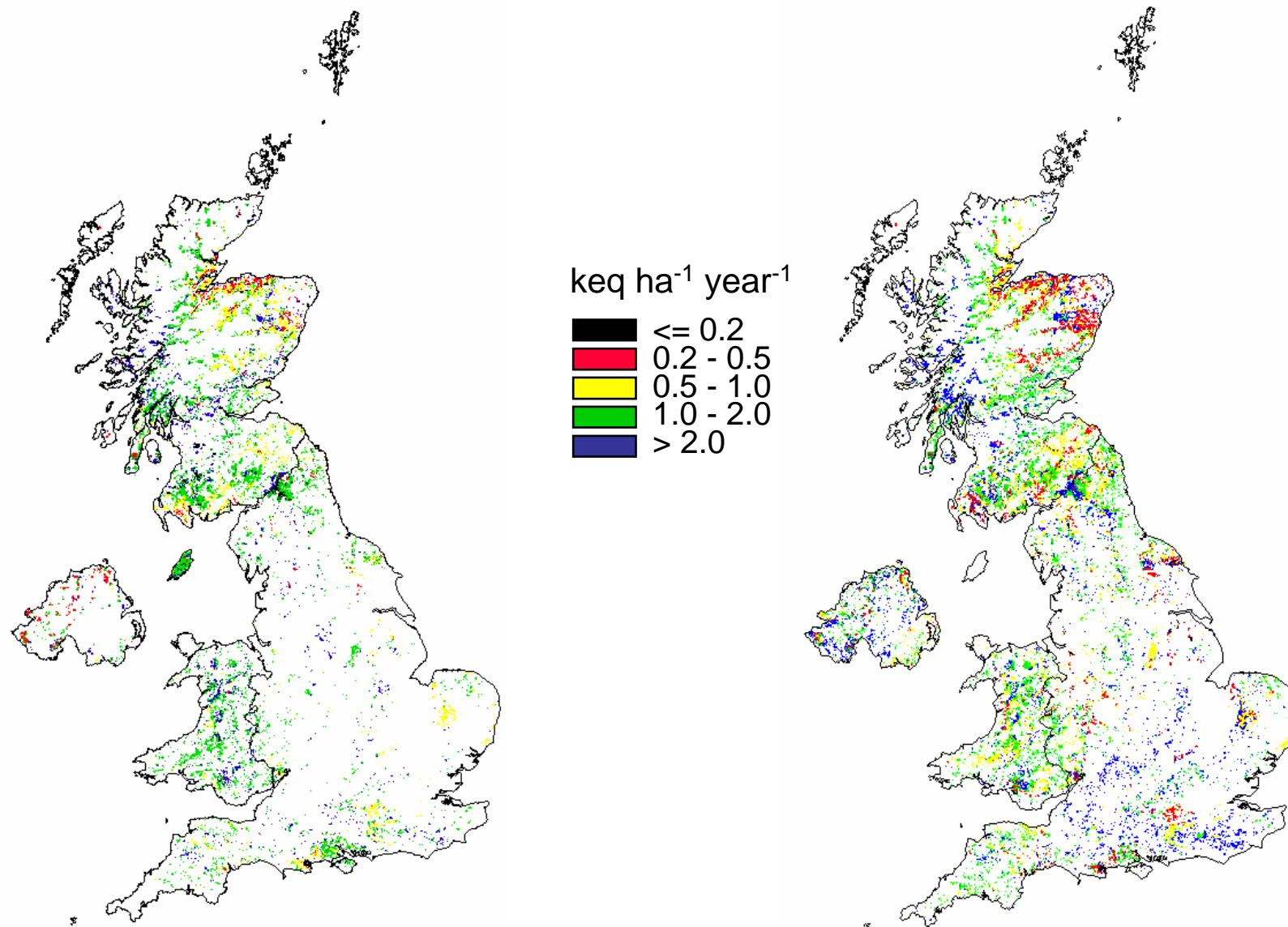
2001: Heathland ecosystem

2003: Dwarf shrub heath broad habitat
(wet & dry dwarf shrub heath)



Maximum critical load of sulphur ($CL_{max}S$)

2001: Coniferous woodland ecosystem

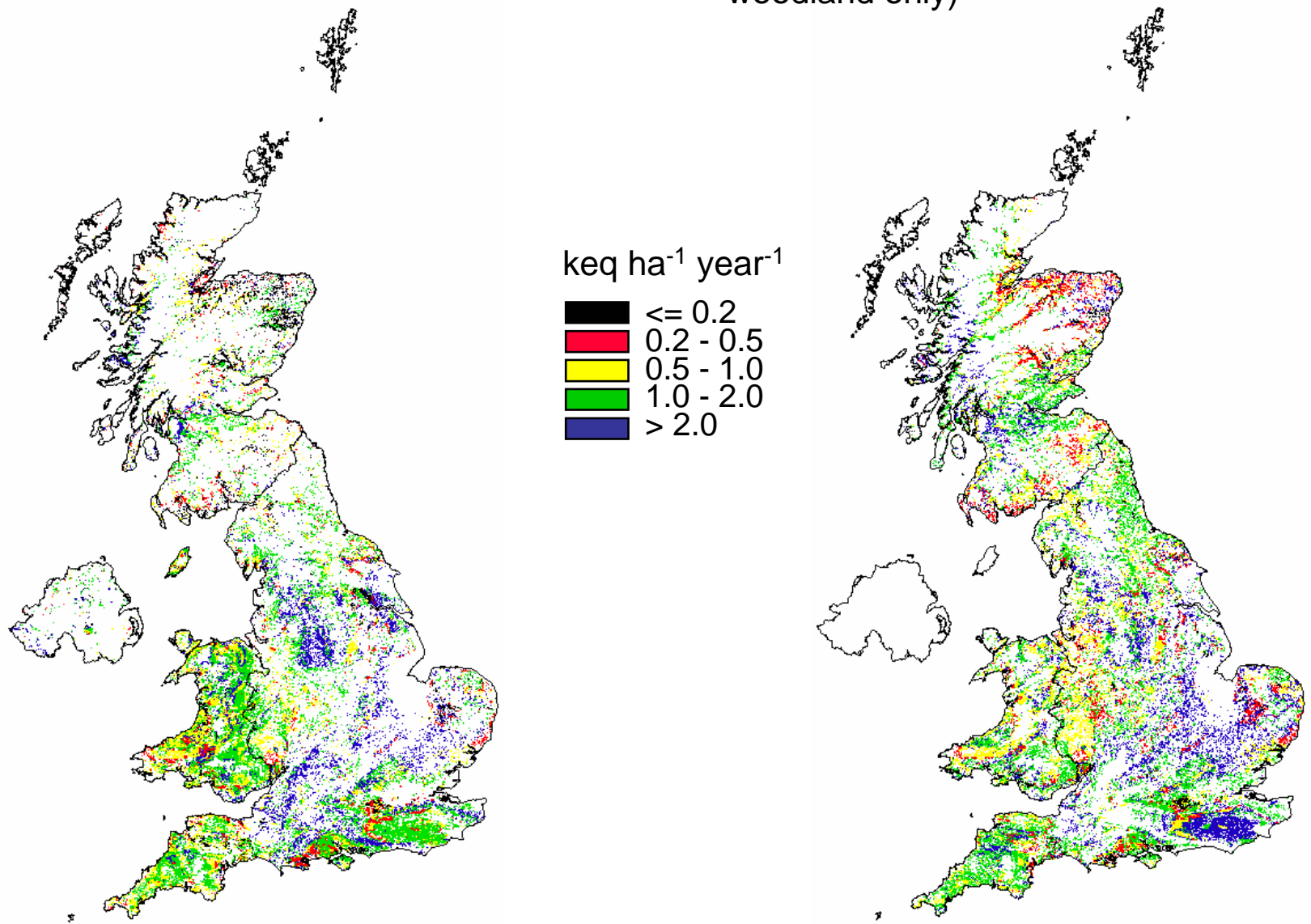
2003: Coniferous woodland broad habitat
(managed areas only)

Maximum critical load of sulphur ($CL_{max}S$)

Figure 8.16

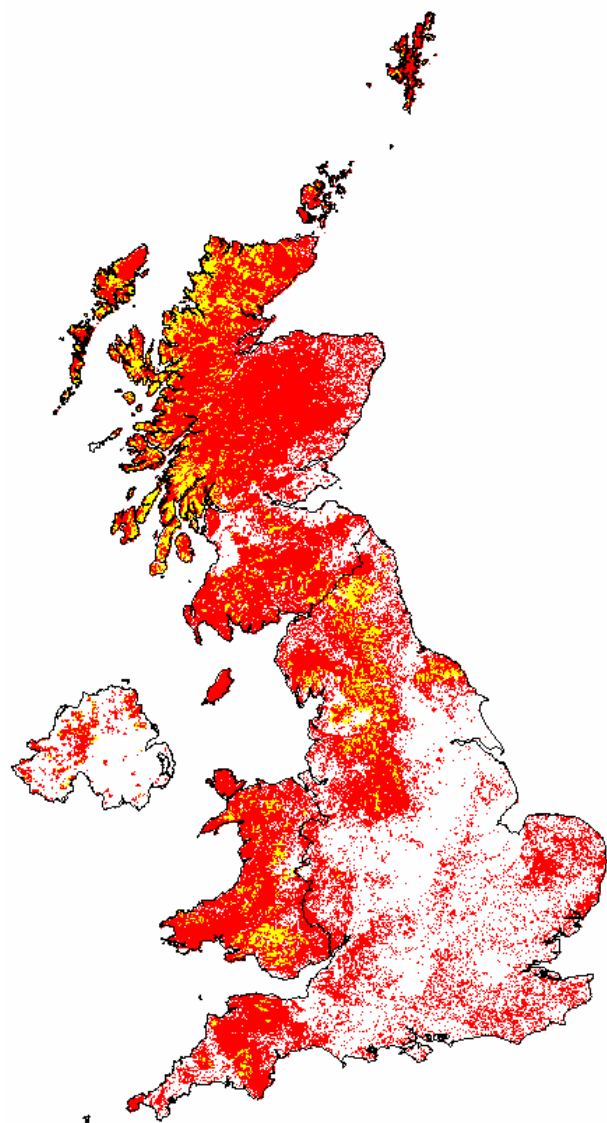
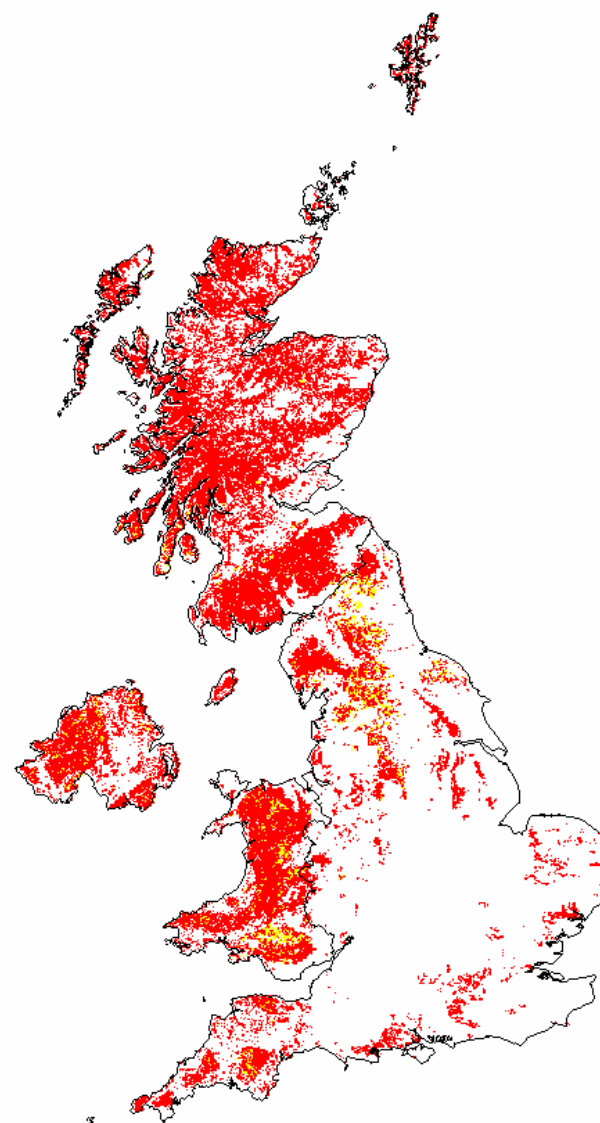
2001: Deciduous woodland ecosystem

2003: Broadleaved, mixed & yew woodland broad habitat (managed broadleaved woodland only)



Minimum critical load of nitrogen ($CL_{\min}N$)

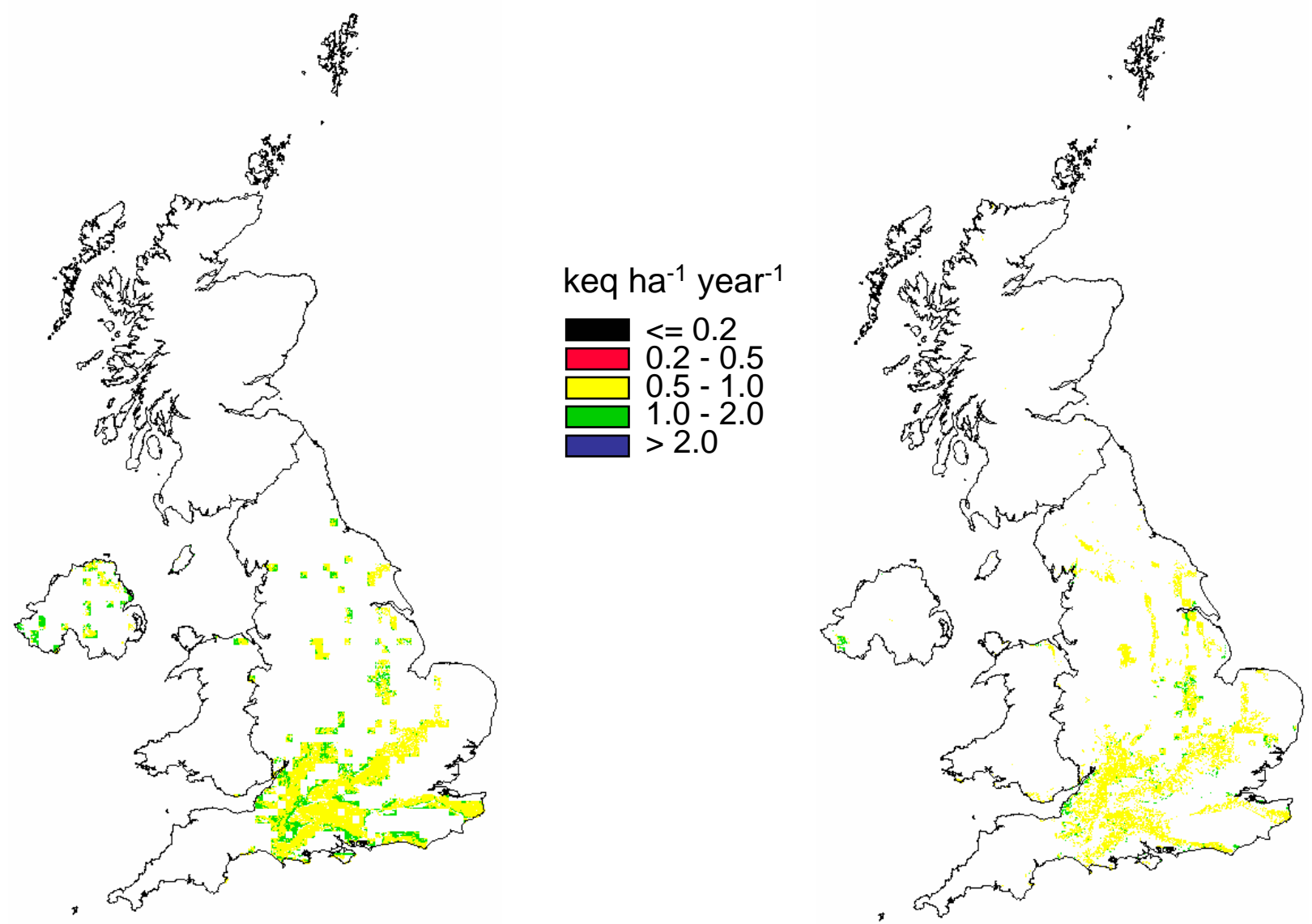
2001: Acid grassland ecosystem

2003: Acid grassland broad habitat
(wet & dry acid grassland)keq ha⁻¹ year⁻¹

Minimum critical load of nitrogen ($CL_{min}N$)

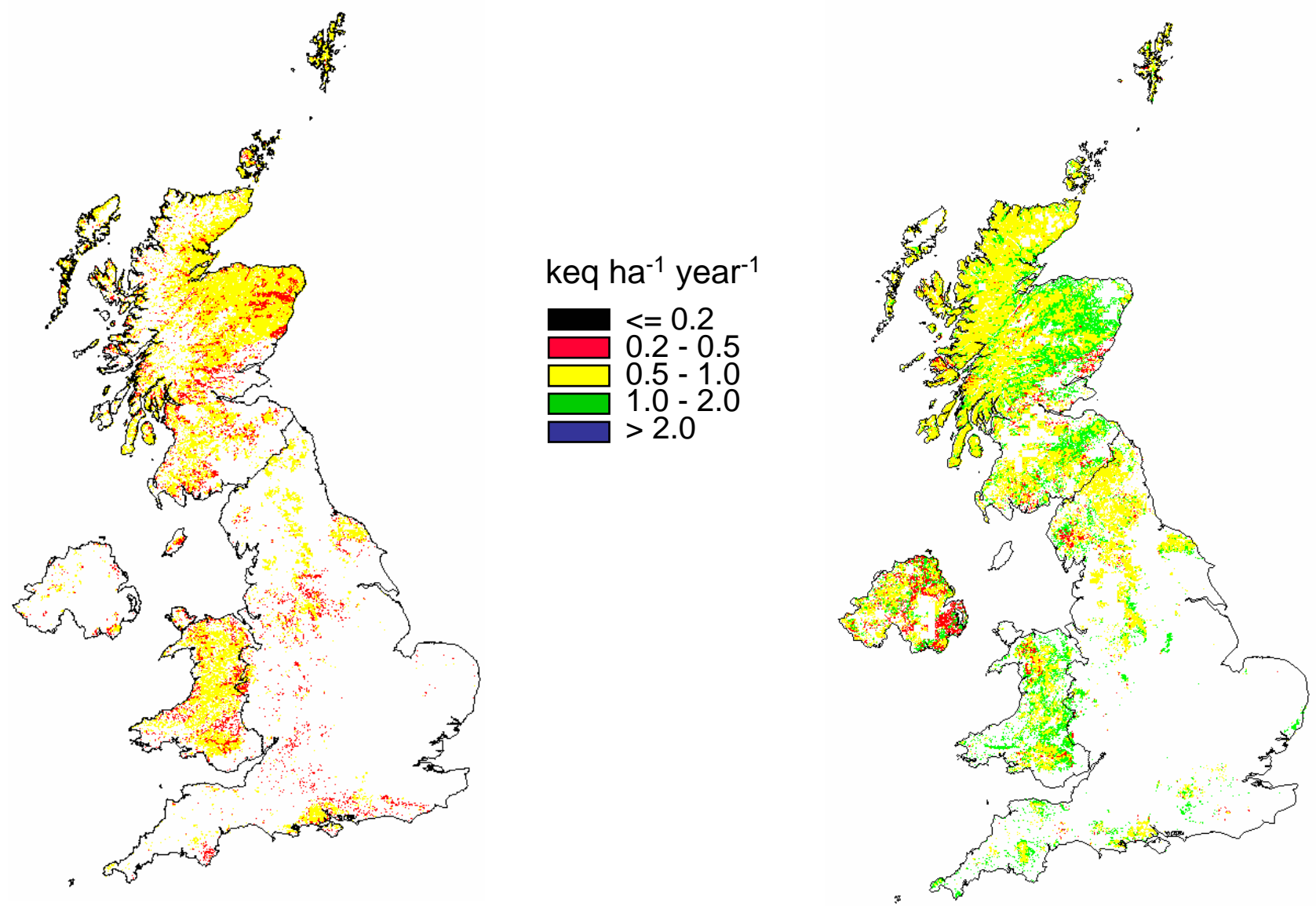
2001: Calcareous grassland ecosystem

2003: Calcareous grassland broad habitat



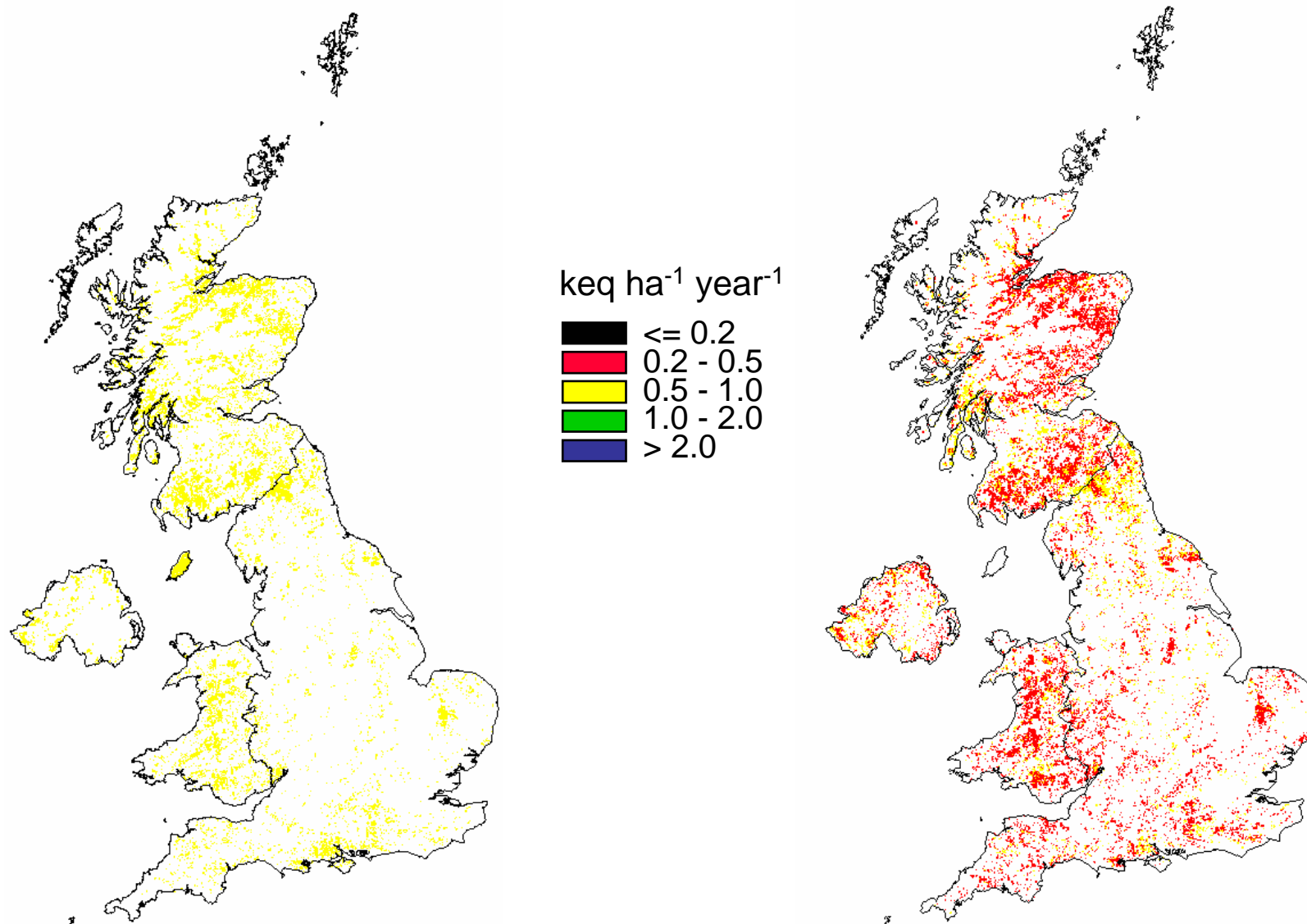
2001: Heathland ecosystem

2003: Dwarf shrub heath broad habitat
(wet & dry dwarf shrub heath)



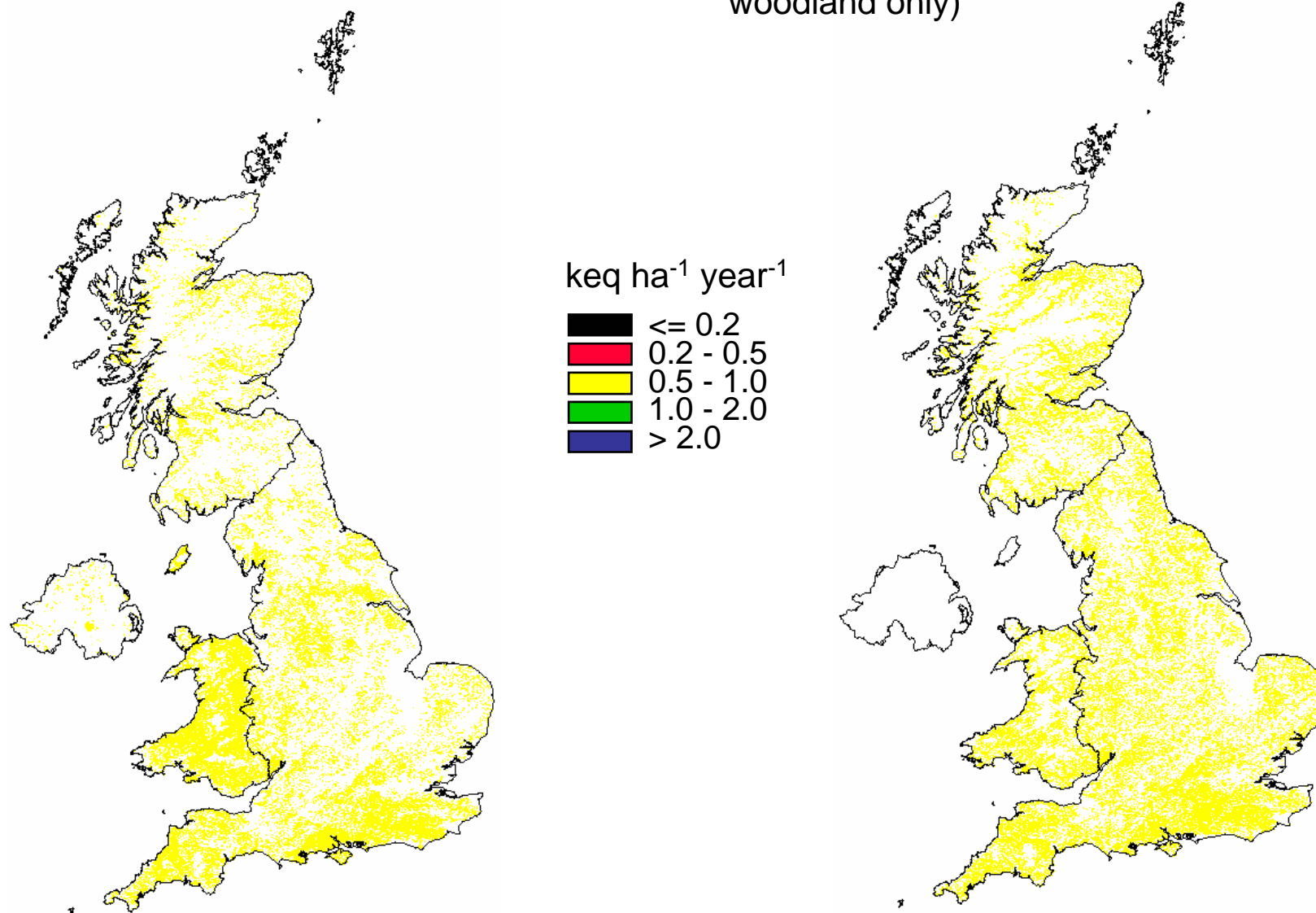
Minimum critical load of nitrogen ($CL_{\min}N$)

2001: Coniferous woodland ecosystem

2003: Coniferous woodland broad habitat
(managed areas only)

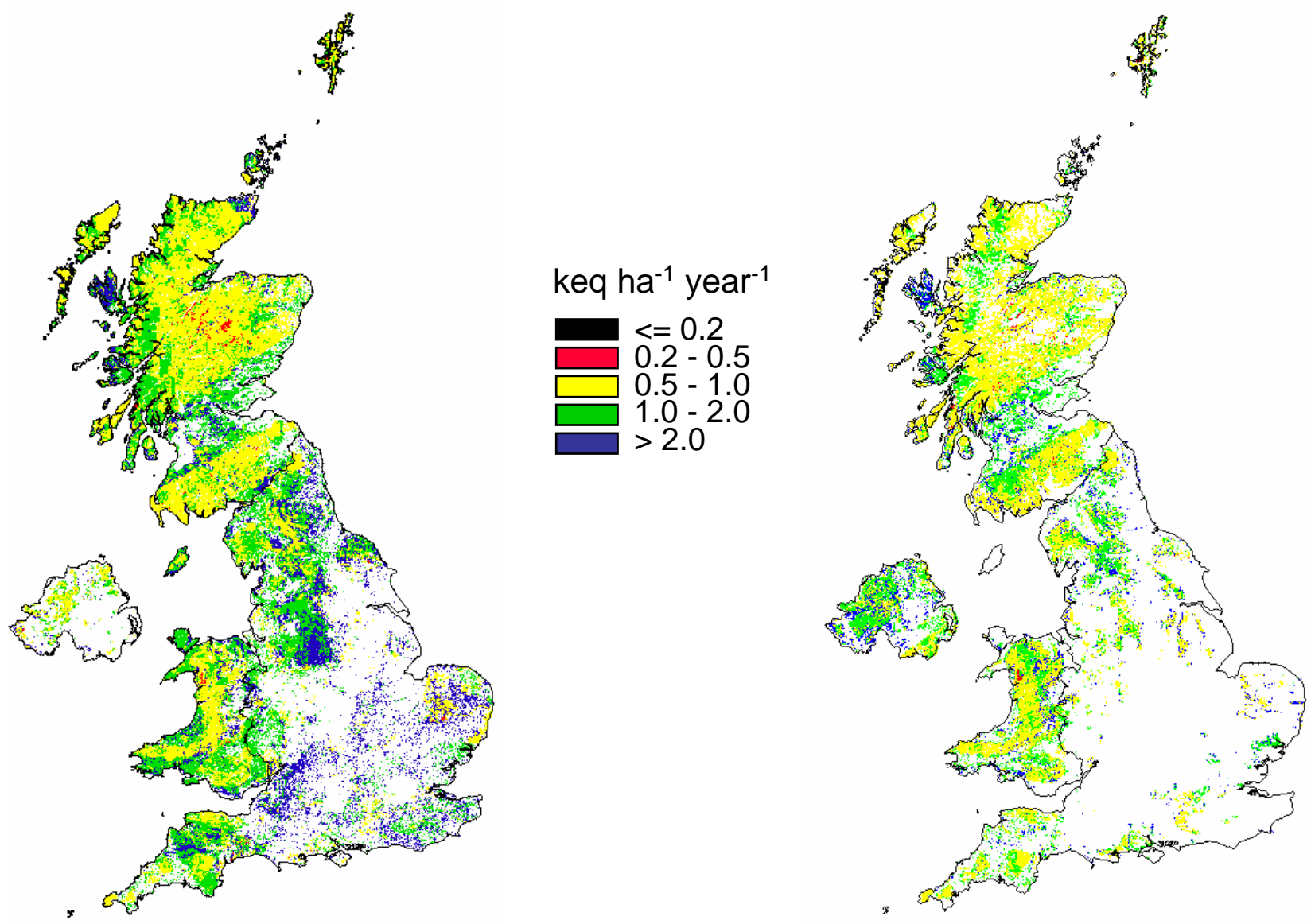
Minimum critical load of nitrogen ($CL_{\min}N$)

2001: Deciduous woodland ecosystem

2003: Broadleaved, mixed & yew woodland
broad habitat (managed broadleaved
woodland only)

2001: Acid grassland ecosystem

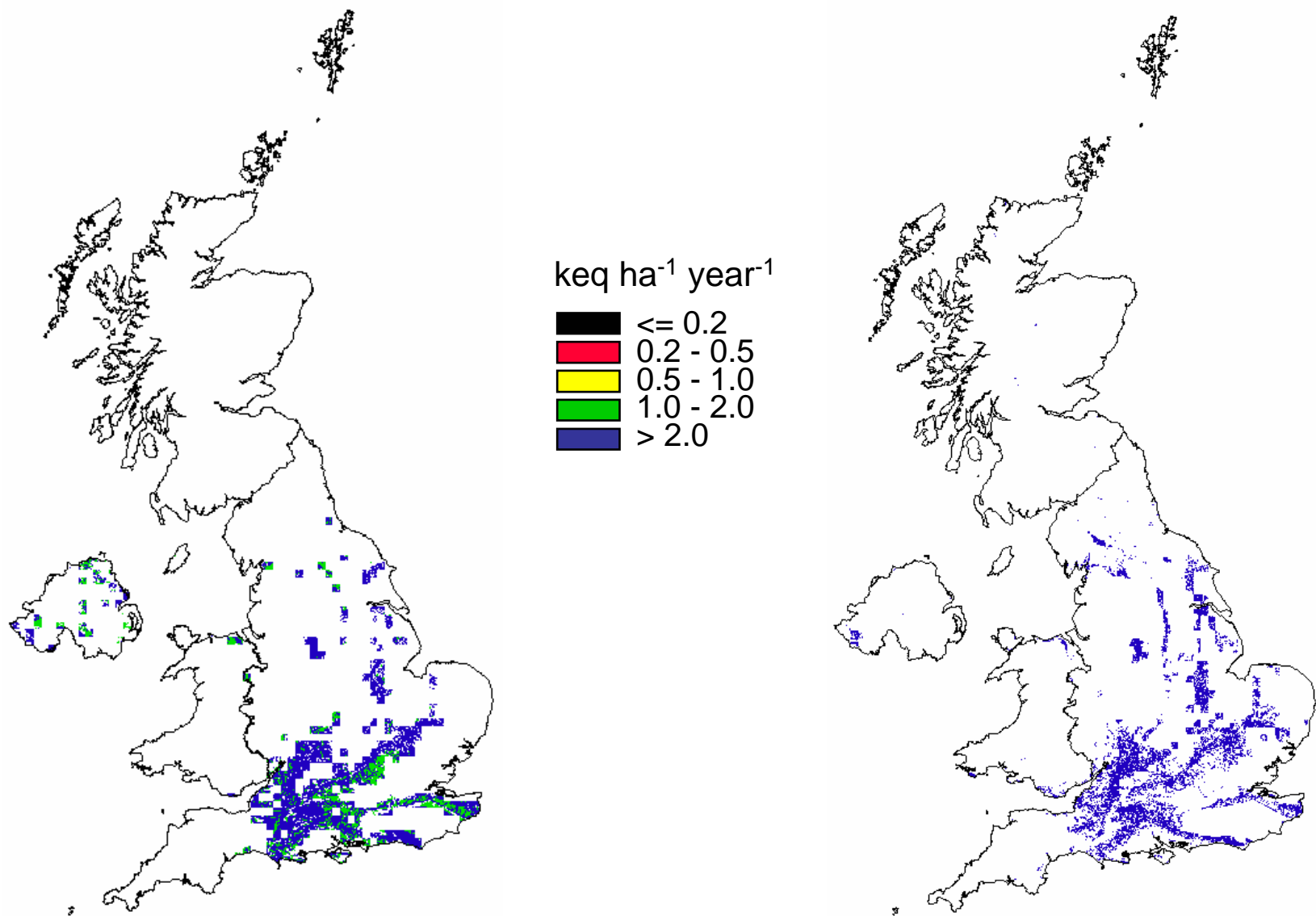
2003: Acid grassland broad habitat
(wet & dry acid grassland)



Maximum critical load of nitrogen ($CL_{max}N$)

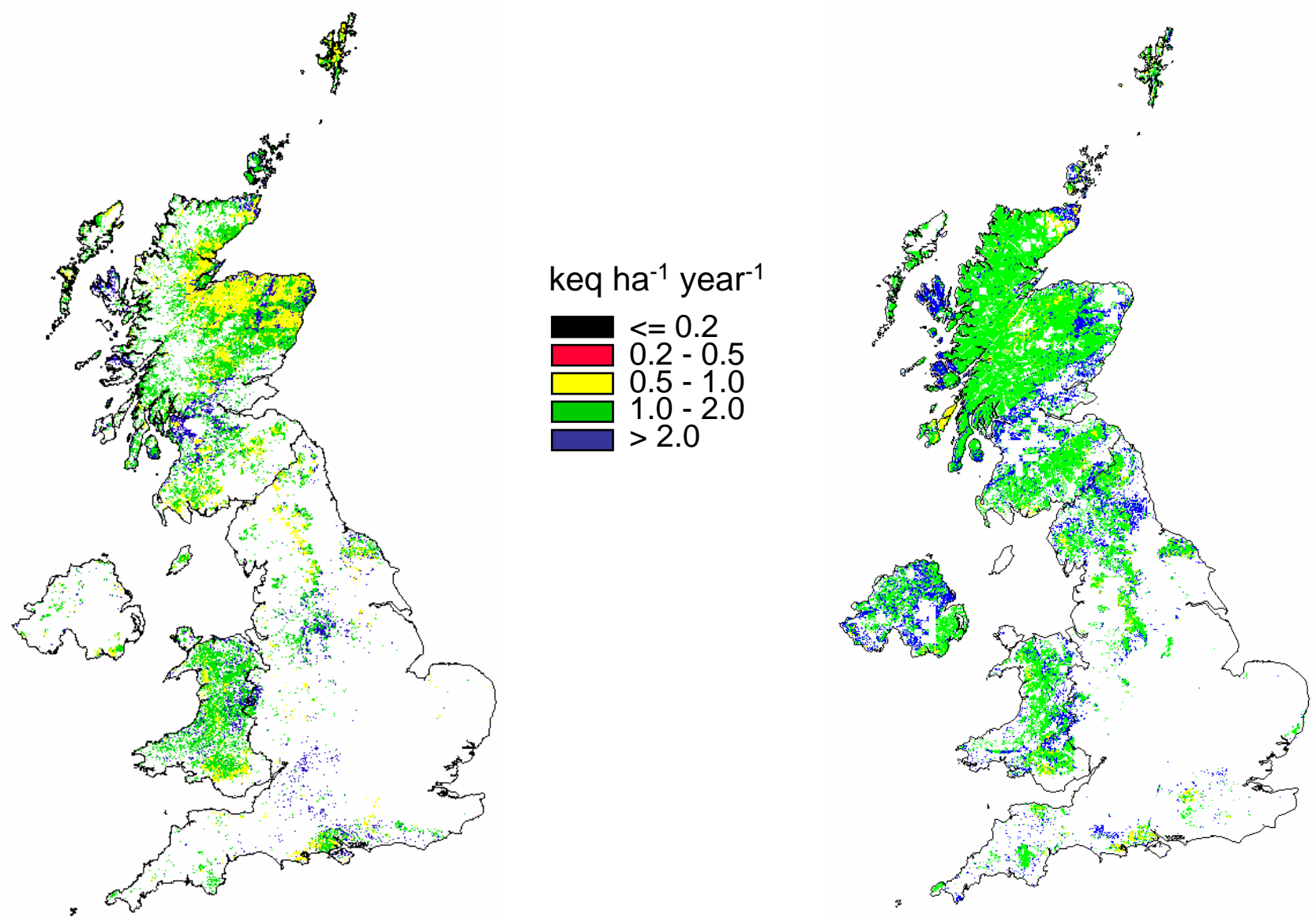
2001: Calcareous grassland ecosystem

2003: Calcareous grassland broad habitat



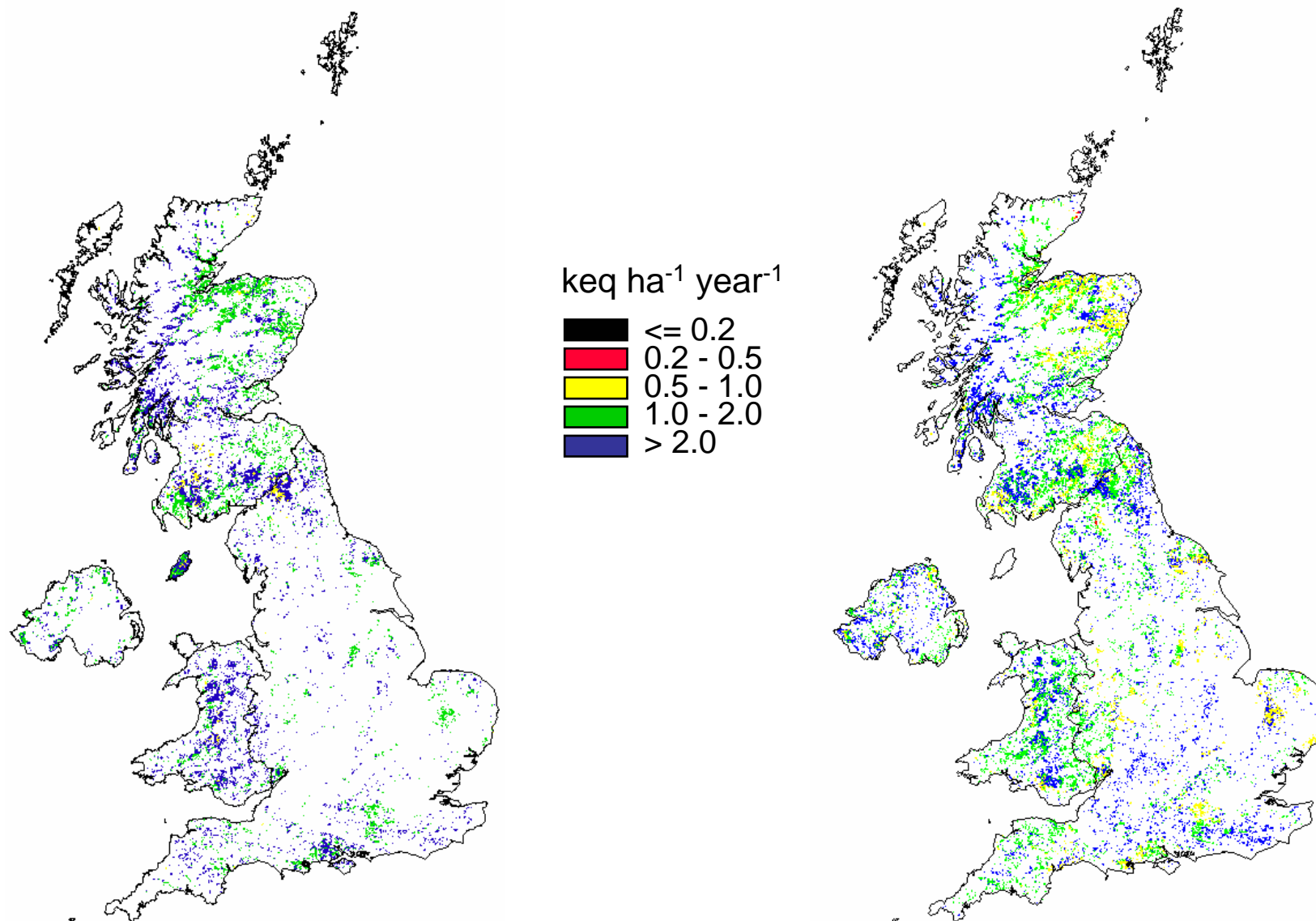
2001: Heathland ecosystem

2003: Dwarf shrub heath broad habitat
(wet & dry dwarf shrub heath)



Maximum critical load of nitrogen ($CL_{\max}N$)

2001: Coniferous woodland ecosystem

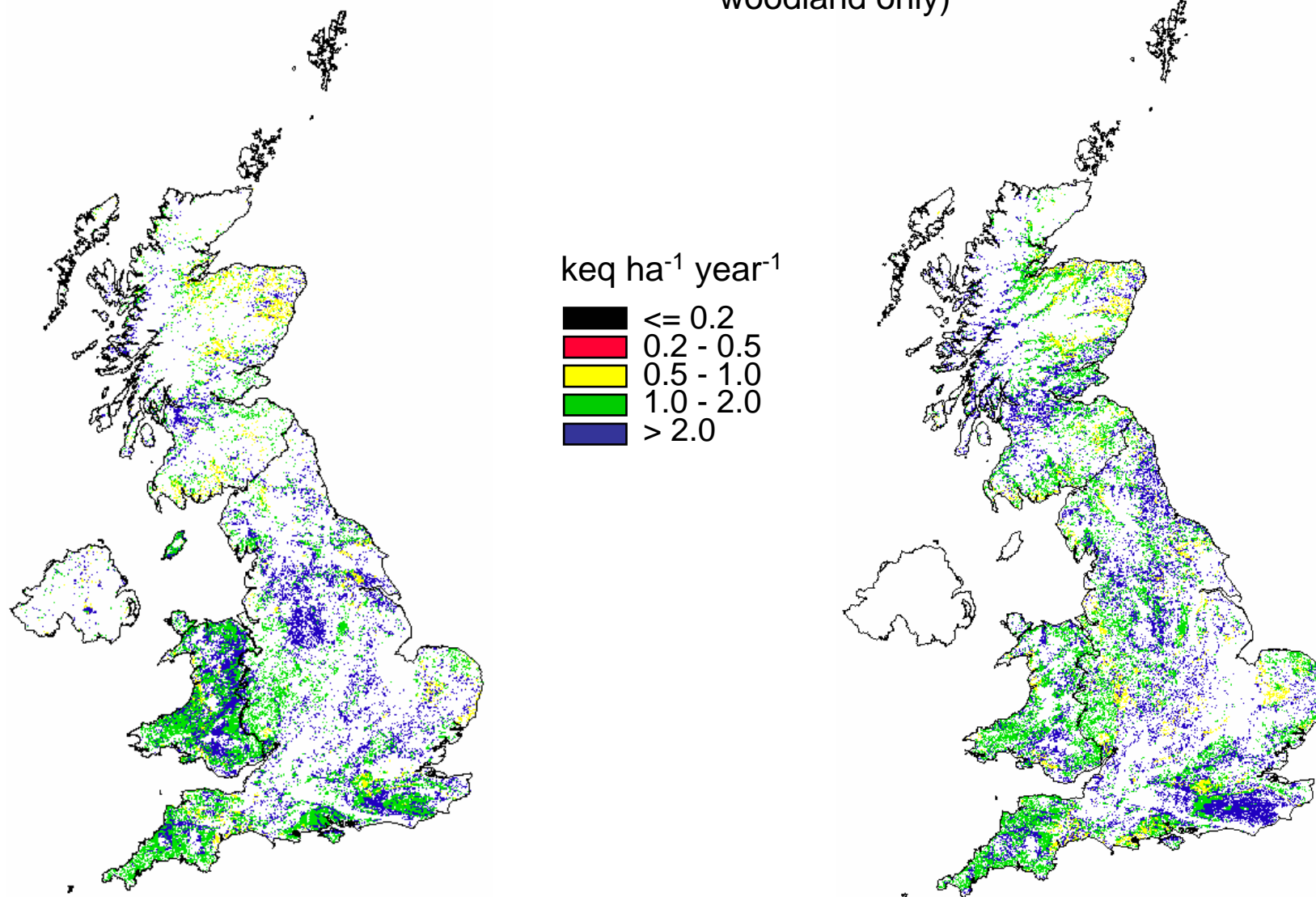
2003: Coniferous woodland broad habitat
(managed areas only)

Maximum critical load of nitrogen (CLmaxN)

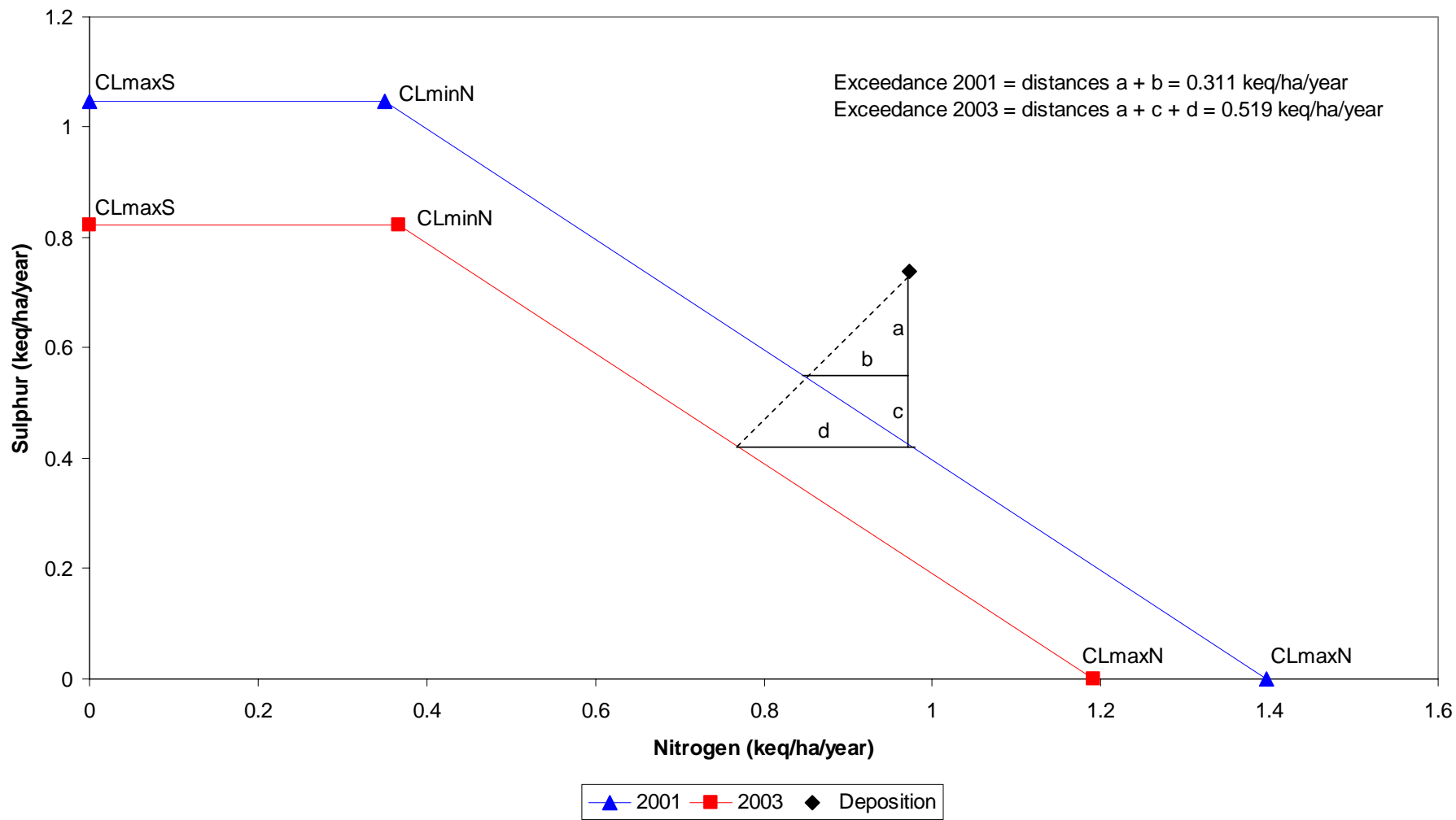
Figure 8.26

2001: Deciduous woodland ecosystem

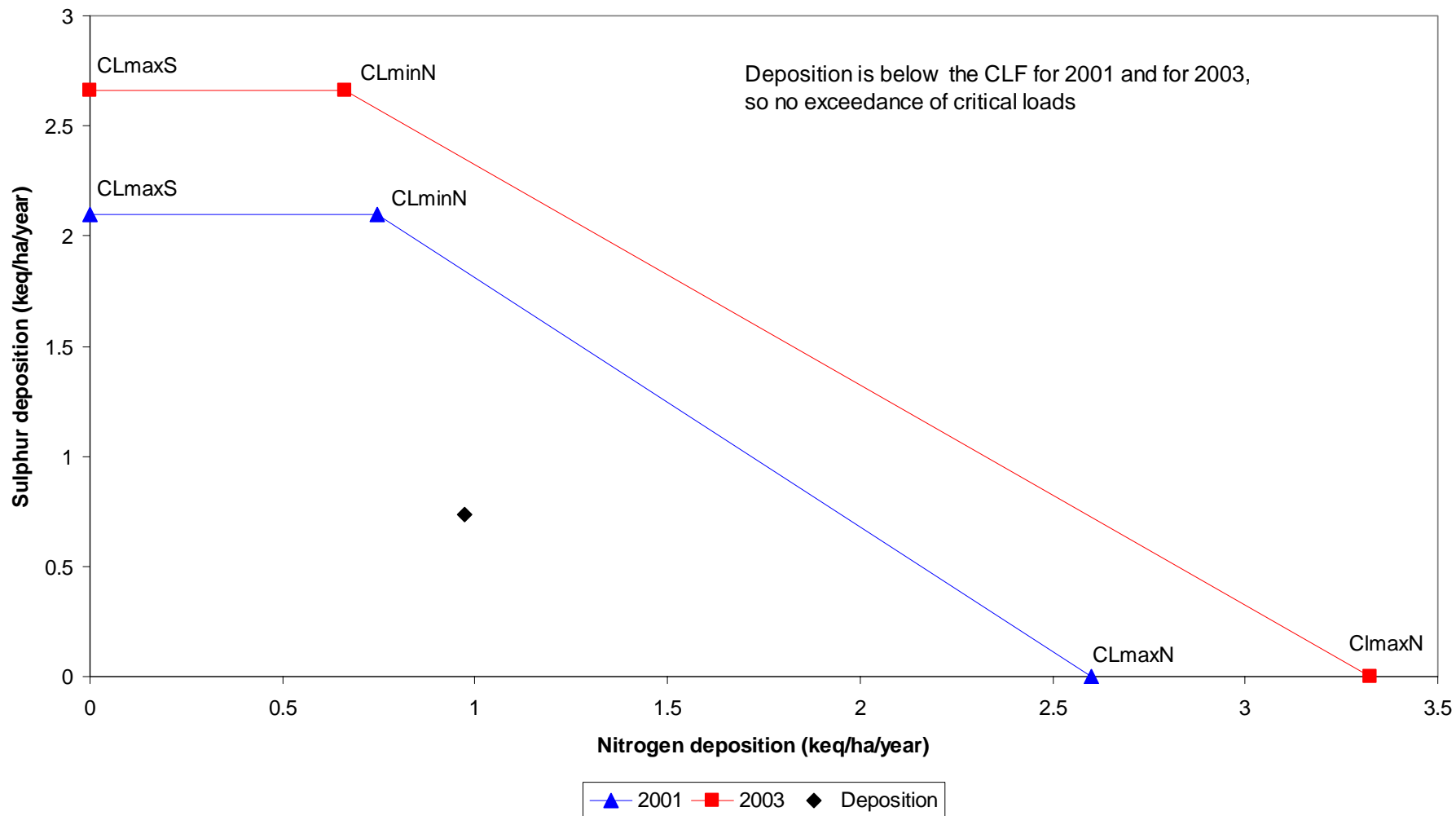
2003: Broadleaved, mixed & yew woodland broad habitat (managed broadleaved woodland only)



CLF for acid grassland



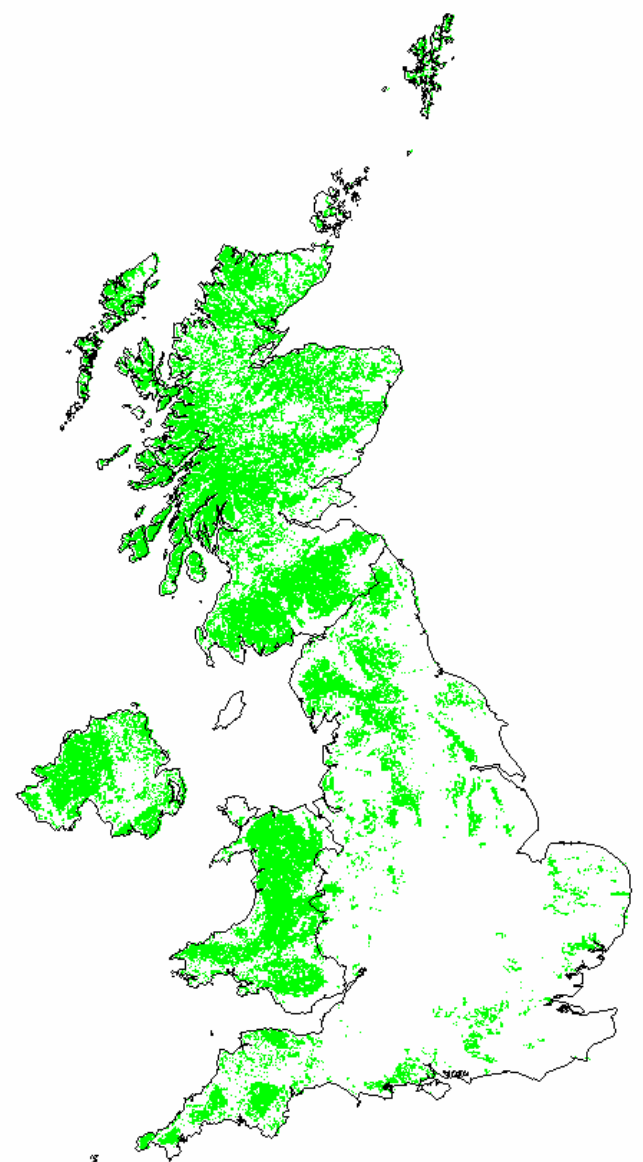
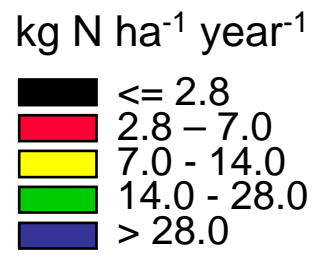
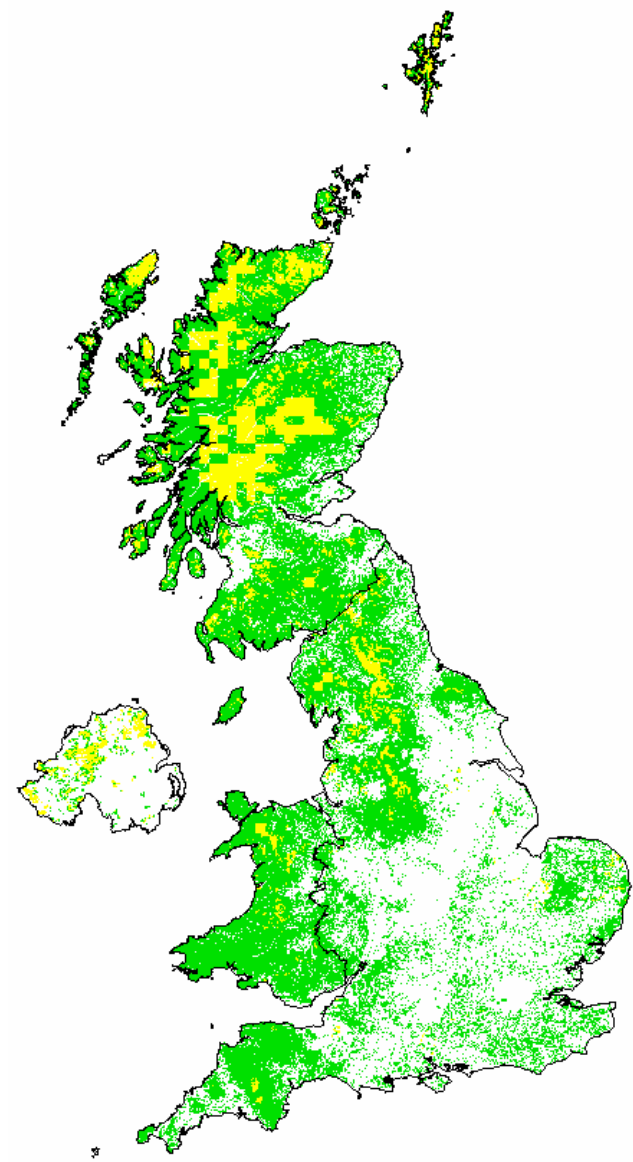
CLF for managed broadleaved woodland



Critical load of nutrient nitrogen ($CL_{nut}N$)

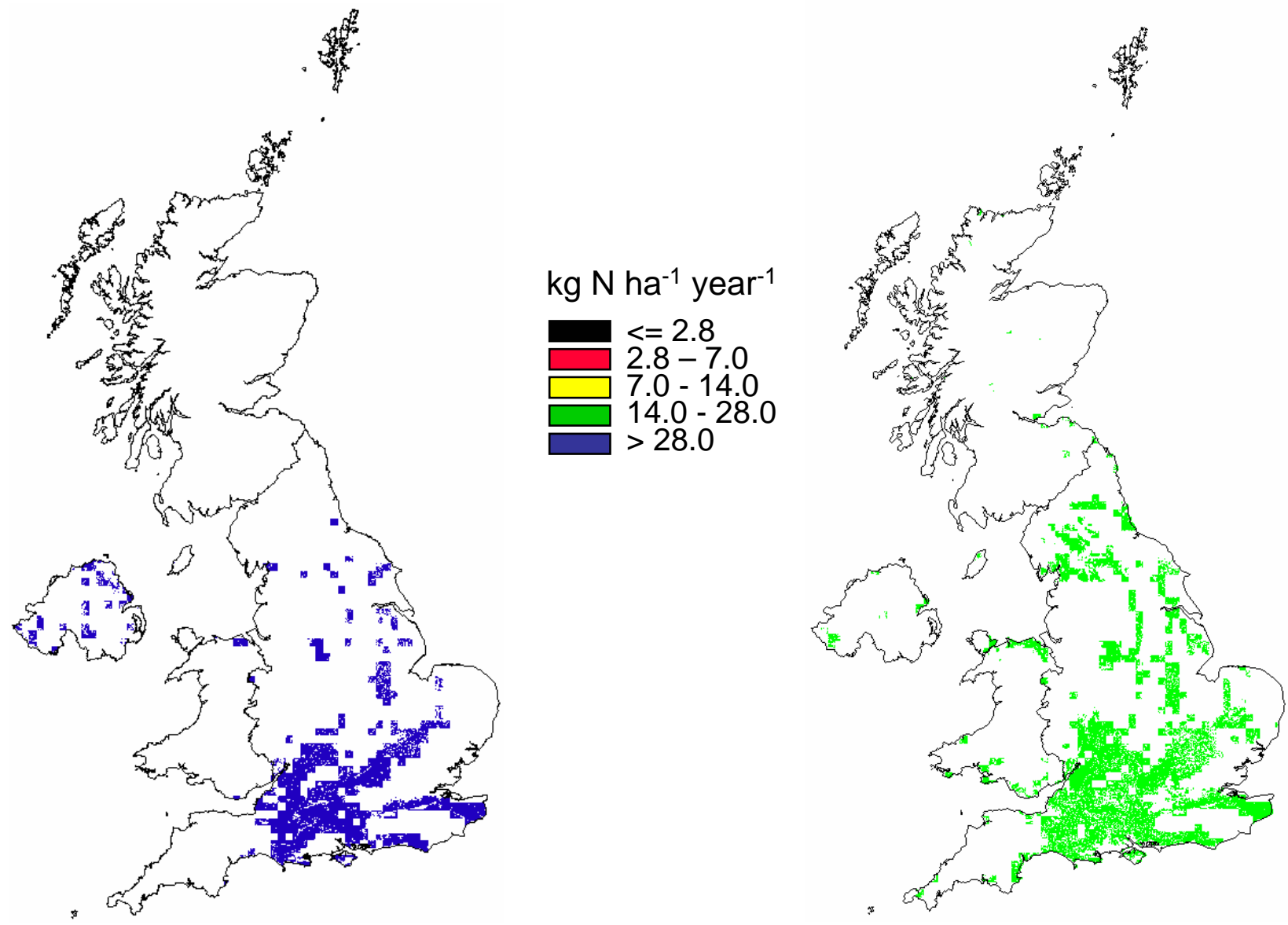
2001: Acid grassland ecosystem

2003: Acid grassland broad habitat
(wet & dry acid grassland)



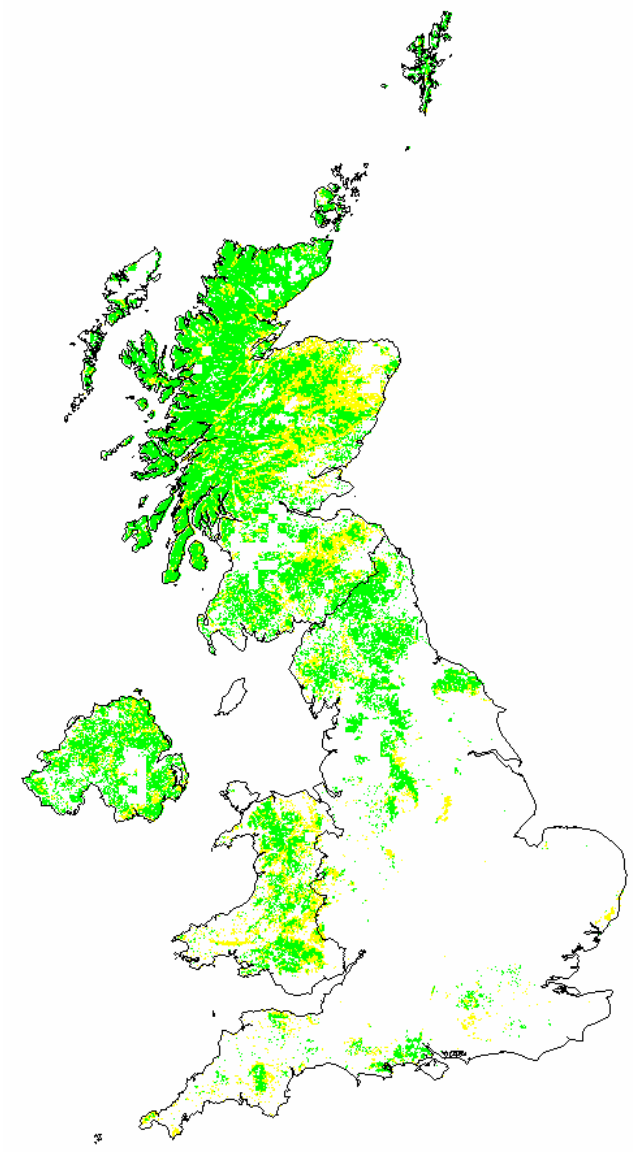
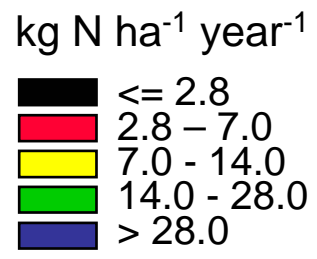
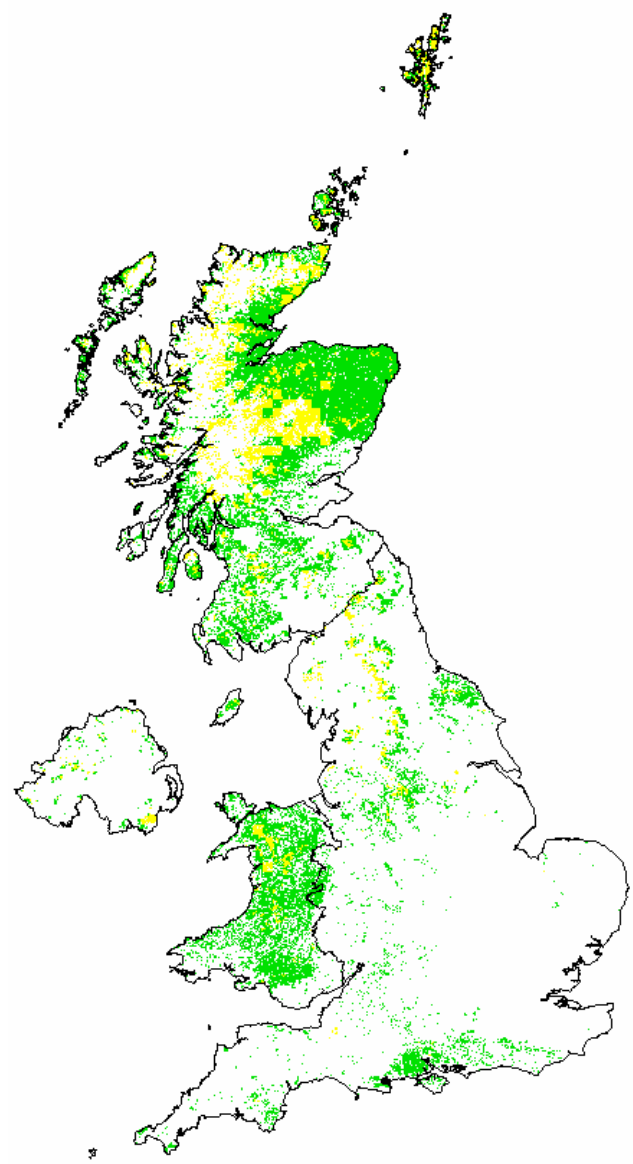
2001: Calcareous grassland ecosystem

2003: Calcareous grassland broad habitat



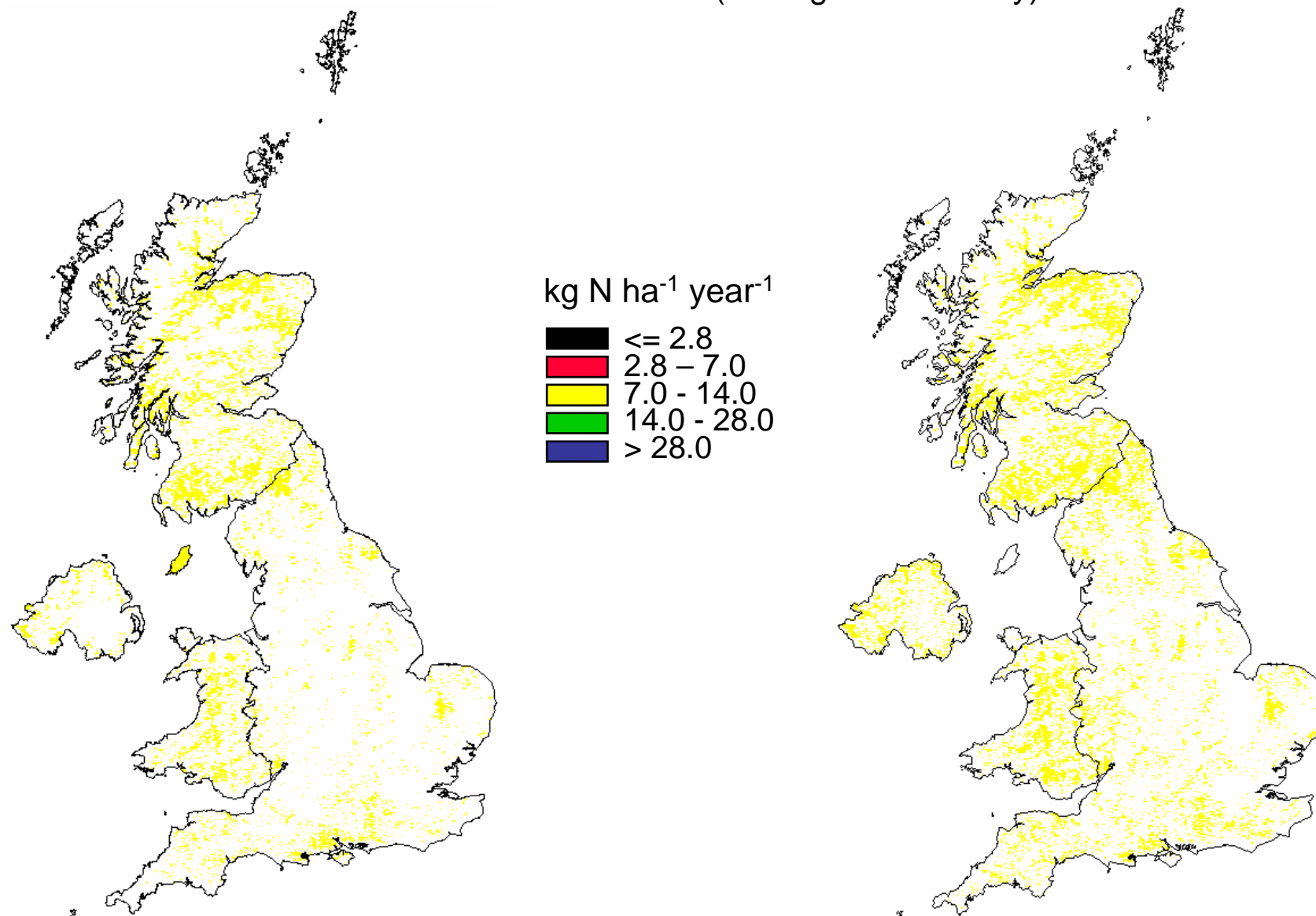
2001: Heathland ecosystem

2003: Dwarf shrub heath broad habitat
(wet & dry dwarf shrub heath)



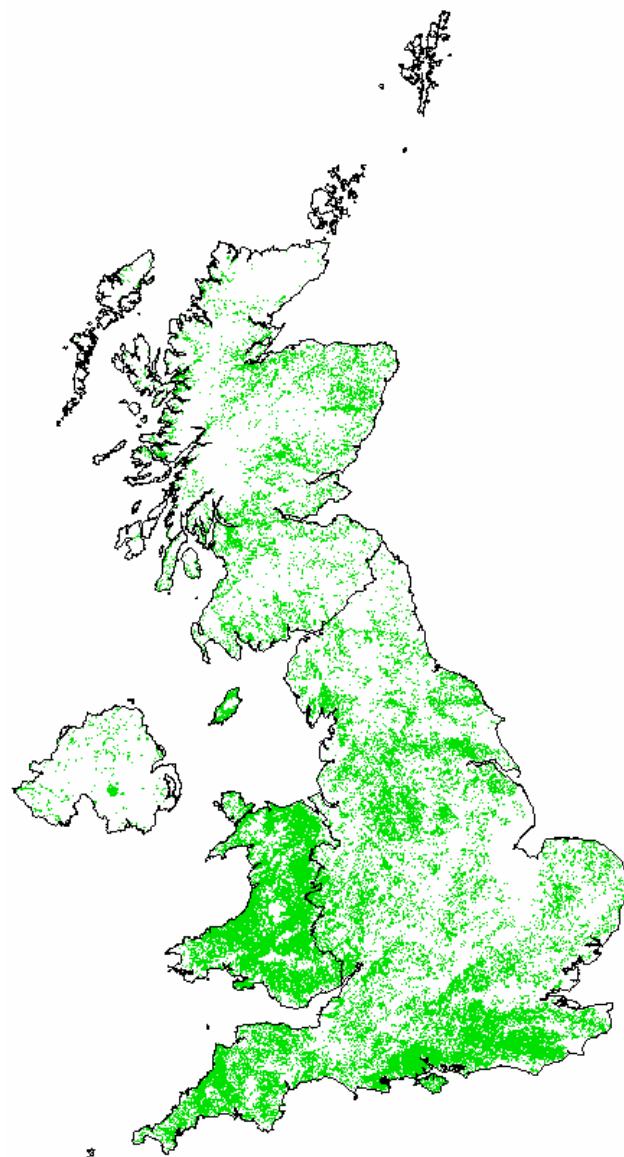
Critical load of nutrient nitrogen ($CL_{nut}N$)

2001: Coniferous woodland ecosystem

2003: Coniferous woodland broad habitat
(managed areas only)

Critical load of nutrient nitrogen ($CL_{nut}N$)

2001: Deciduous woodland ecosystem

2003: Broadleaved, mixed & yew woodland
broad habitat (managed broadleaved
woodland only)kg N ha⁻¹ year⁻¹