

This page left blank.

Figure 3.1. Comparison of trends in annual mean sulphate particle concentrations

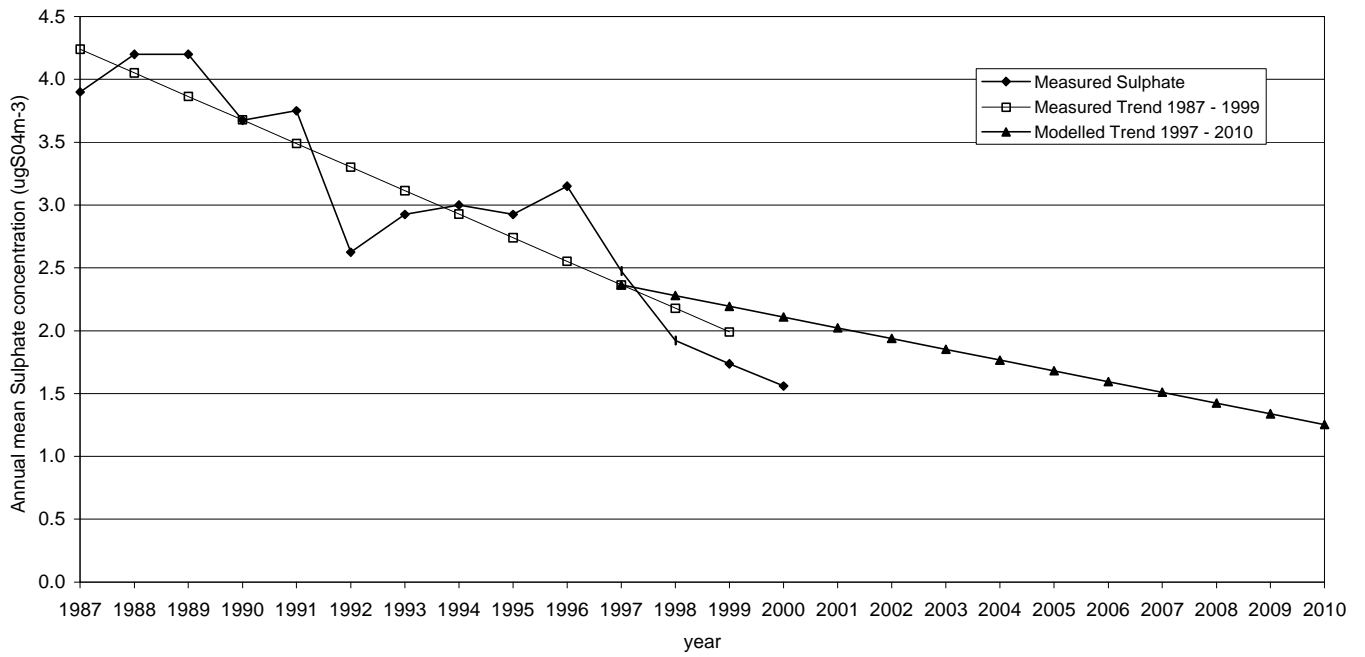


Figure 3.2. Comparison of trends in annual mean nitrate particle concentrations

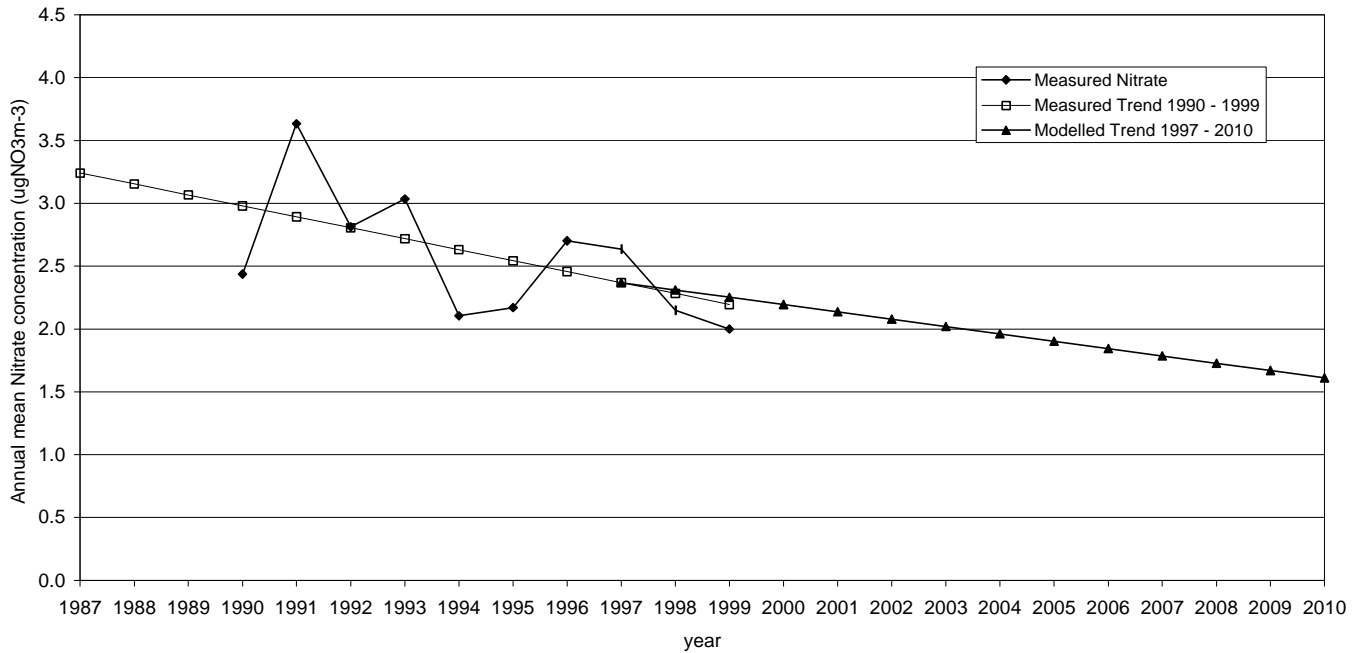


Figure 5.1 Site-specific projections of annual mean PM10 concentrations at London Bloomsbury

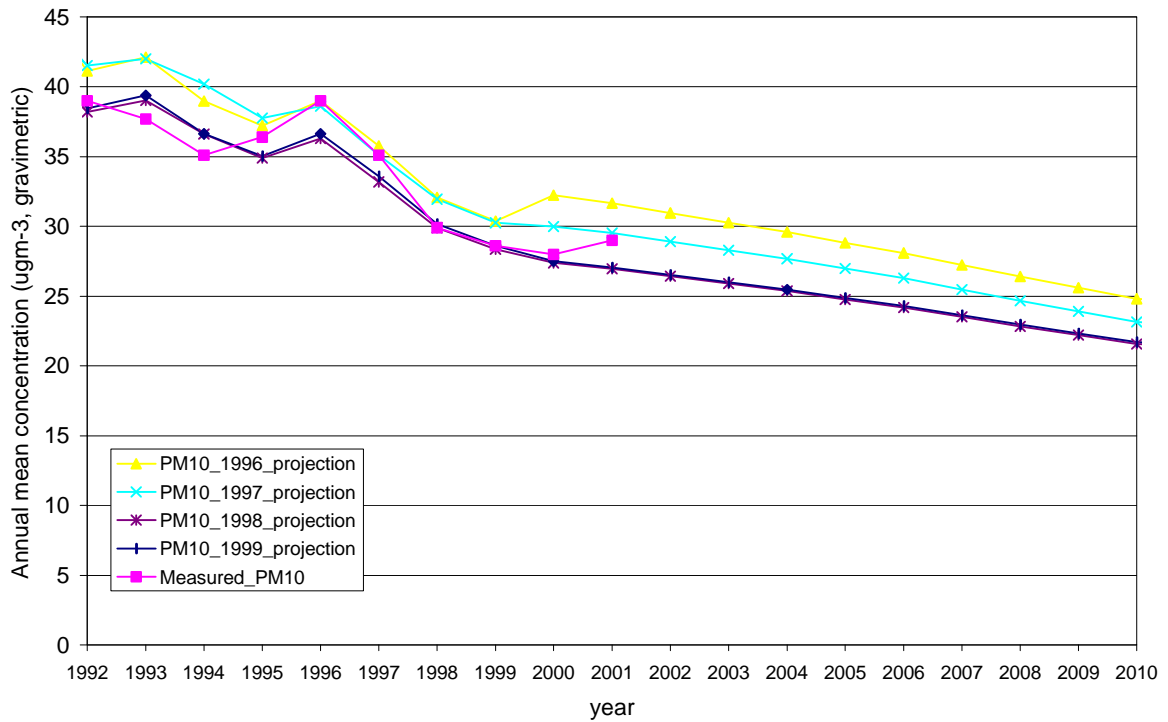


Figure 5.2 Site-specific projections of annual mean PM10 concentrations at Belfast Centre

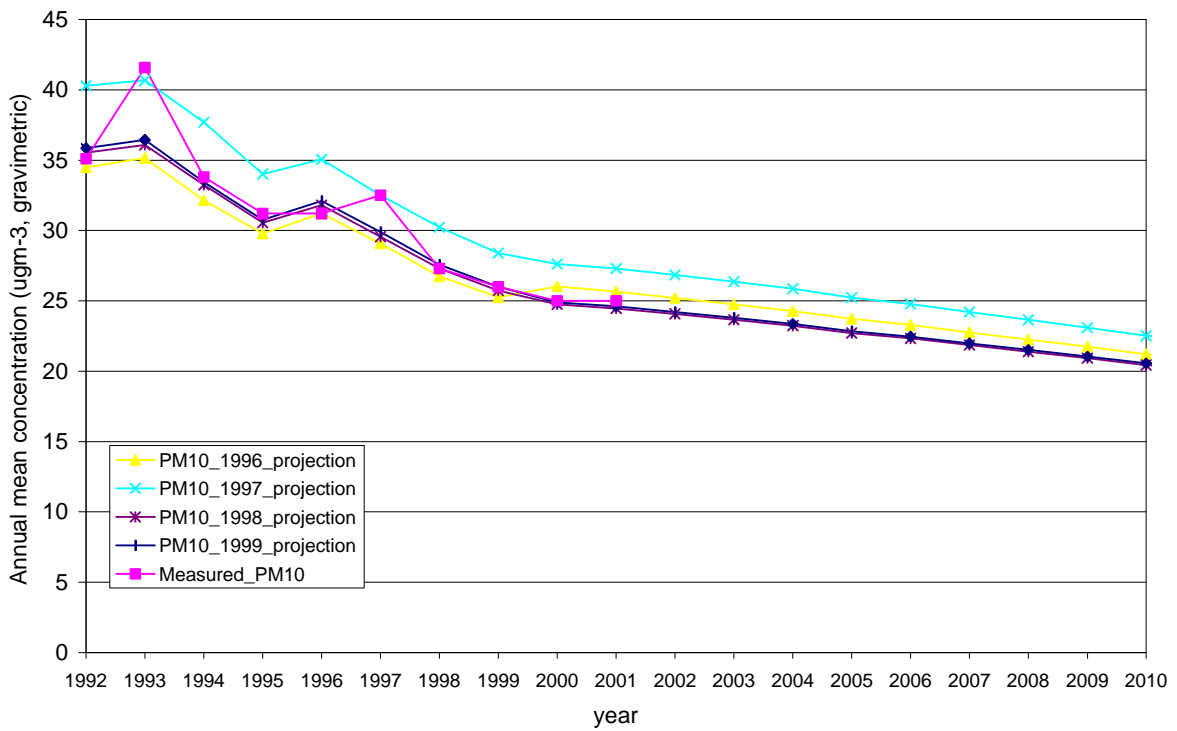


Figure 5.3 Site-specific projections of annual mean PM10 concentrations at Bury Roadside

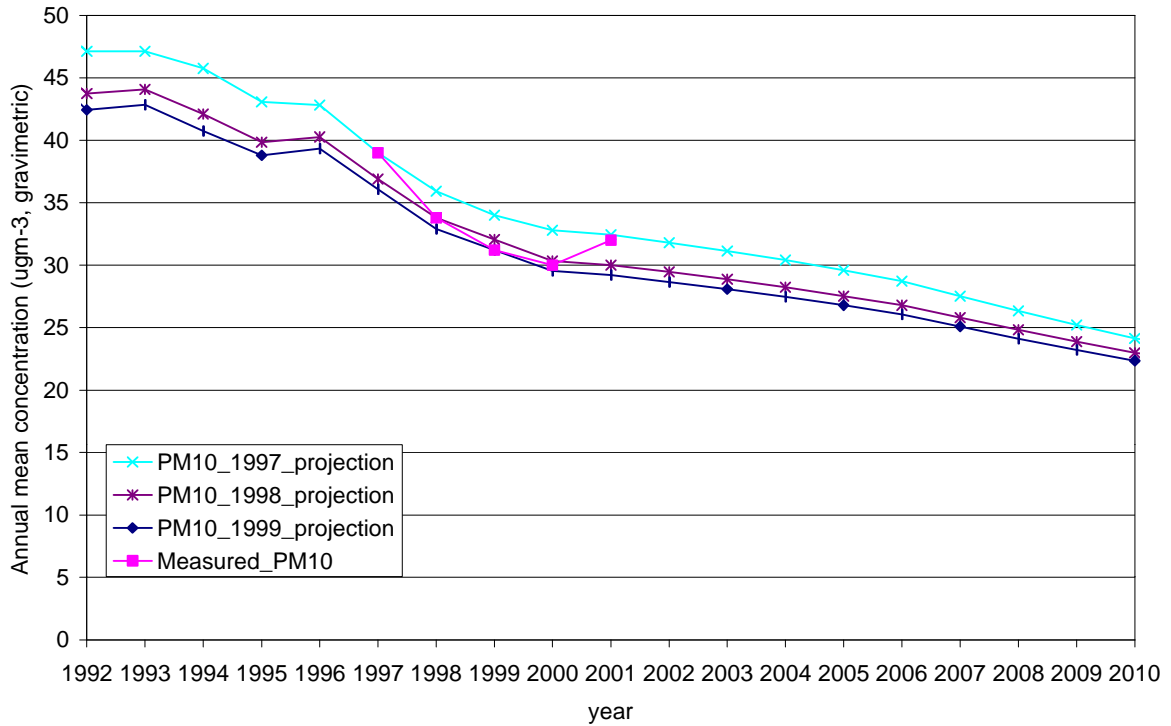


Figure 5.4 Site-specific projections of annual mean PM10 concentrations at Sutton Roadside

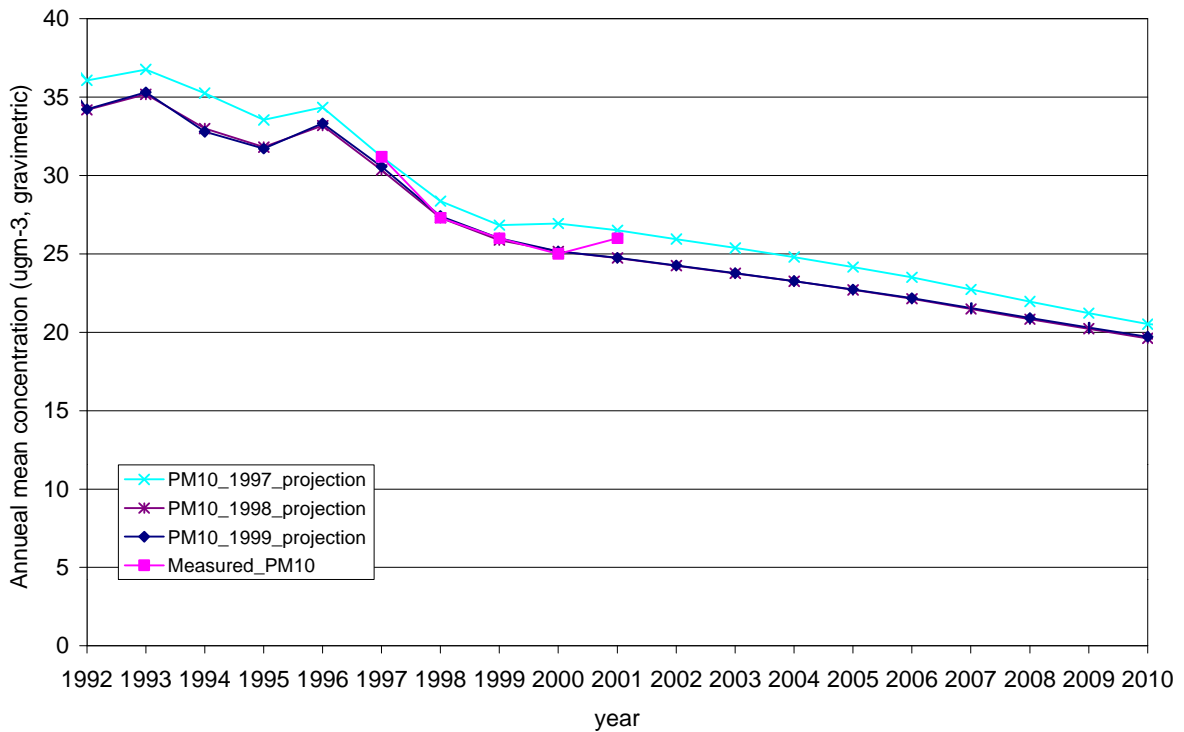


Figure 5.5 The relationship between the number of days with PM10 concentrations greater than or equal to 50 $\mu\text{g}/\text{m}^3$ and annual mean (National network TEOM data 1992-1999)

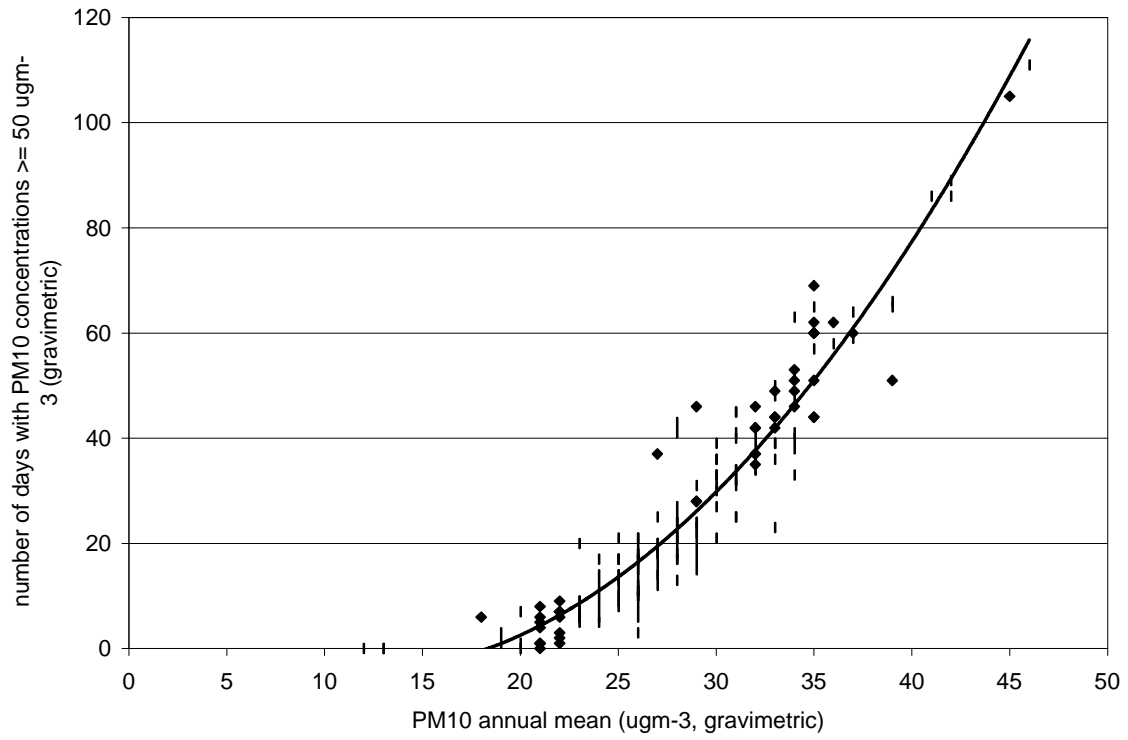


Figure 6.1 The relationship between ambient PM10 concentrations and the weighted sum of local emissions

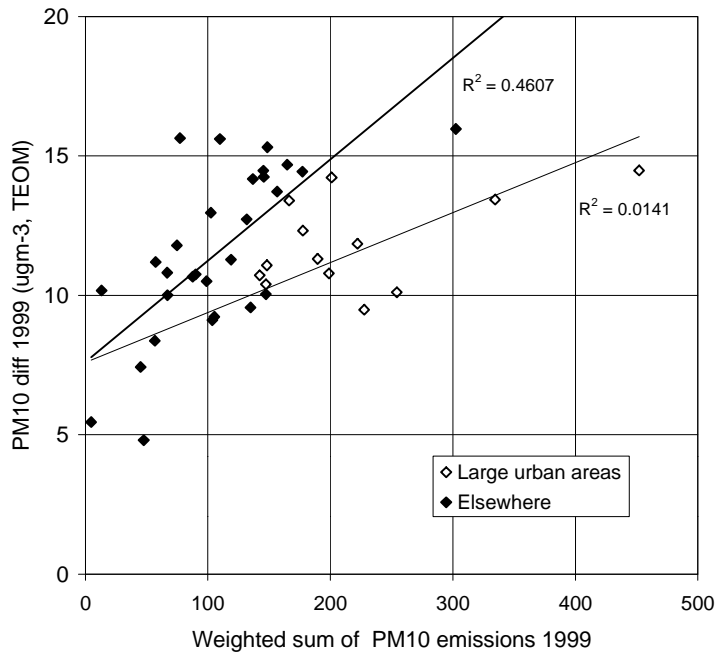


Figure 6.2 The relationship between the roadside increment of PM10 and road link emissions

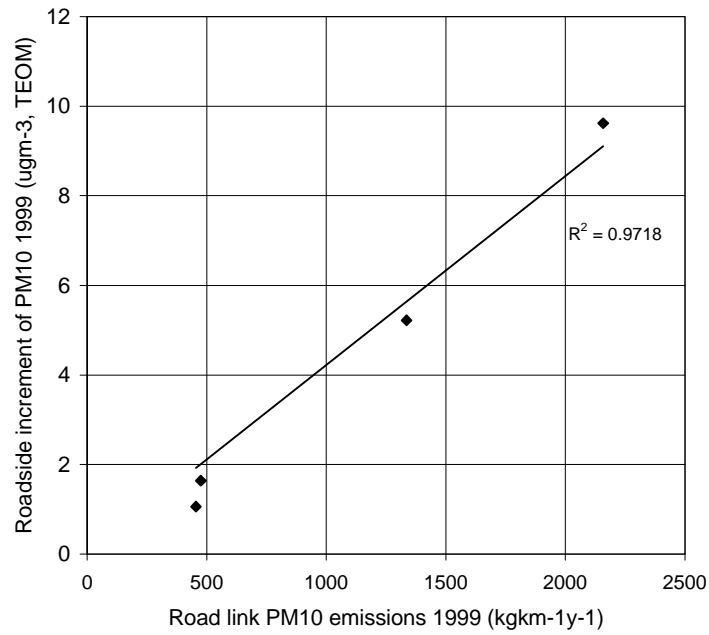


Figure 6.3
Estimated annual mean background PM10 concentration, for base years
1996 to 1999 ($\mu\text{g m}^{-3}$, gravimetric). Ref NETCEN 31/08/2001 /naqs3/pm10aqsef

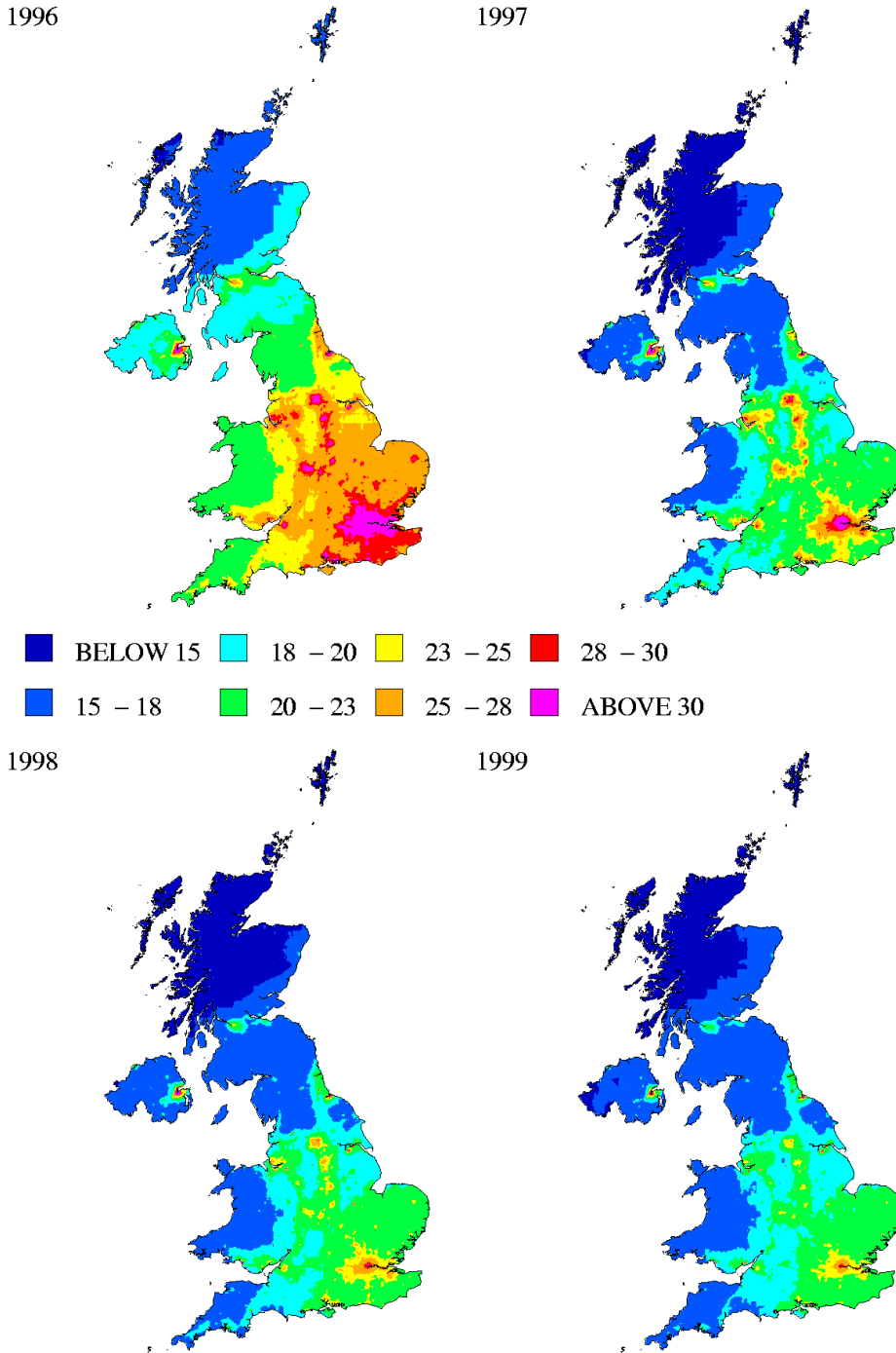


Figure 6.4a Measured and modelled annual mean PM10 at background sites 1996 (ugm-3, gravimetric)

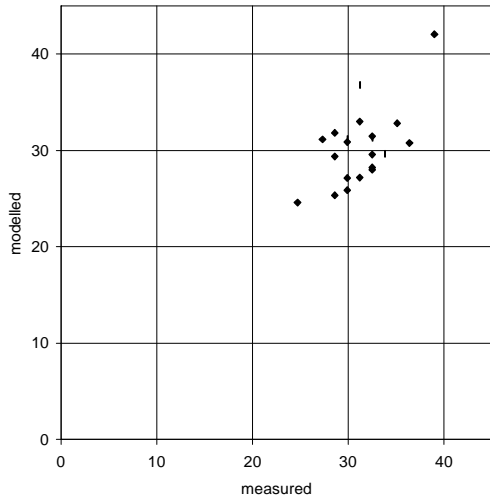


Figure 6.4b Measured and modelled annual mean PM10 at background sites 1997 (ugm-3, gravimetric)

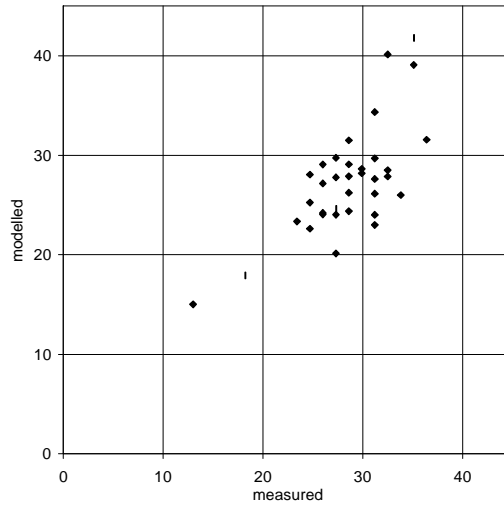


Figure 6.4c Measured and modelled annual mean PM10 at background sites 1998 (ugm-3, gravimetric)

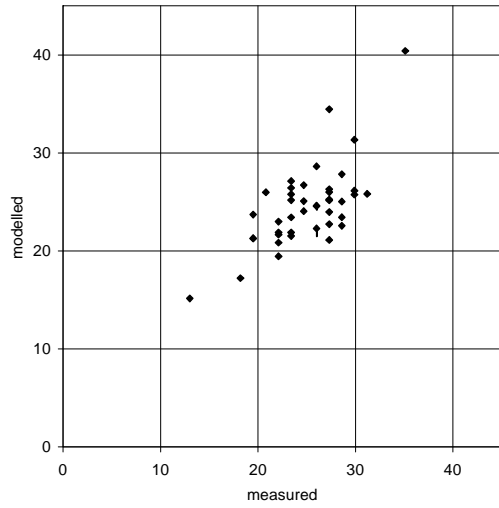


Figure 6.4d Measured and modelled annual mean PM10 at background sites 1999 (ugm-3, gravimetric)

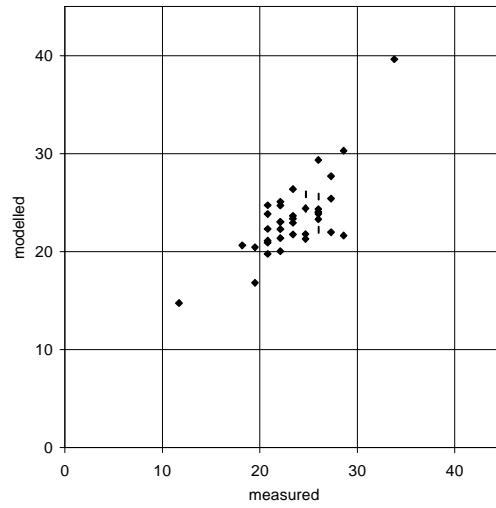
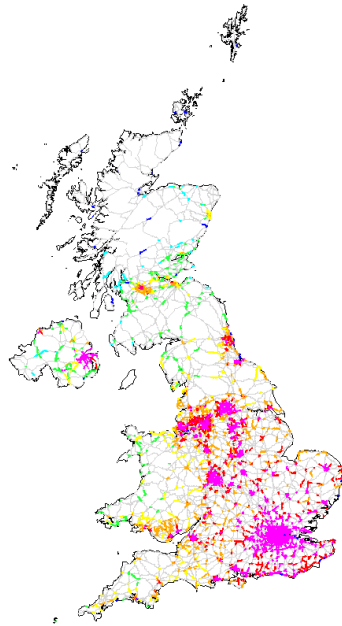
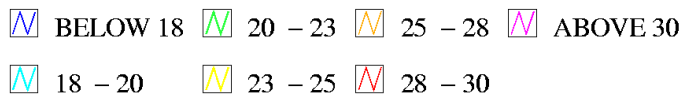
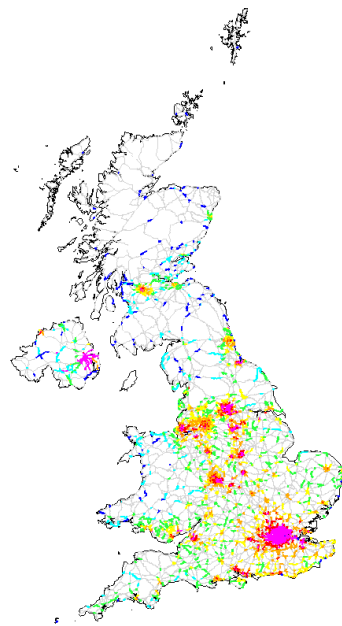


Figure 6.5.
Major urban roads, estimated annual mean roadside PM10 concentration,
for base years 1996 to 1999 (ugm-3, gravimetric), Ref NETCEN 31/08/2001 census_scen

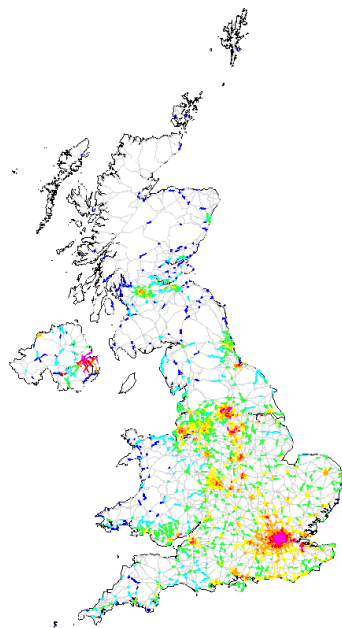
1996



1997



1998



1999

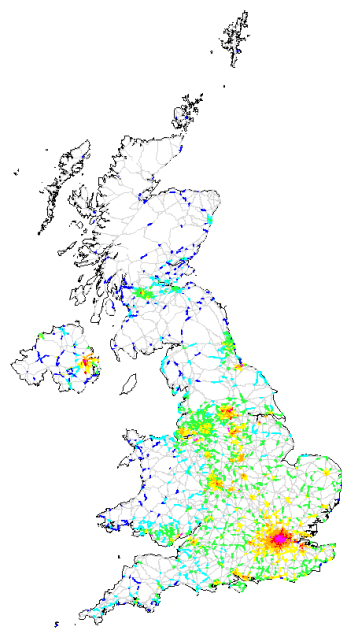


Figure 6.6b Measured and modelled annual mean PM10 at roadside sites 1997 (ugm-3, gravimetric)

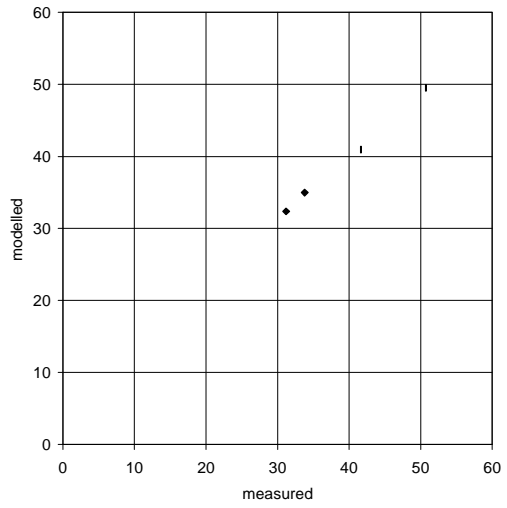


Figure 6.6c Measured and modelled annual mean PM10 at roadside sites 1998 (ugm-3, gravimetric)

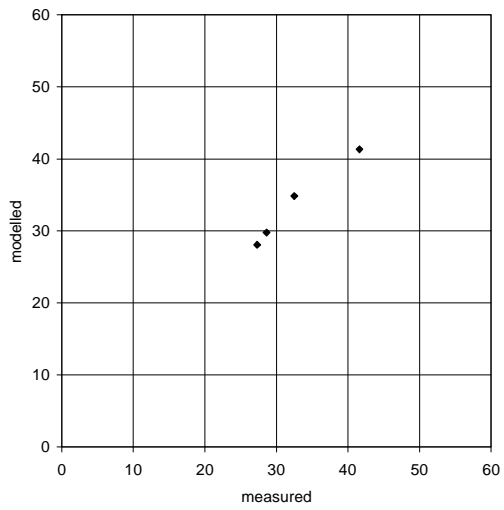


Figure 6.6d Measured and modelled annual mean PM10 at roadside sites 1999 (ugm-3, gravimetric)

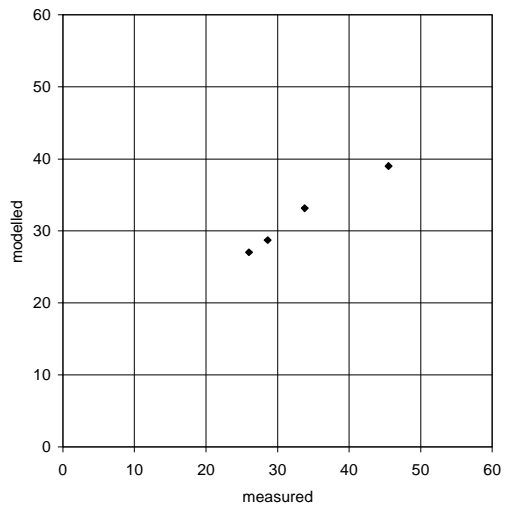
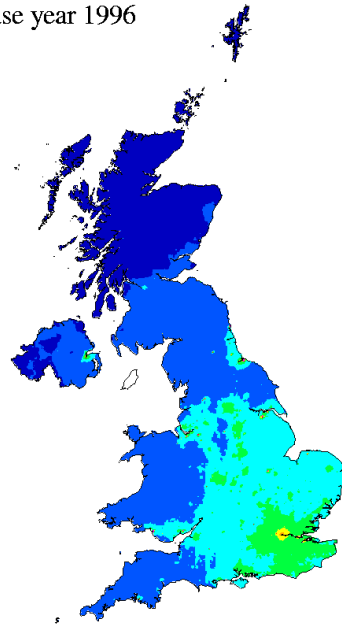
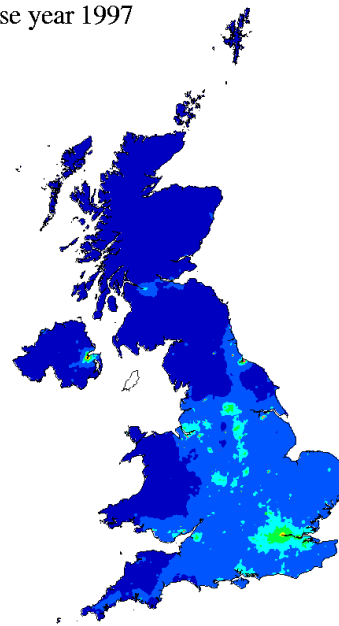


Figure 6.7
Estimated annual mean background PM10 concentration, for 2010 baseline scenario
(ugm-3, gravimetric). Ref NETCEN 31/08/2001 /naqs3/pm10aqsef

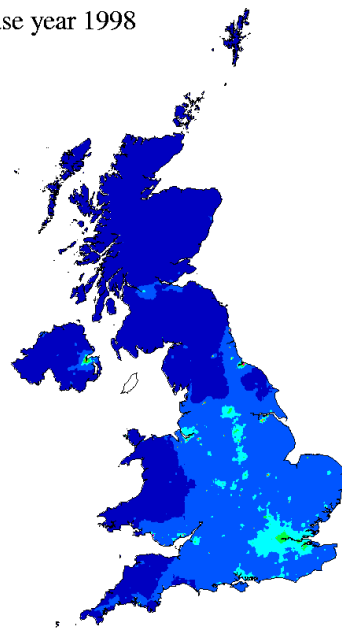
2010, base year 1996



2010, base year 1997



2010, base year 1998



2010, base year 1999

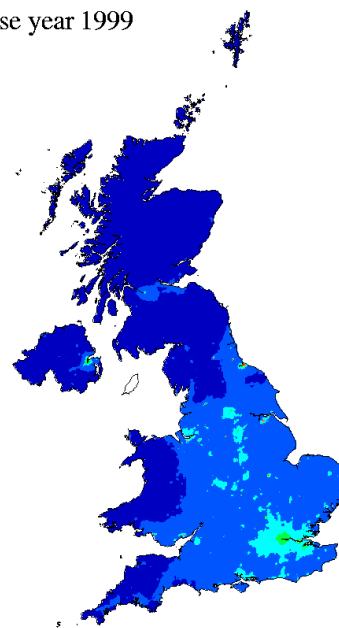
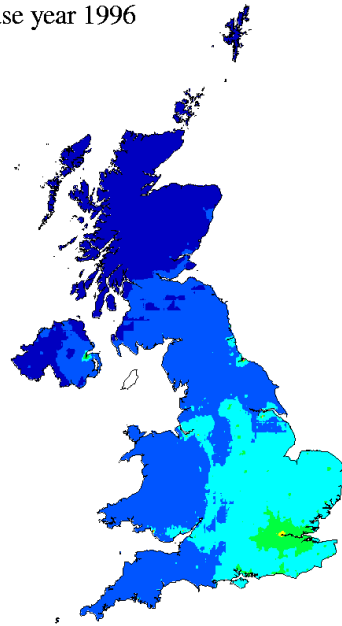
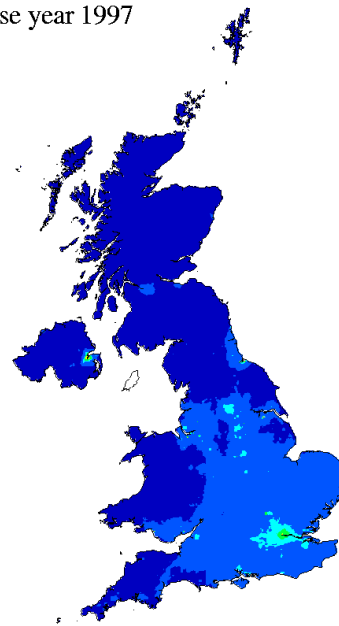


Figure 6.8
Estimated annual mean background PM10 concentration, for 2010 illustrative scenario
(ugm-3, gravimetric). Ref NETCEN 31/08/2001 /naqs3/pm10aqsef

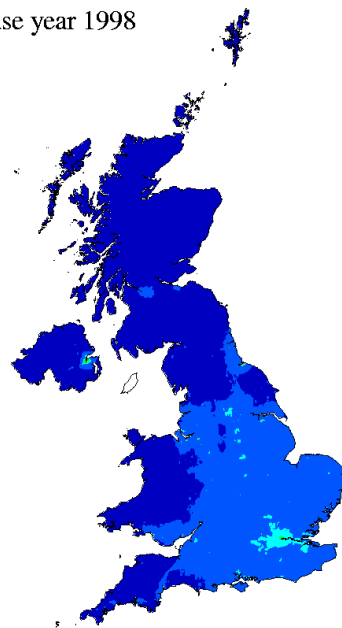
2010, base year 1996



2010, base year 1997



2010, base year 1998



2010, base year 1999

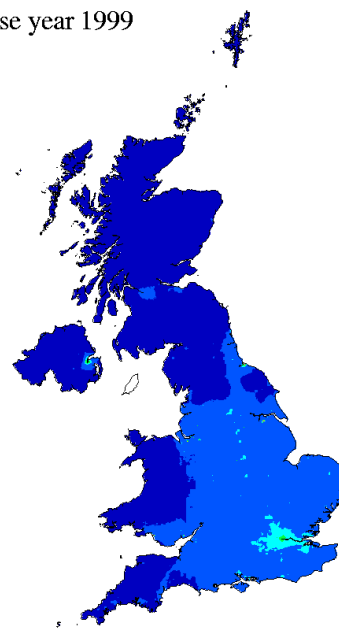
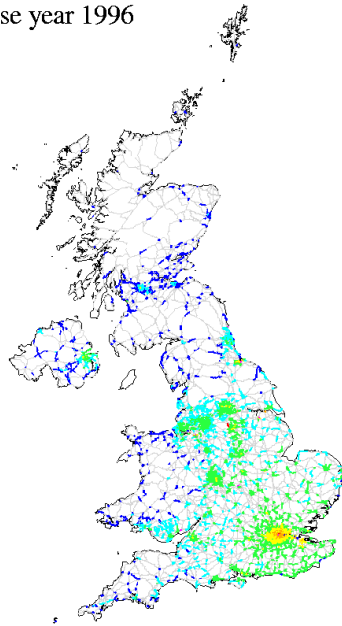
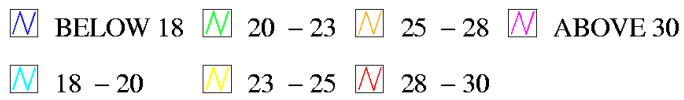
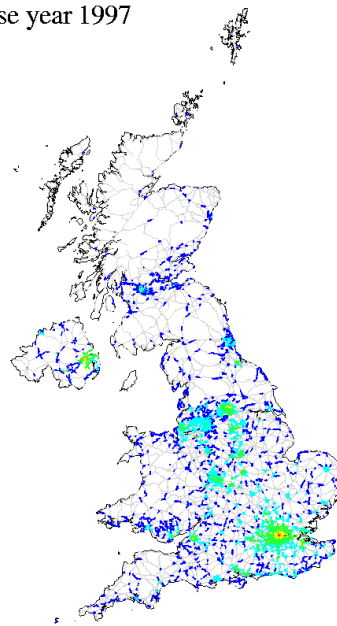


Figure 6.9.
Major urban roads, estimated annual mean roadside PM10 concentration,
for 2010 baseline scenario (ugm-3, gravimetric), Ref NETCEN 31/08/2001 census_scen

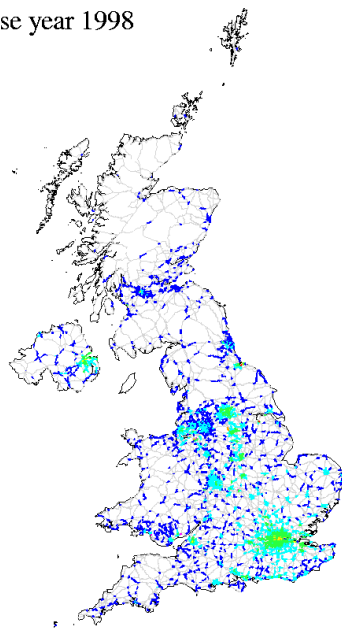
2010, base year 1996



2010, base year 1997



2010, base year 1998



2010, base year 1999

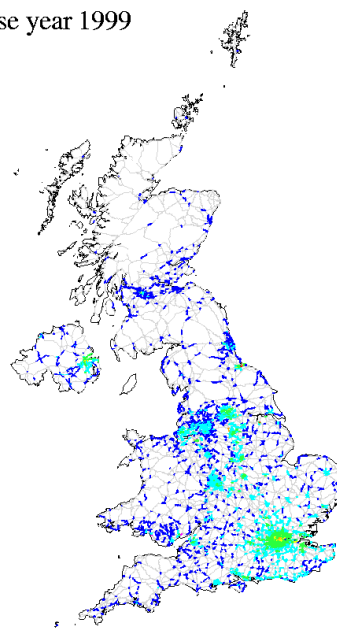
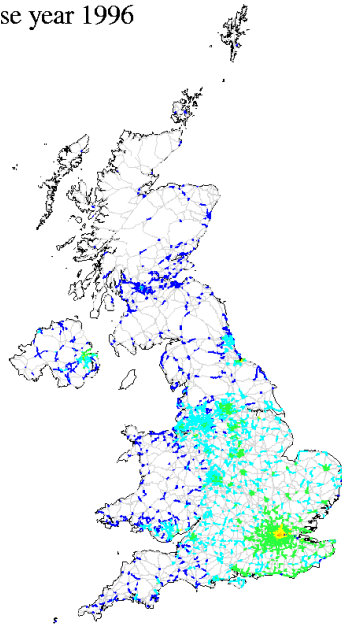
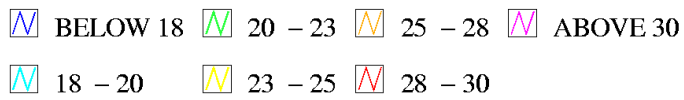
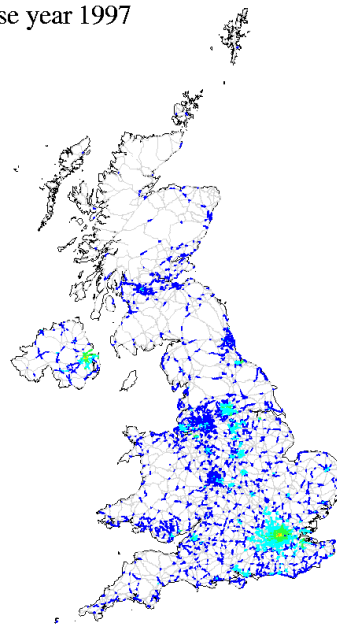


Figure 6.10.
Major urban roads, estimated annual mean roadside PM10 concentration,
for 2010 illustrative scenario (ugm-3, gravimetric), Ref NETCEN 31/08/2001 census_scen

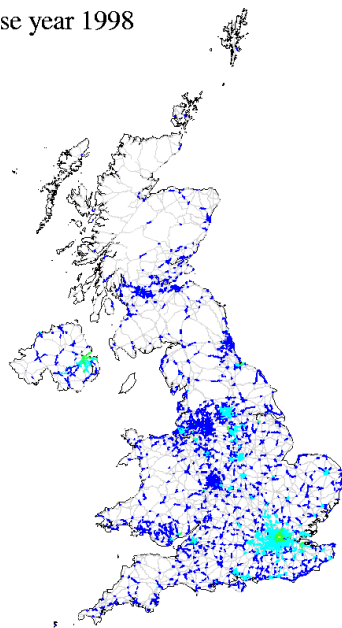
2010, base year 1996



2010, base year 1997



2010, base year 1998



2010, base year 1999

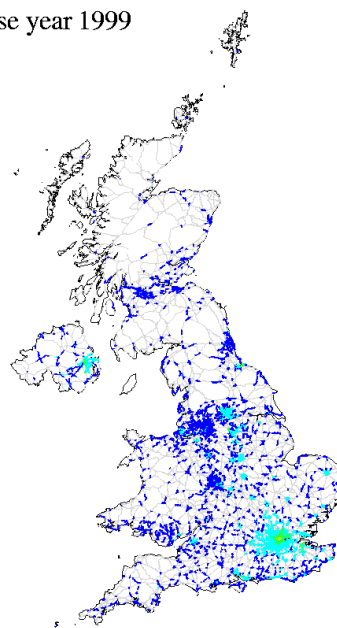


Figure 8.1 Comparison of modelled and measured annual mean PM10 concentrations for 2000 for a range of base years (1:1 line shown)

