



Figure 1 Frequency of calm winds, %, all months 1949 to 1997

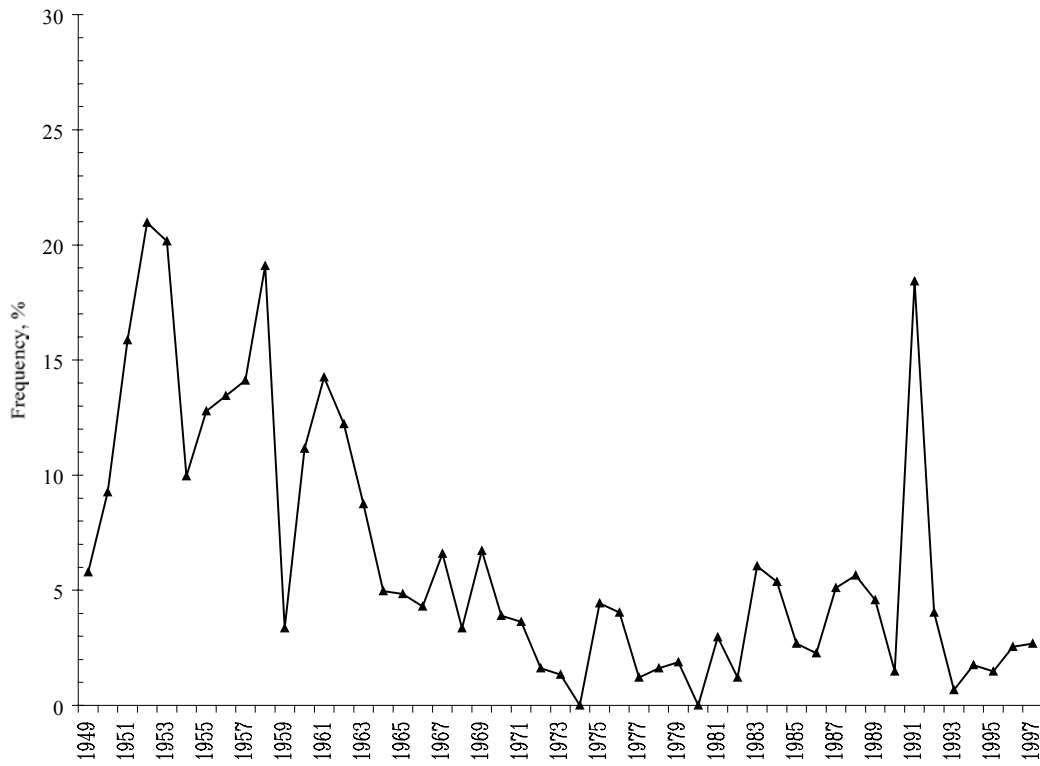


Figure 2 Frequency of calm winds, %, December 1949 to 1997

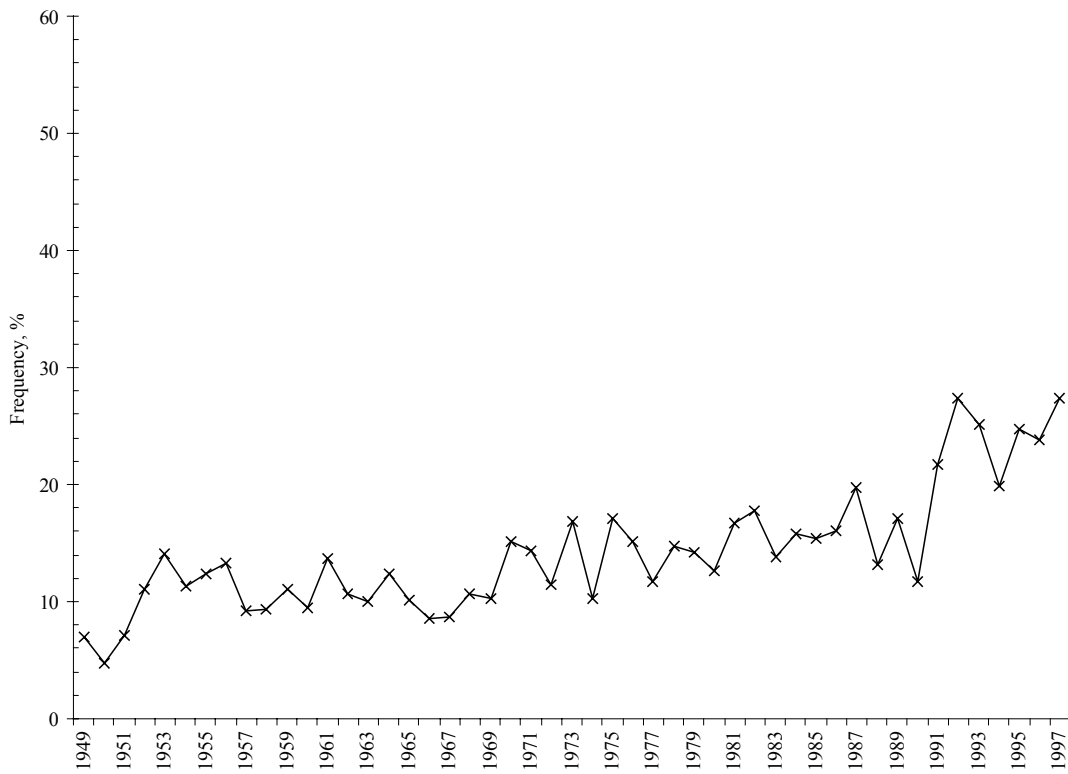


Figure 3 Frequency of winds between 1 and 3 knots, %, all months 1949 to 1997

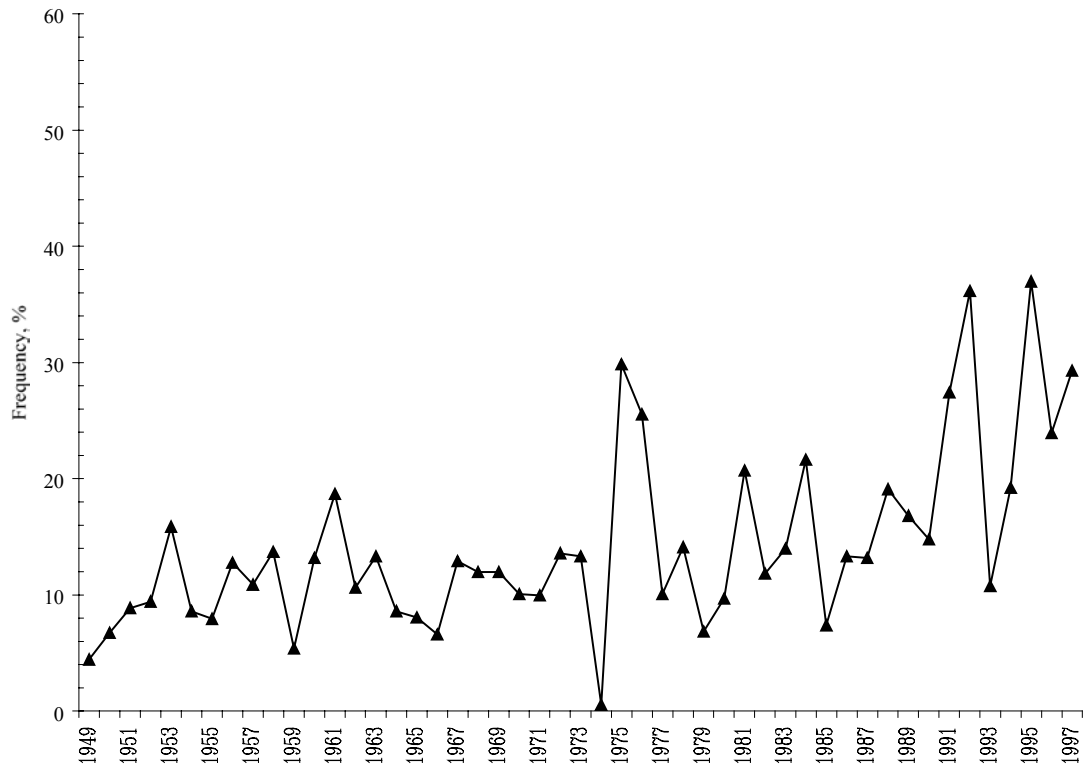


Figure 4 Frequency of winds between 1 and 3 knots, %, December 1949 to 1997

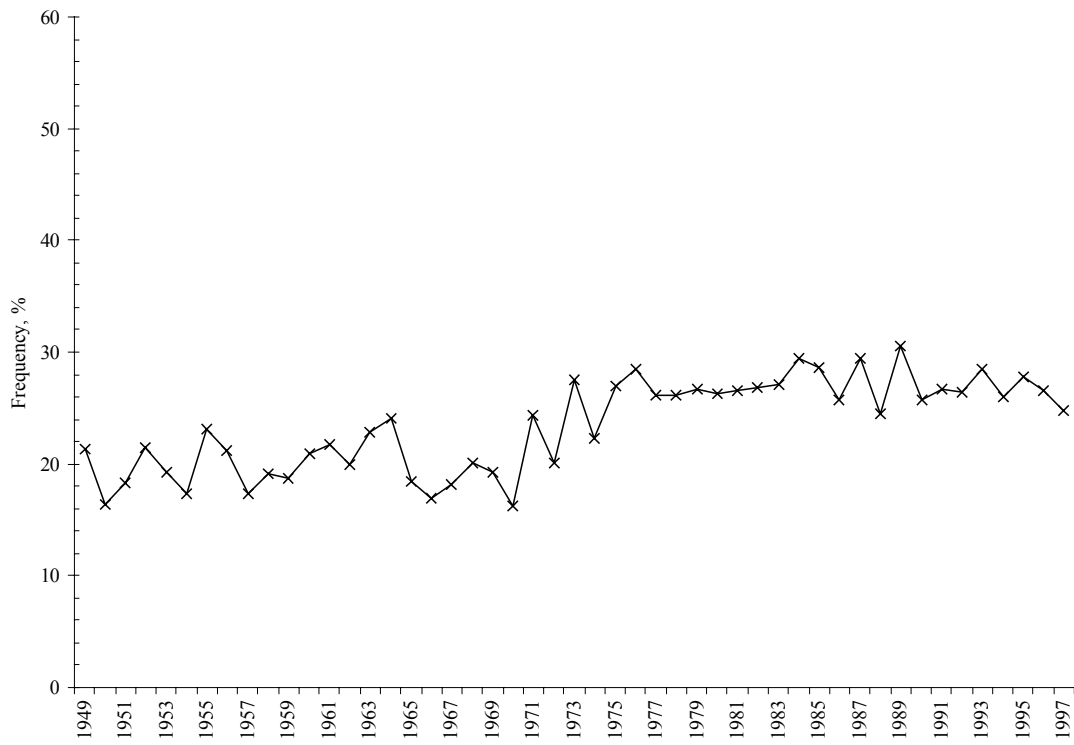


Figure 5 Frequency of winds between 4 and 6 knots, %, all months 1949 to 1997

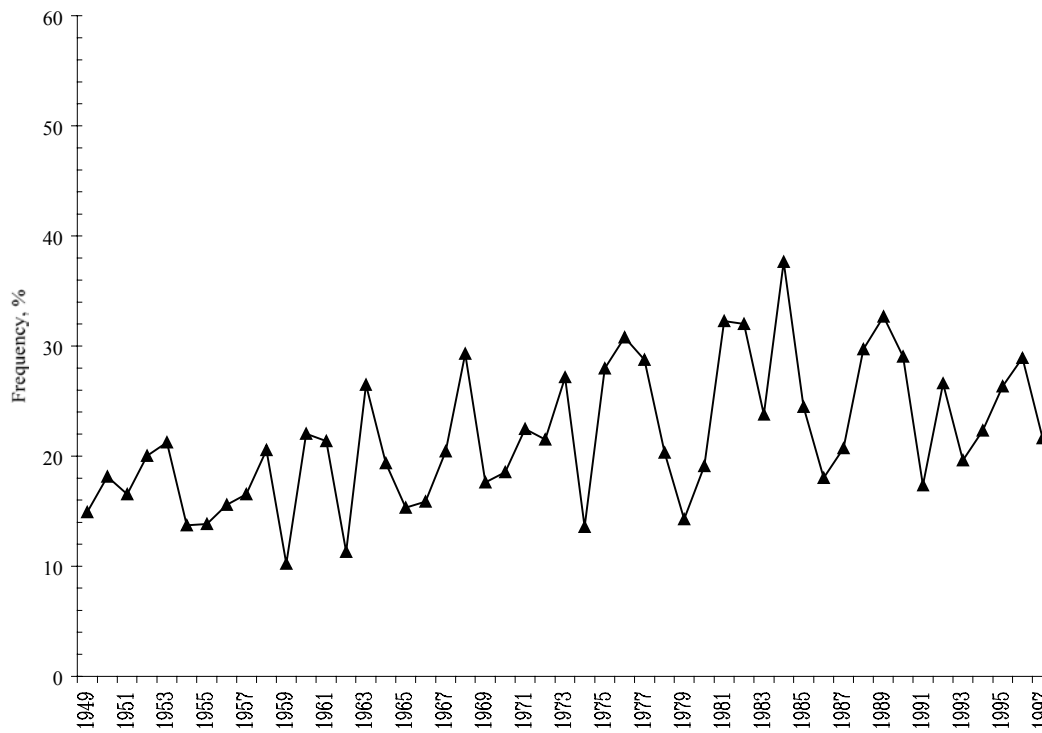


Figure 6 Frequency of winds between 4 and 6 knots, %, December 1949 to 1997

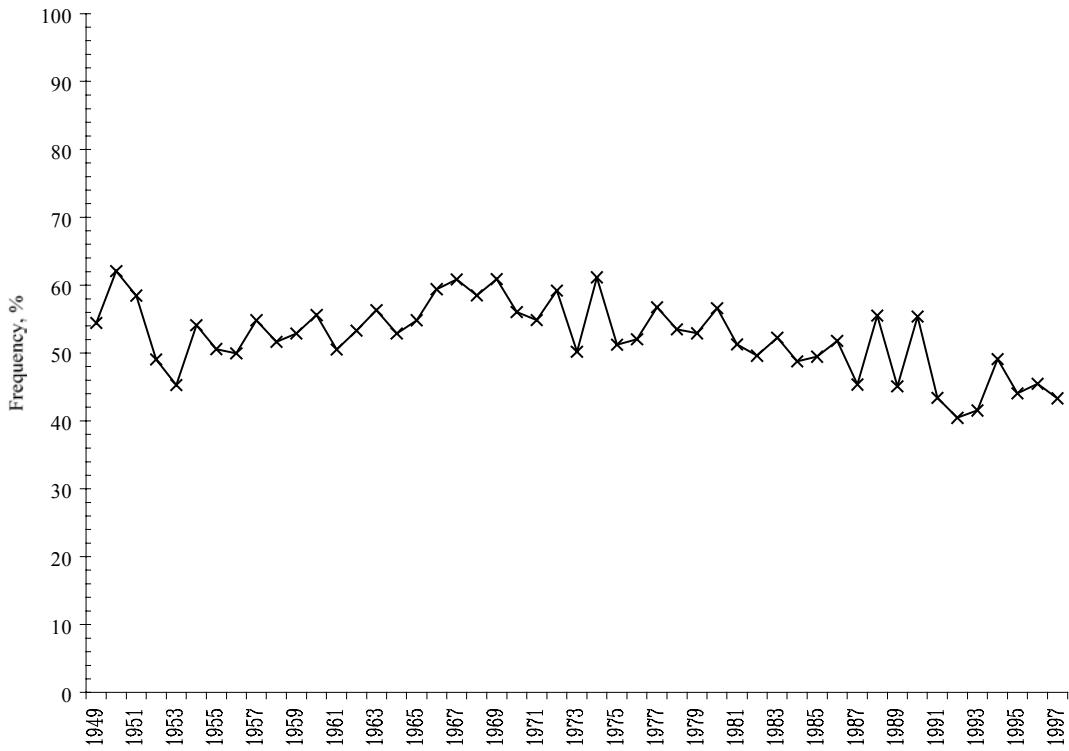


Figure 7 Frequency of winds between 7 and 16 knots, %, all months 1949 to 1997

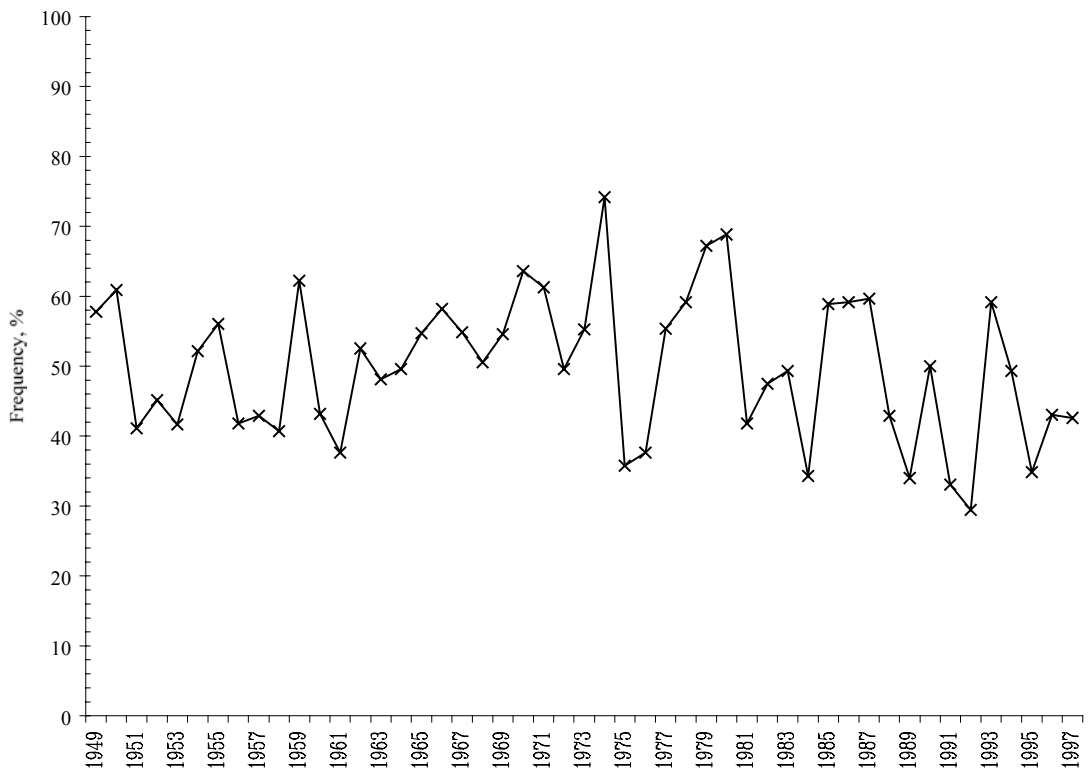


Figure 8 Frequency of winds between 7 and 16 knots, %, December 1949 to 1997

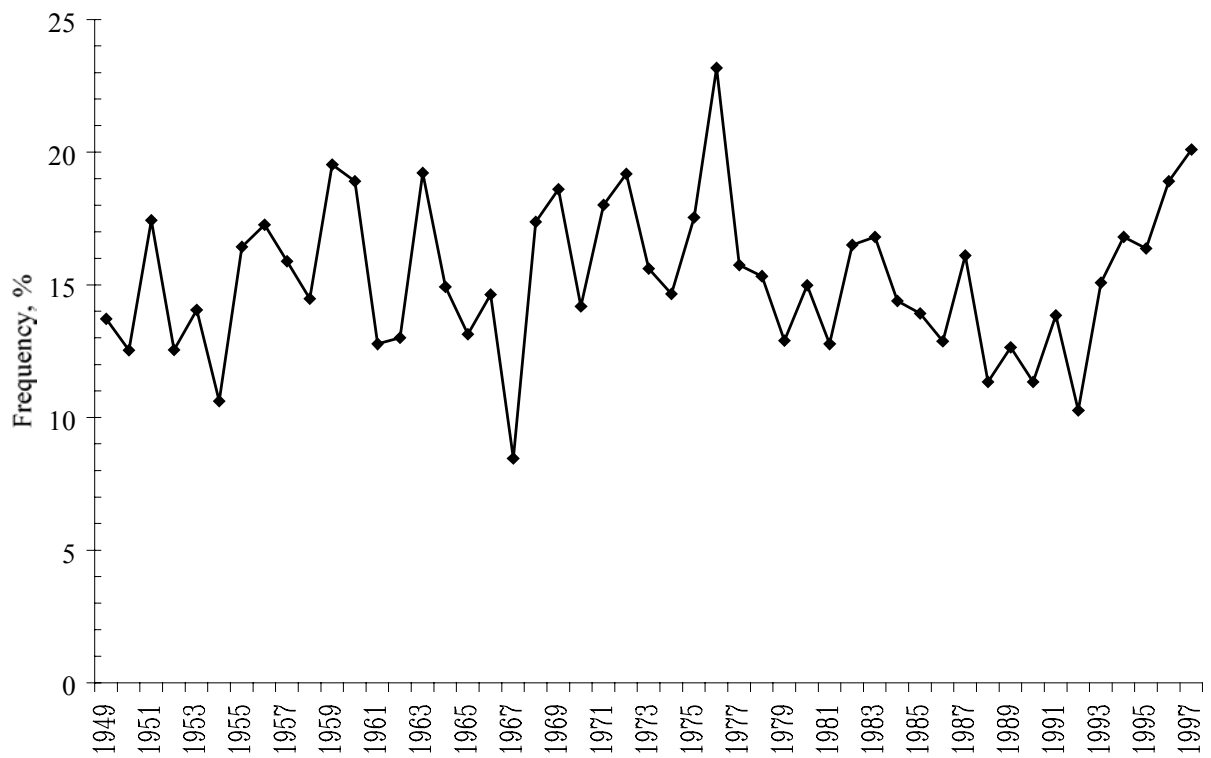


Figure 9 Frequency of winds from eastern quadrant (directions 046-135) for all wind speeds.

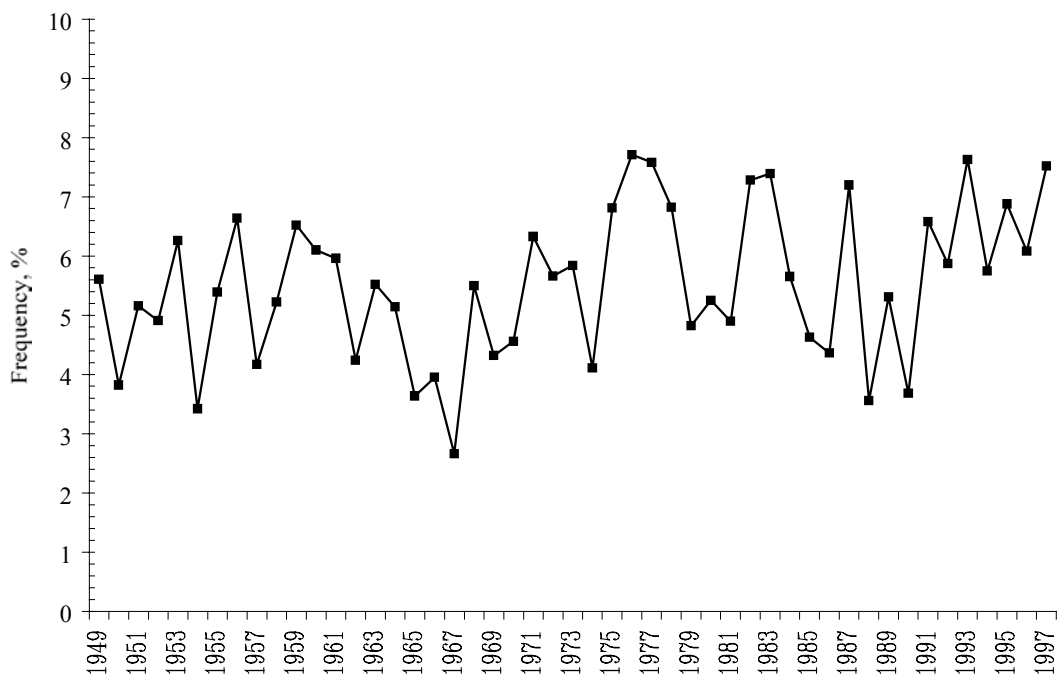


Figure 10 Frequency of moderate wind speeds (range 1-6 knots) from eastern quadrant (directions 046-135).