

Figure 21 Rose plot showing the average wind speed, m s^{-1} , from each direction, 1949-60

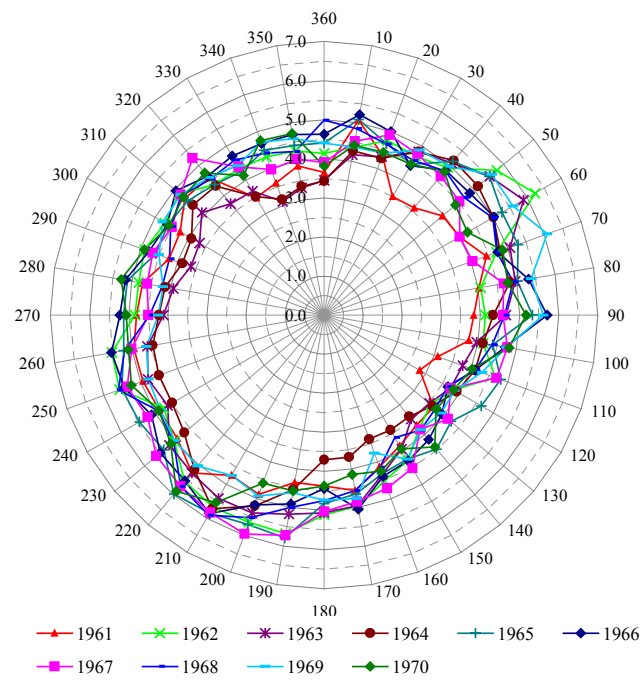


Figure 22 Rose plot showing the average wind speed, m s^{-1} , from each direction, 1961-70

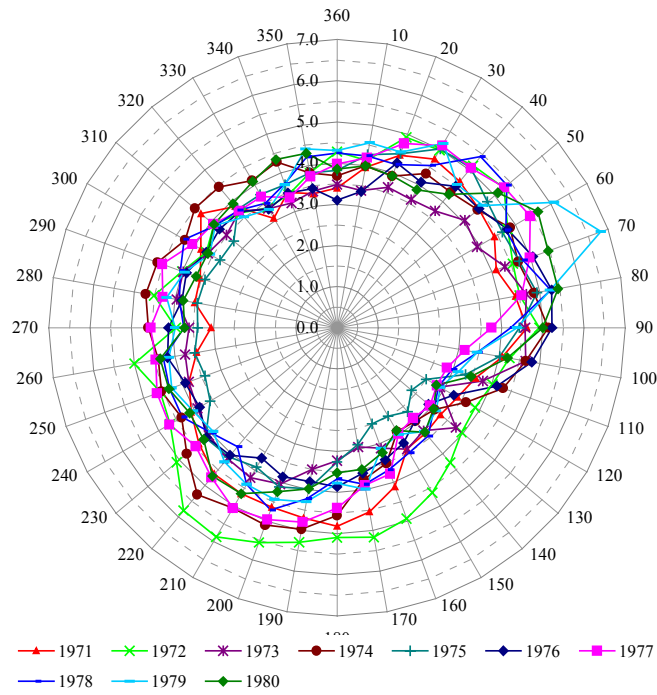


Figure 23 Rose plot showing the average wind speed, m s^{-1} , from each direction, 1971-80

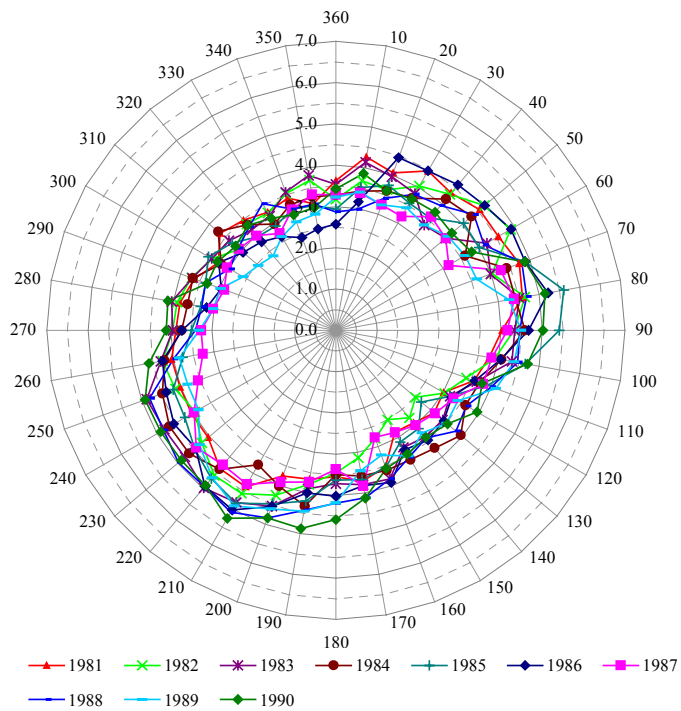


Figure 24 Rose plot showing the average wind speed, m s^{-1} , from each direction, 1981-90

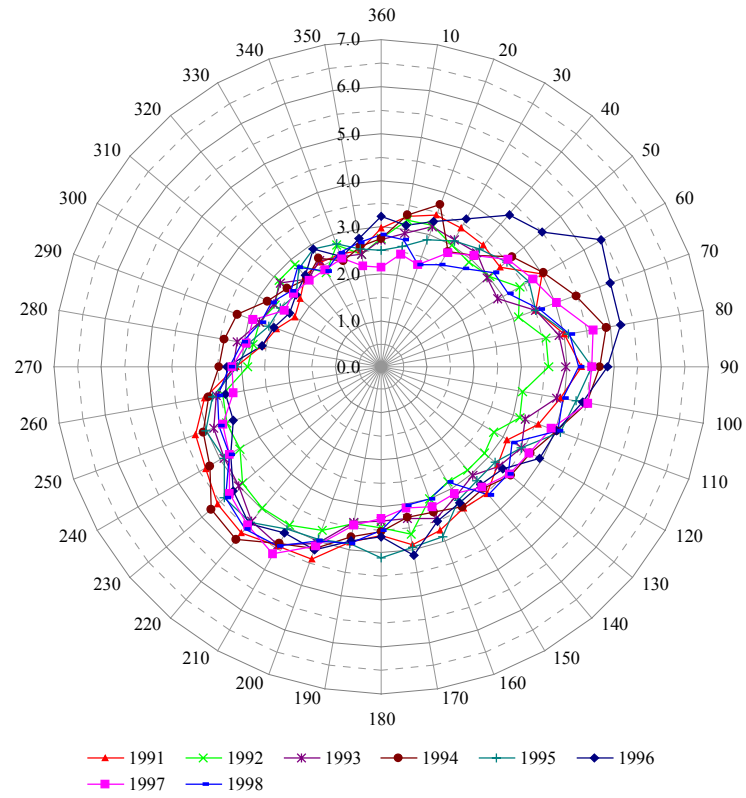


Figure 25 Rose plot showing the average wind speed, m s^{-1} , from each direction, 1991-98