

Figure 26 Rose plot of average PM₁₀ concentration, $\mu\text{g m}^{-3}$, from each direction, on all available days in 1992-98. Wind data from London Heathrow; PM₁₀ data from London Bloomsbury are TEOM data as recorded (no gravimetric correction factor applied).

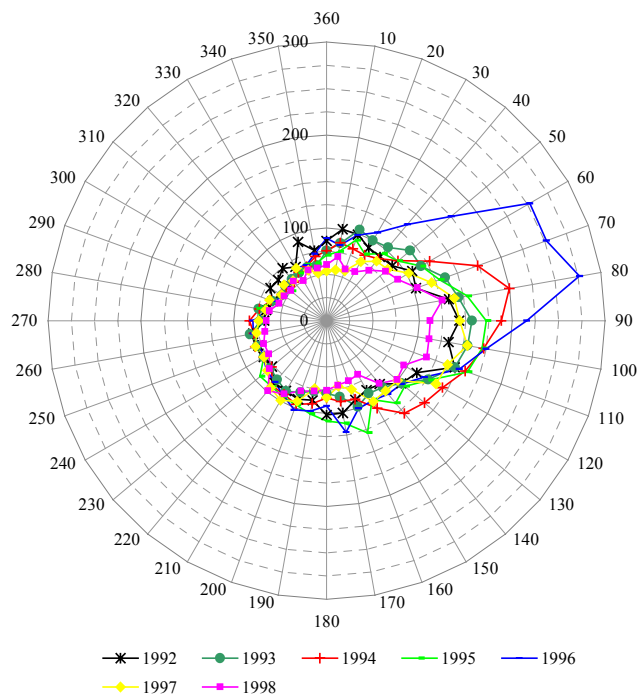


Figure 27 Rose plot of average PM₁₀ flux, $\mu\text{g m}^{-2}\text{s}^{-1}$, from each direction, on all available days in 1992-98. Wind data from London Heathrow; PM₁₀ data from London Bloomsbury are TEOM data as recorded (no gravimetric correction factor applied). Flux equals wind speed times concentration (Equation 1).

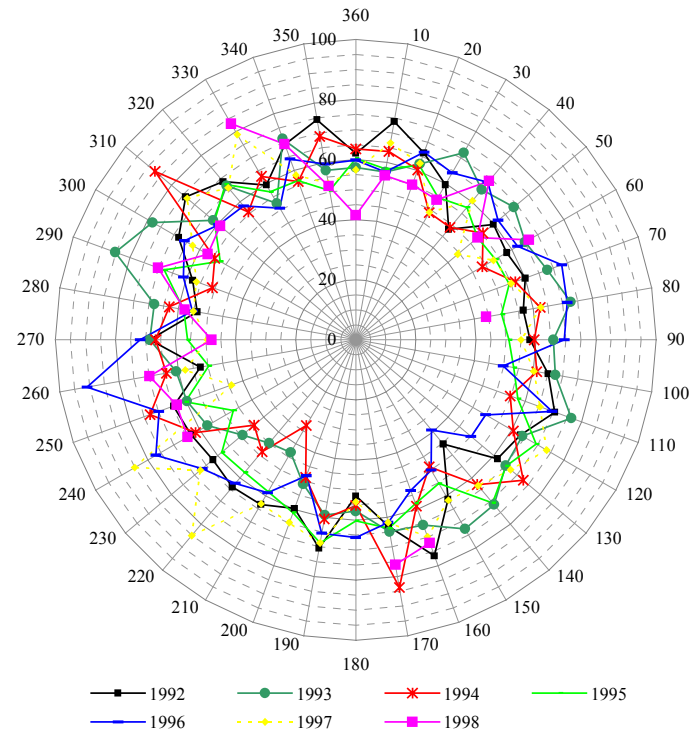


Figure 28 Rose plot of average PM_{10} concentration, $\mu g m^{-3}$, from each direction, on all exceedance days in 1992-98. Wind data from London Heathrow; PM_{10} data from London Bloomsbury are TEOM data as recorded (no gravimetric correction factor applied).

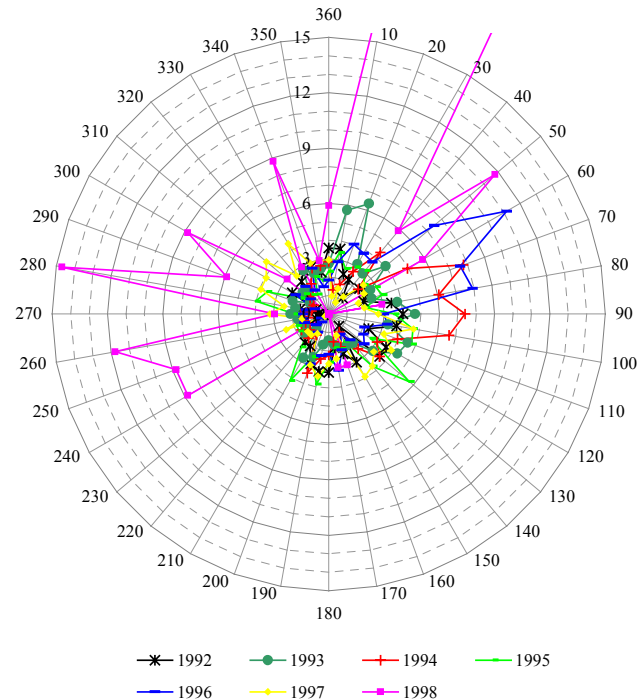


Figure 29 Rose Plot of frequency of wind directions, %, on all exceedance days from 1992-98. Wind data from London Heathrow.

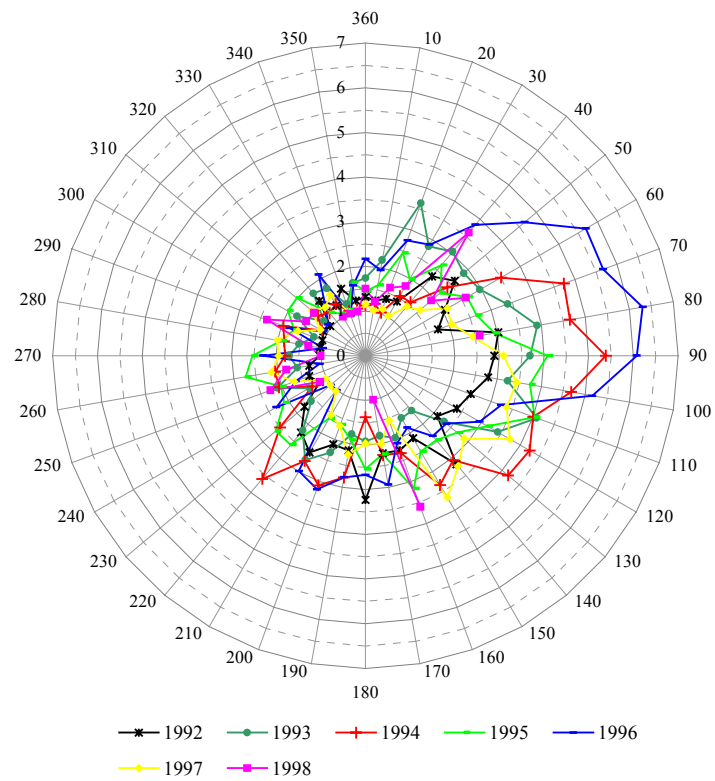


Figure 30 Rose Plot of average wind speed, m s^{-1} , on all exceedance days from 1992-98. Data from London Heathrow.

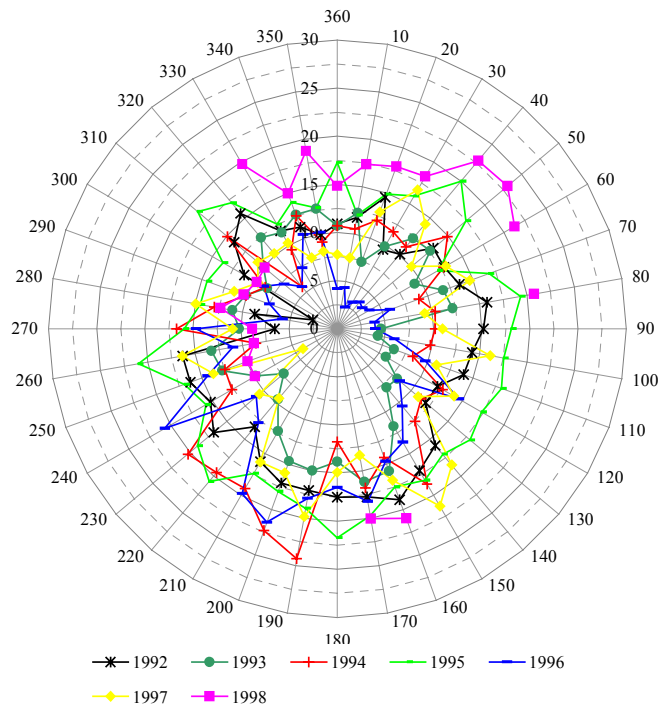


Figure 31 Rose Plot of average temperature, C, on all exceedance days from 1992-98. Data from London Heathrow.

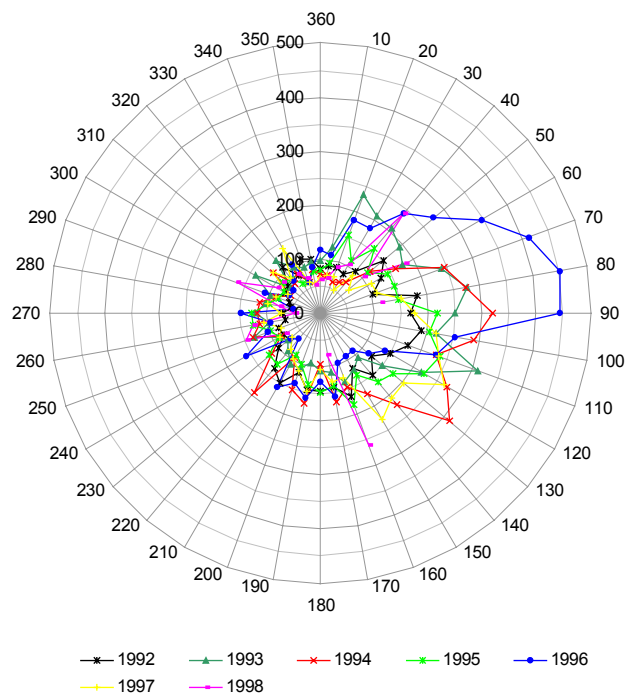


Figure 32 Rose plot of average PM₁₀ flux, $\mu\text{g m}^{-2}\text{s}^{-1}$, from each direction, on all exceedance days in 1992-98. Wind data from London Heathrow; PM₁₀ data from London Bloomsbury are TEOM data as recorded (no gravimetric correction factor applied). Flux equals wind speed times concentration (Equation 1).