

Figure 36 Rose Plot of Average  $PM_{10}$  concentration,  $\mu g m^{-3}$ , on Days of Prolonged Exceedence (Group 1 days: episodes of 4 days or more) from 1992-98. Wind data from London Heathrow;  $PM_{10}$  data from London Bloomsbury.

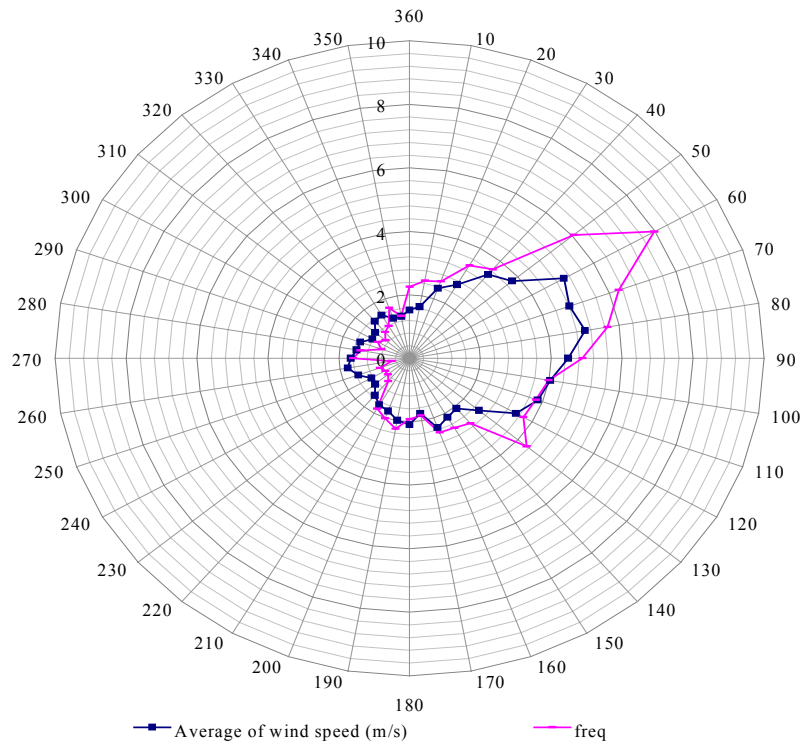


Figure 37 Rose Plot of Average wind speed,  $m s^{-1}$ , and frequency of wind directions, %, on Days of Prolonged Exceedence (Group 1 days: episodes of 4 days or more) from 1992-98. Wind data from London Heathrow.

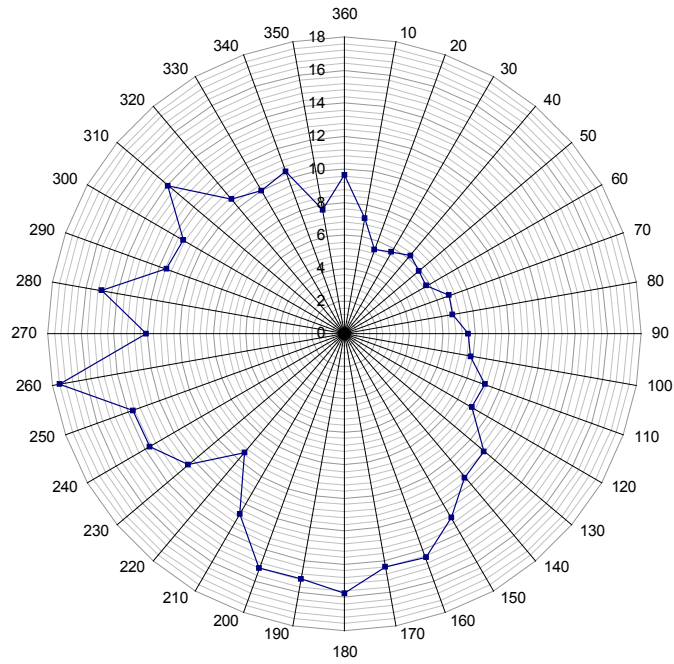


Figure 38 Rose Plot of Average Temperature, C, on Days of Prolonged Exceedence (Group 1 days: episodes of 4 days or more) from 1992-98. Data from London Heathrow.

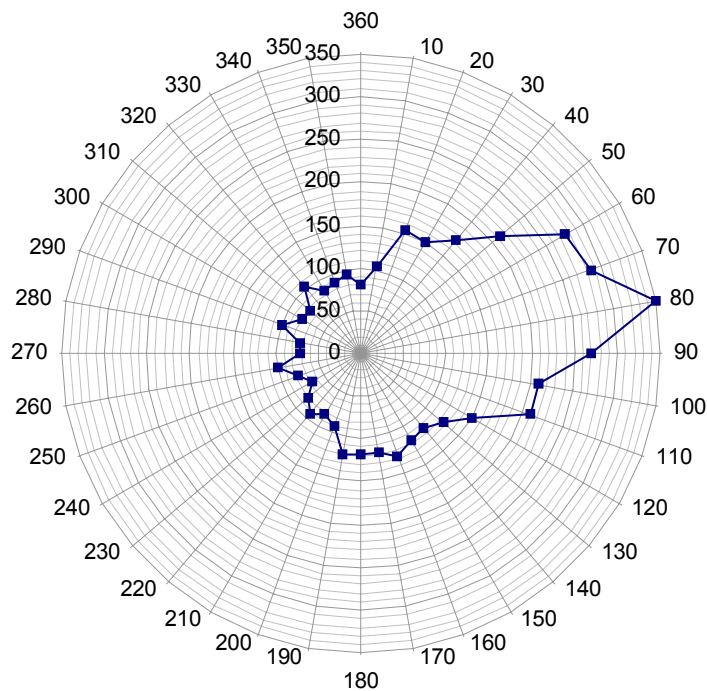


Figure 39 Rose Plot of Average PM<sub>10</sub> Flux,  $\mu\text{g m}^{-2}\text{s}^{-1}$ , on Days of Prolonged Exceedence (Group 1 days: episodes of 4 days or more) from 1992-98. Wind data from London Heathrow; PM<sub>10</sub> data from London Bloomsbury. Flux equals wind speed times concentration (Equation 1).