

Figure 37 Values of the winter index Tu in 1952, the year of the great December smog, using temperature and wind-speed at London Heathrow.

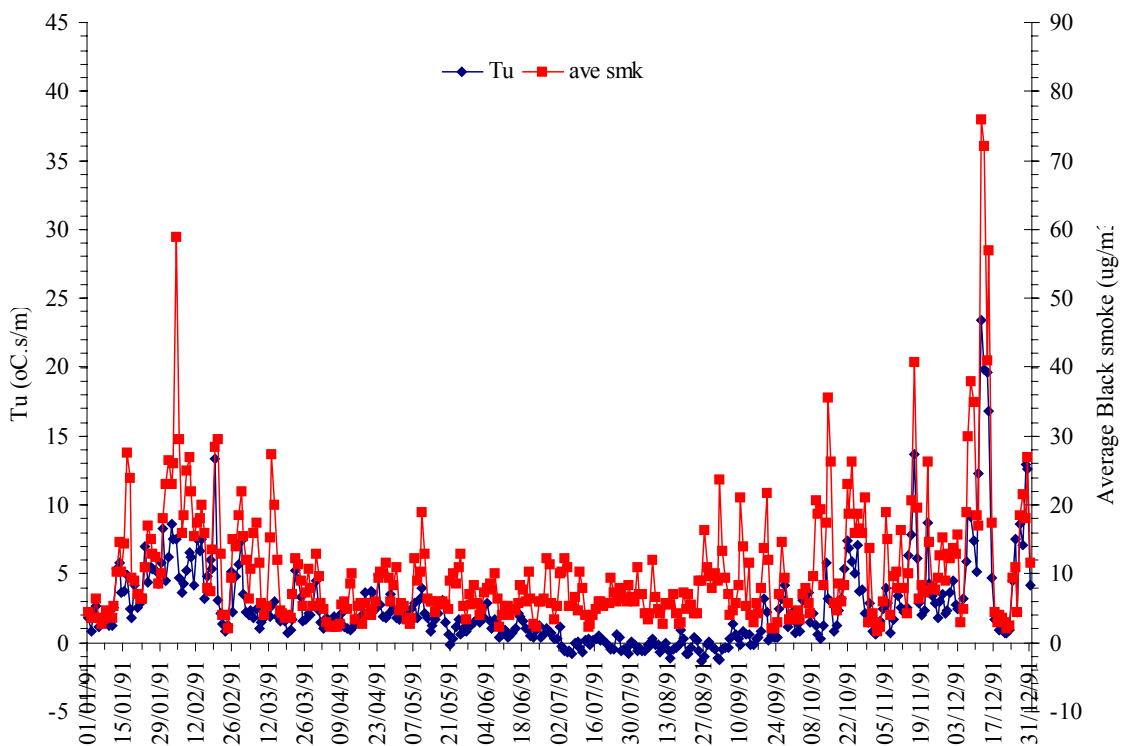


Figure 38 Values of the winter index Tu in 1991, the year of the great December nitrogen dioxide episode, using temperature and wind-speed at London Heathrow. Daily average black smoke at Westminster is also shown.

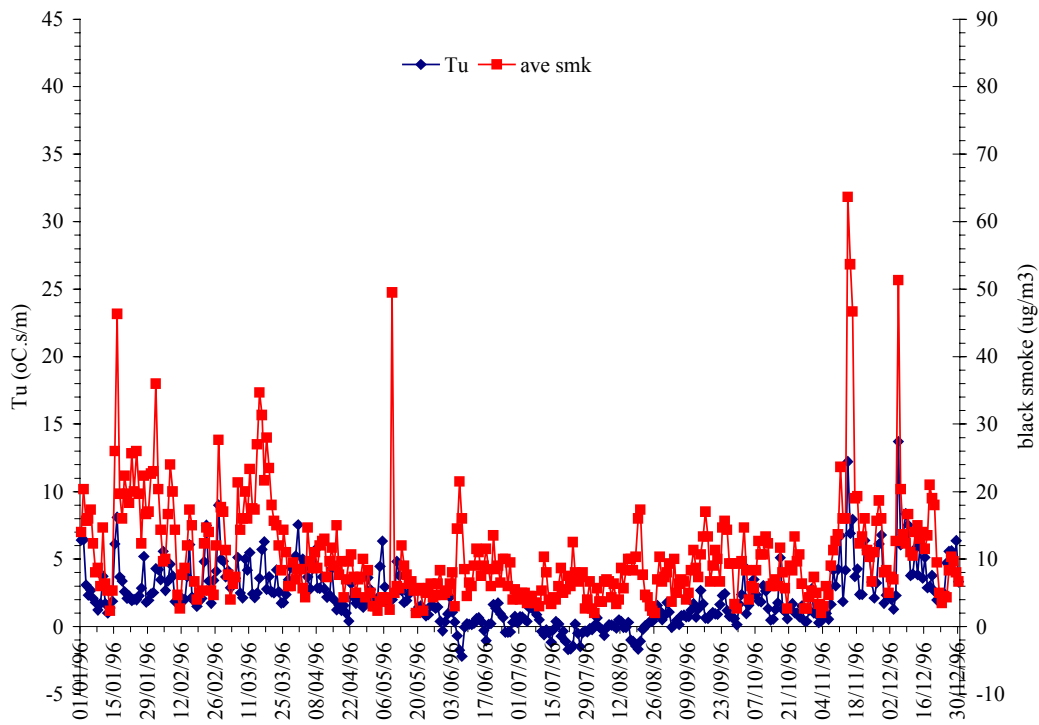


Figure 39 Values of the winter index Tu in 1996, the year of the March PM₁₀ exceedences, using temperature and wind-speed at London Heathrow. Daily average black smoke at Westminster is also shown. Values of Tu are not elevated during the PM₁₀ exceedences.

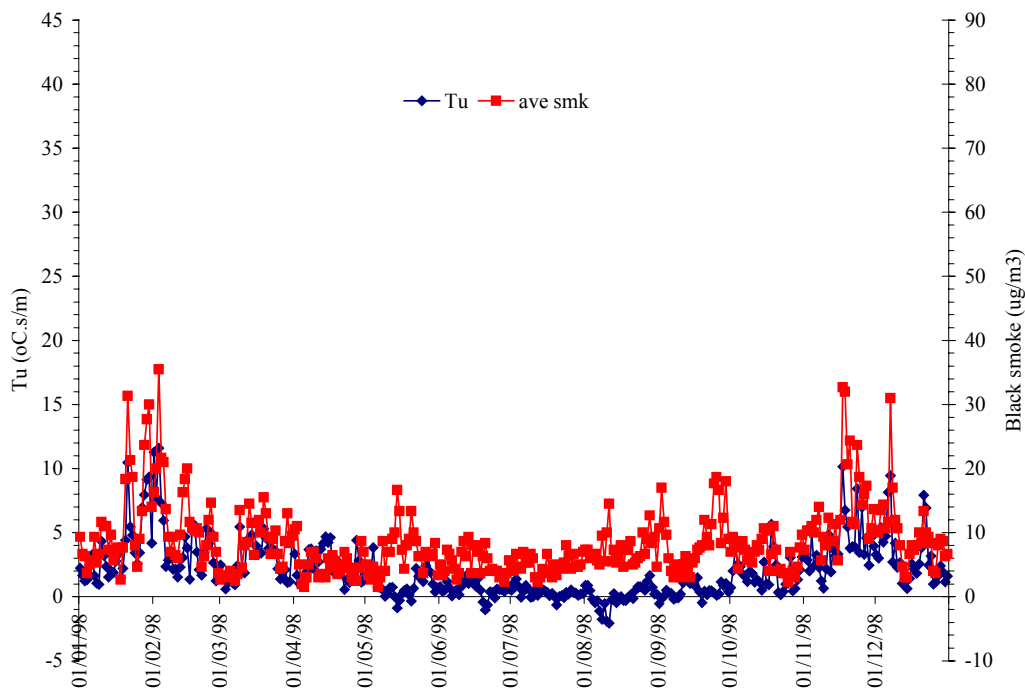


Figure 40 Values of the winter index Tu in 1998, the year regarded as a low pollution period for PM₁₀, using temperature and wind-speed at London Heathrow. Daily average black smoke at Westminster is also shown. Values of Tu are not elevated.