

Diurnal Formaldehyde in ug/m3 at Industrial site

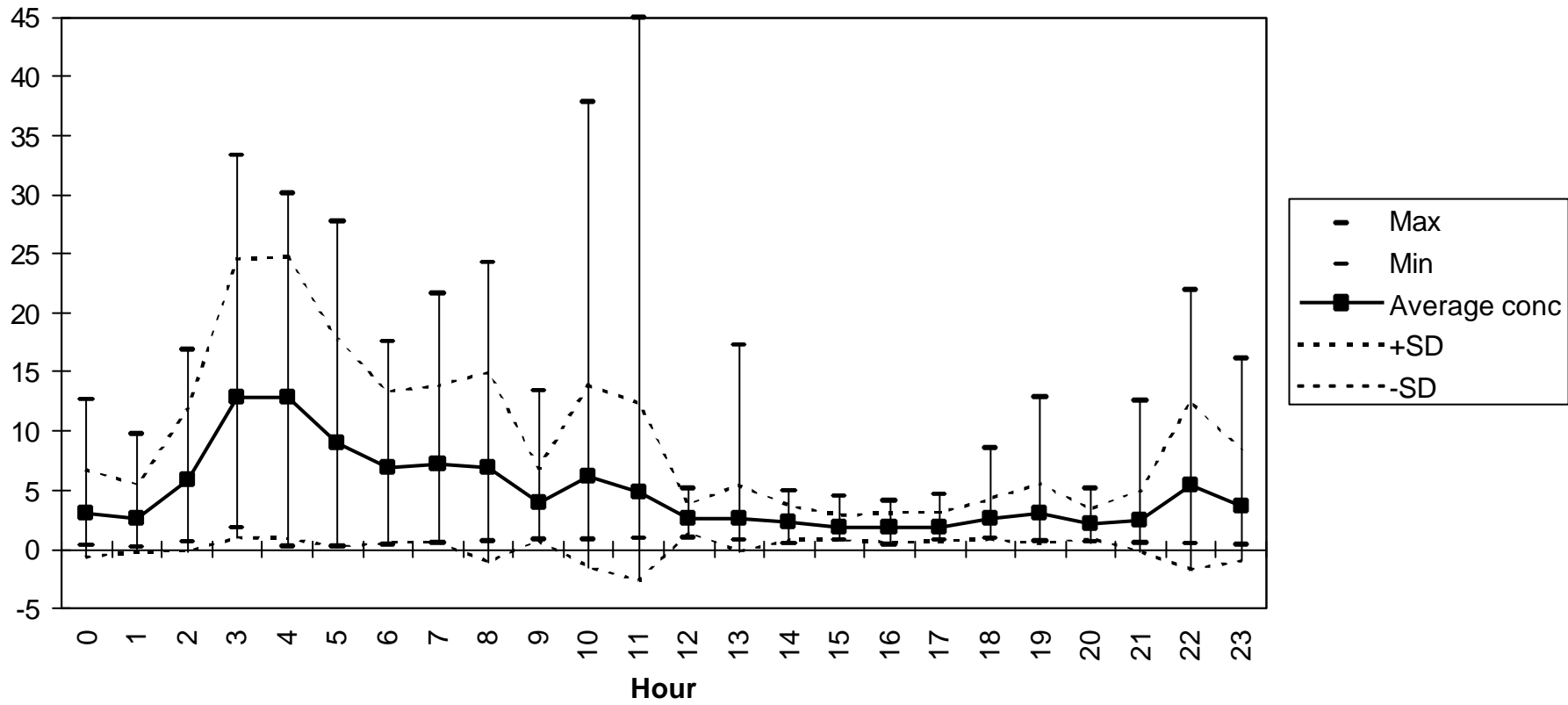


Figure 58 Diurnal variation in formaldehyde measurements at an industrial site.

Average Formaldehyde ug/m3 vs Wind Direction at Industrial site

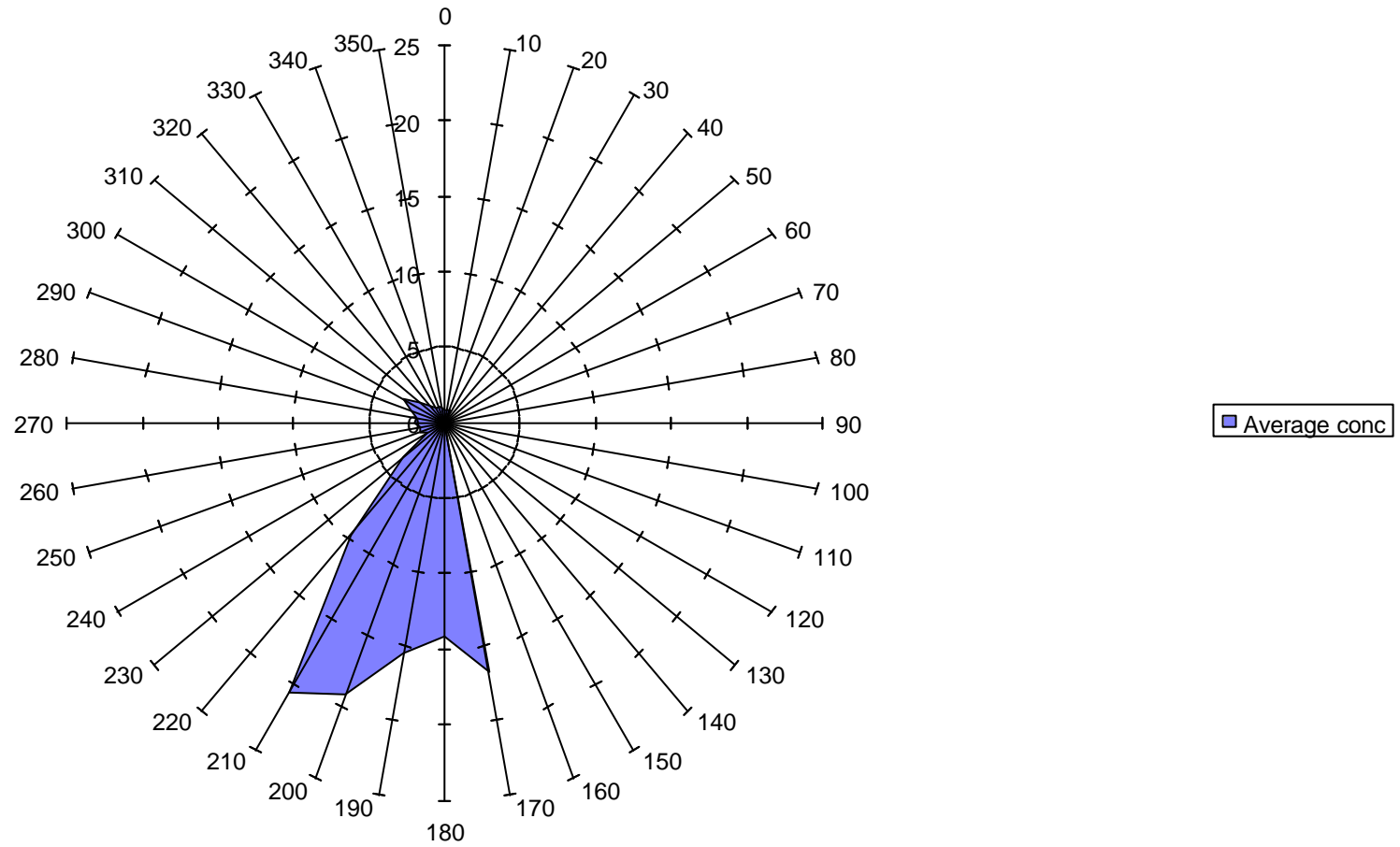


Figure 59 Wind rose data for formaldehyde measurements at an industrial site.

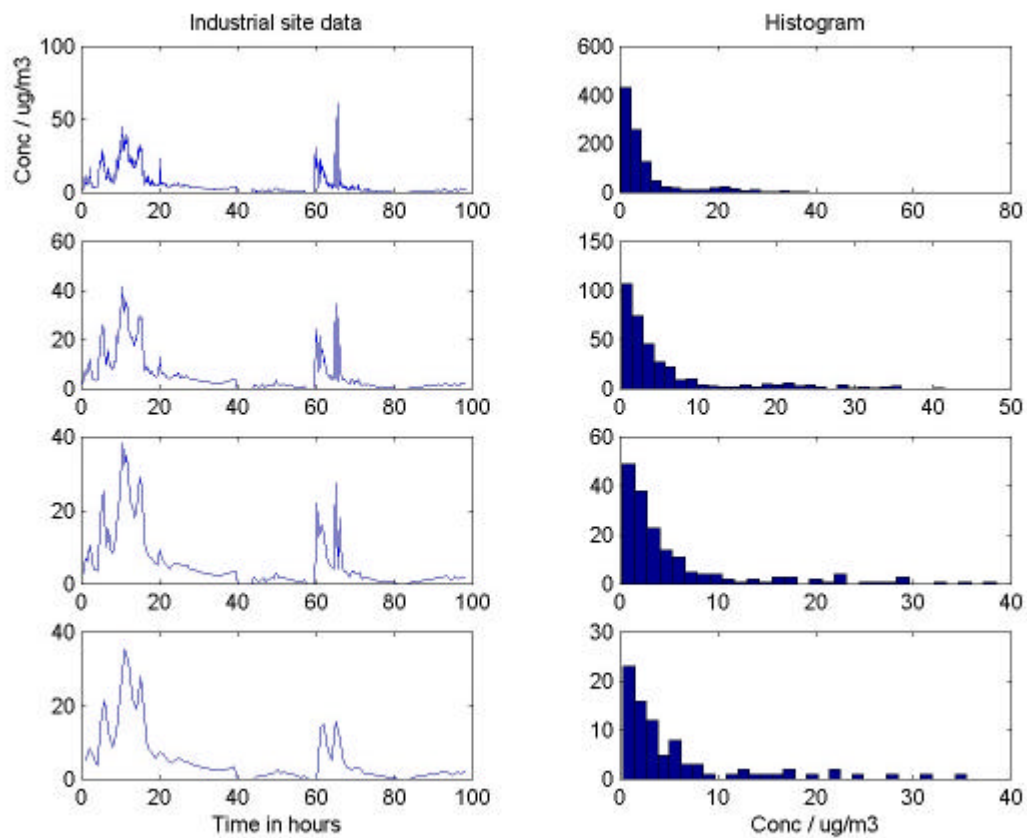


Figure 60 Histogram (frequency - concentration) plots for formaldehyde at an industrial site (averaging periods of 5,15, 30, and 60 minutes are given top - bottom)

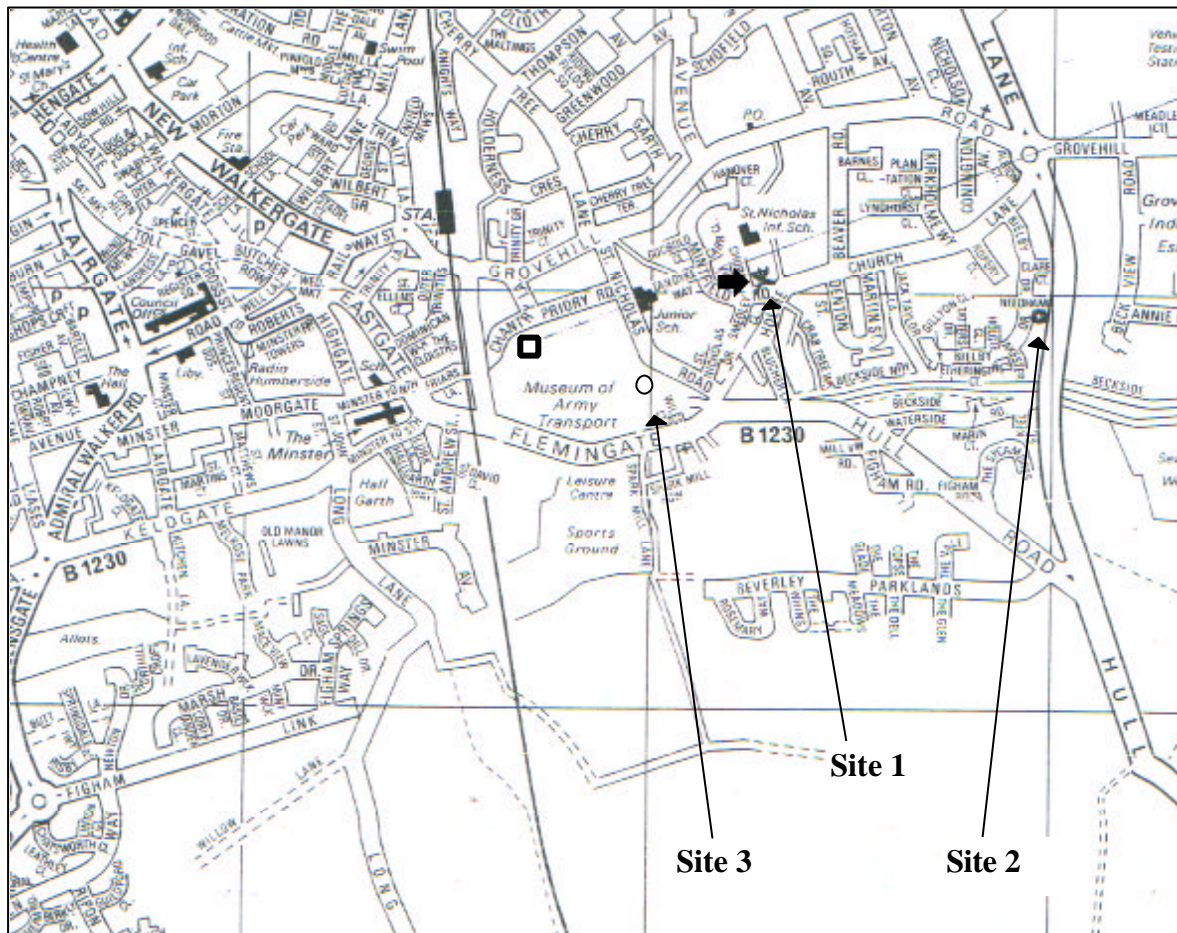


Figure 61- Position of site 1, site 2, and site 3 during plume tracking measurements.

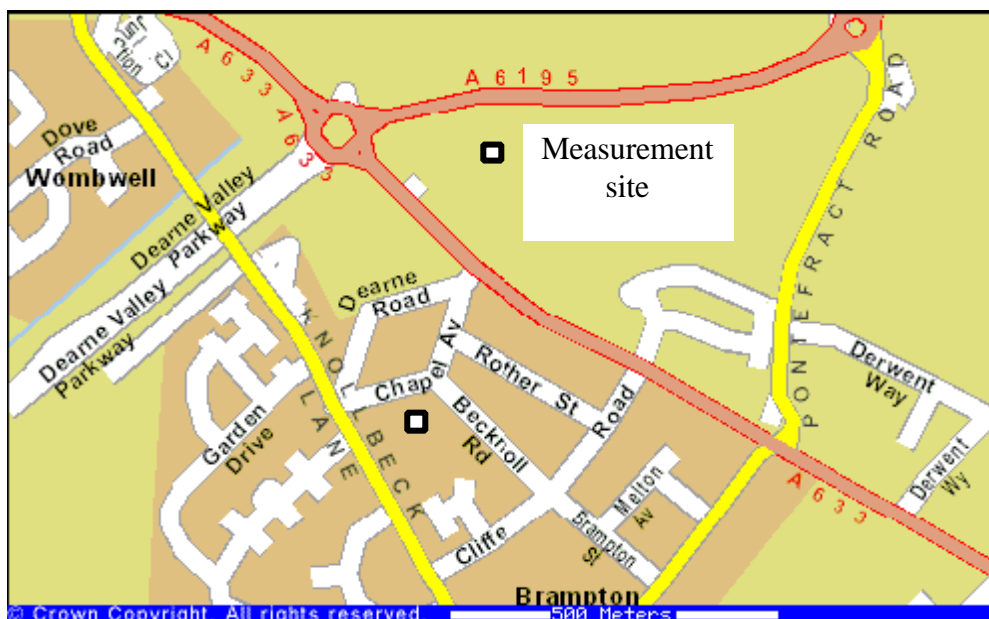


Figure 62 - Location of coal burning site measurements (Brampton, Rotherham).

Formaldehyde concentrations at Rotherham site

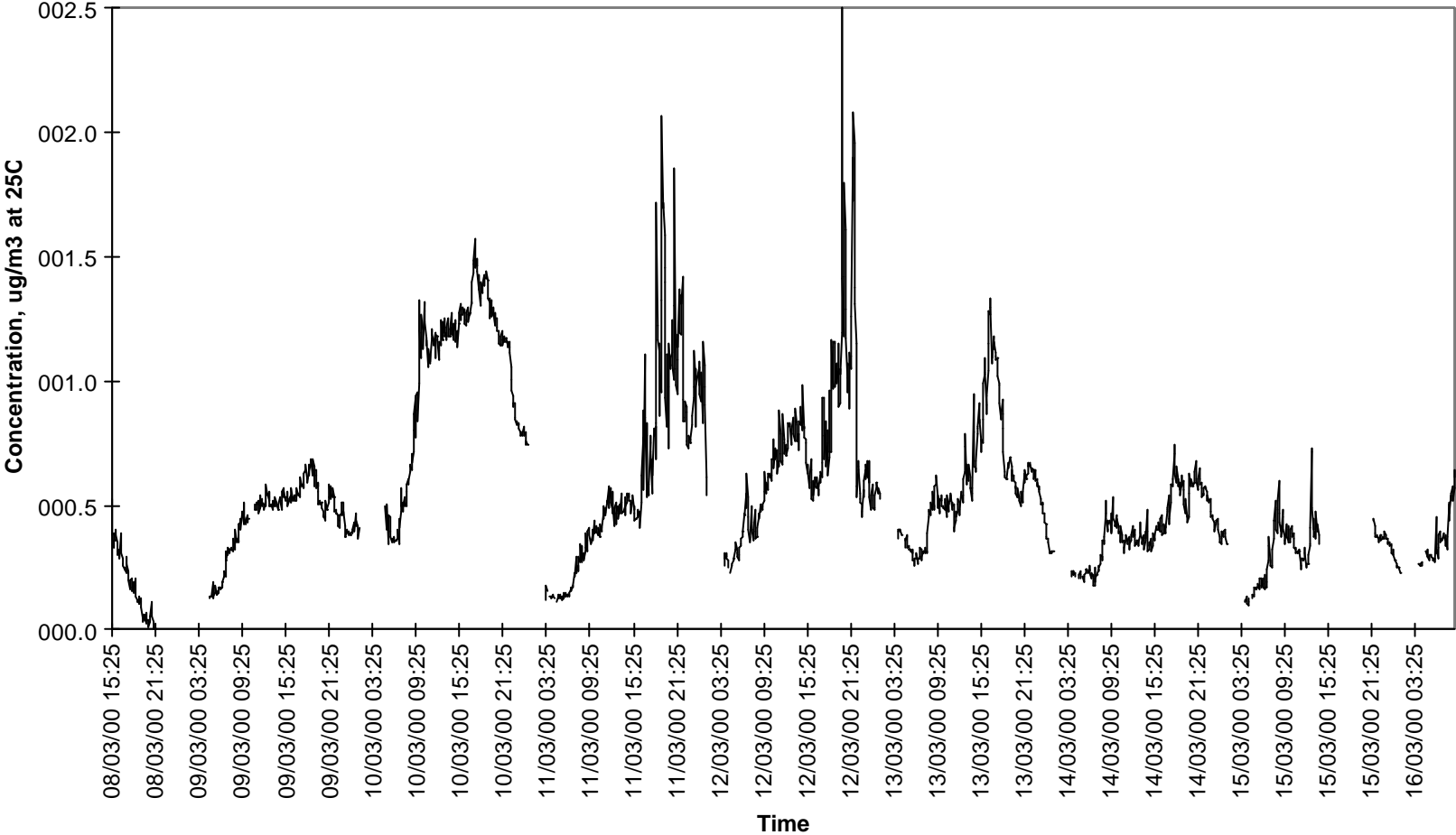


Figure 63- Time series of formaldehyde measurements at Rotherham.

NO_x and NO concentrations at Rotherham site

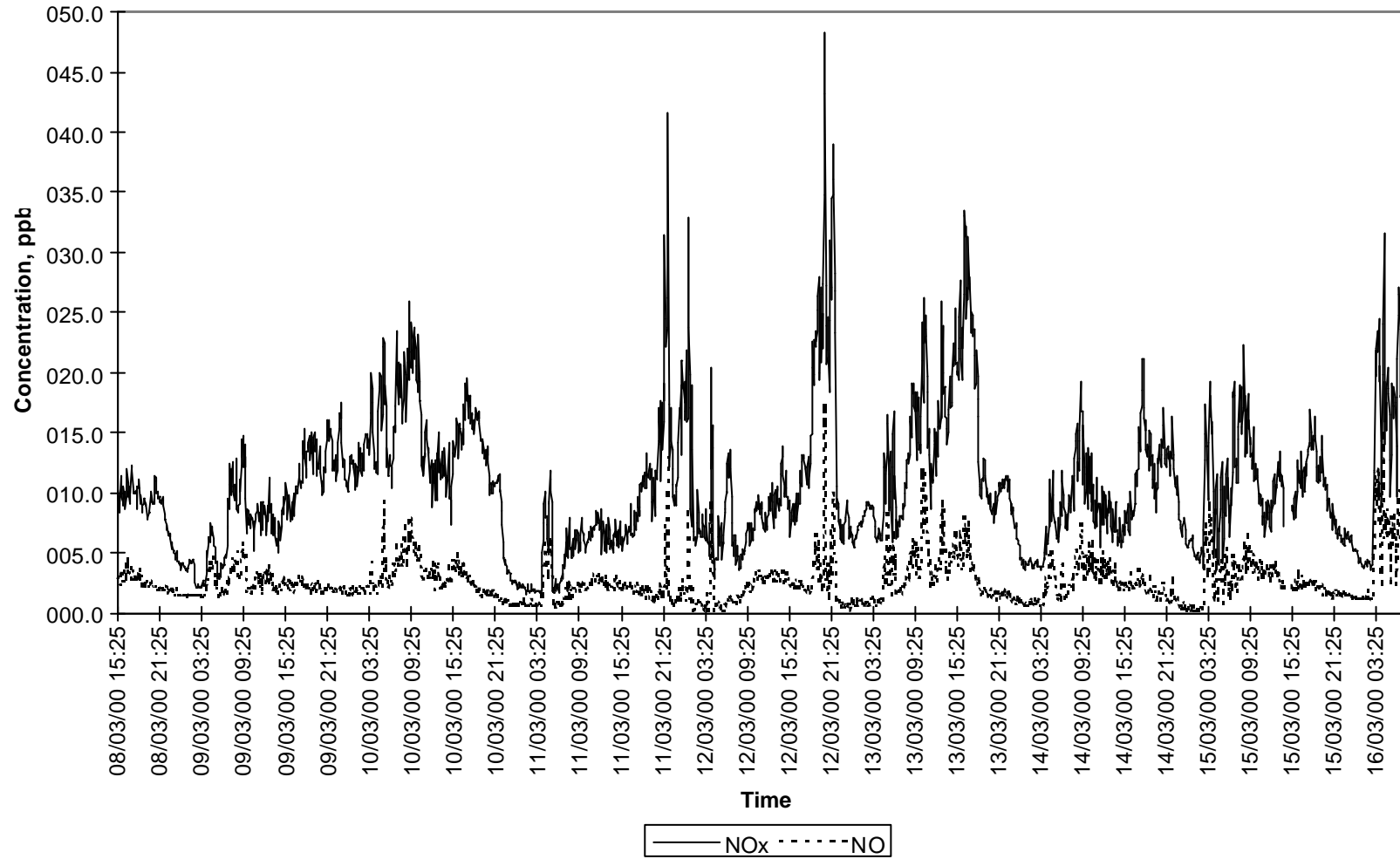


Figure 64 - Time series of NO_x/NO measurements at Rotherham.

NO₂ concentrations at Rotherham site

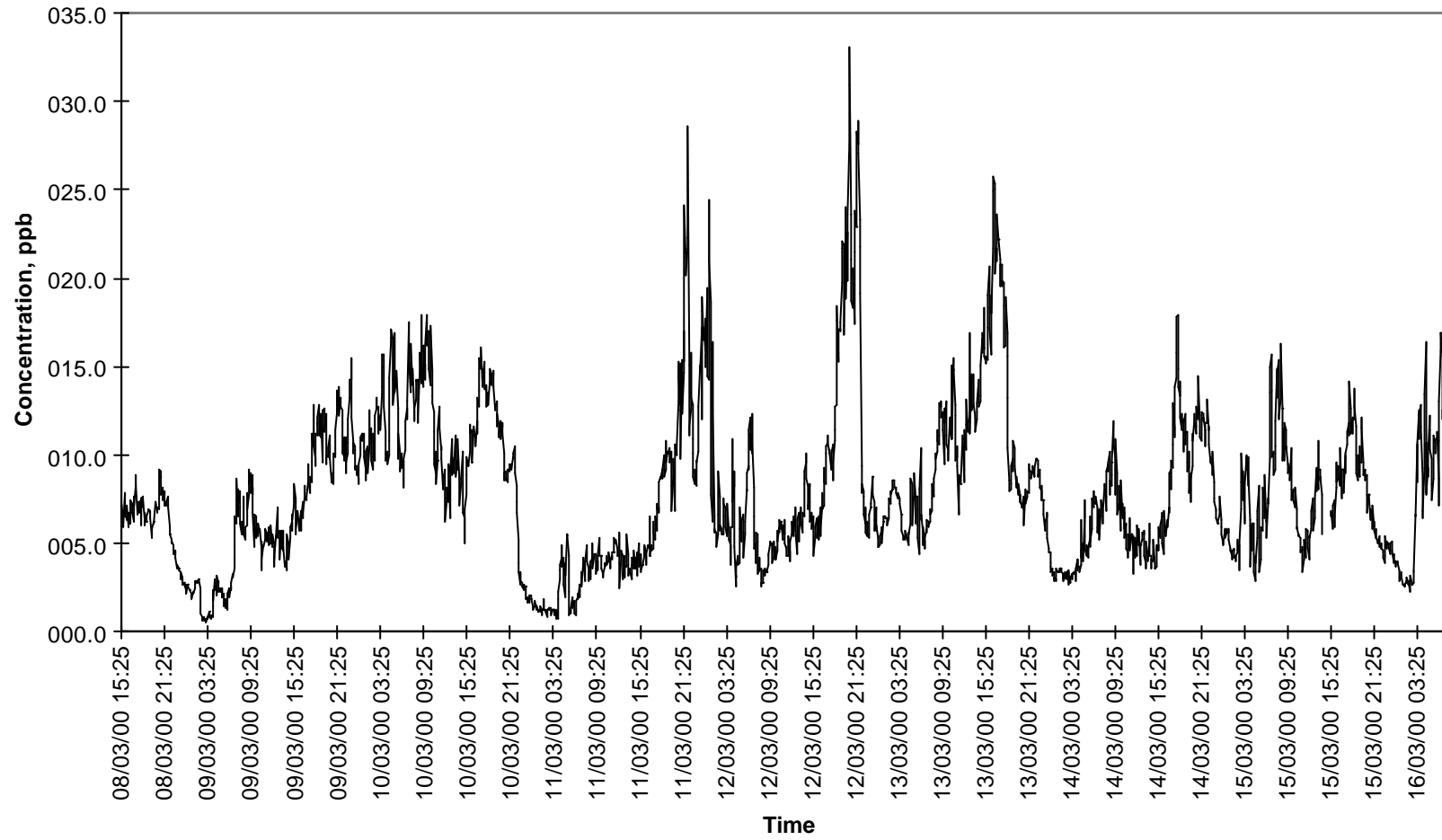


Figure 65 - Time series of NO₂ measurements at Rotherham.

Ozone concentrations at Rotherham site

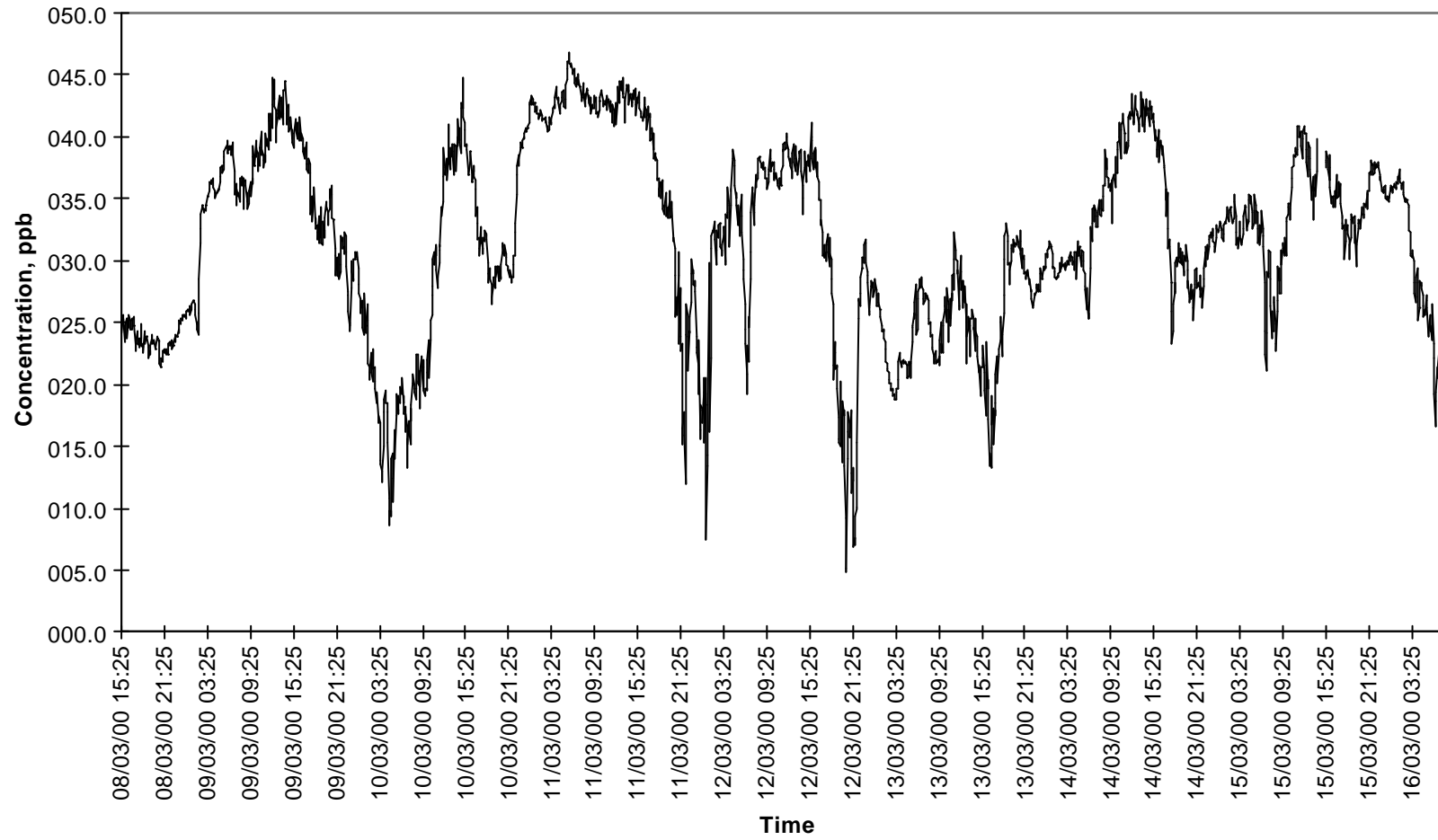


Figure 66 - Time series of O₃ measurements at Rotherham.

SO2 concentrations at Rotherham site

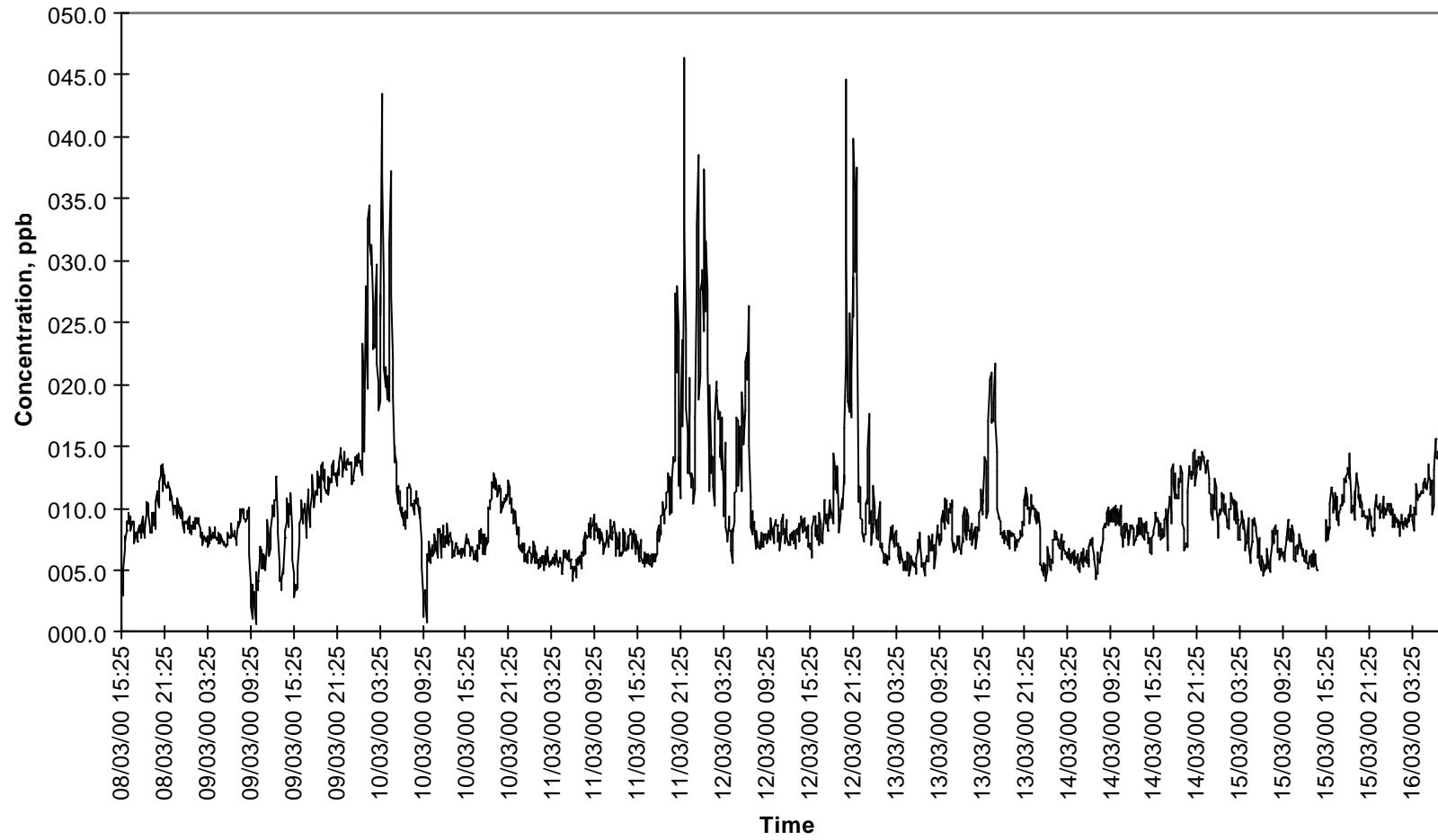


Figure 67 - Time series of SO₂ measurements at Rotherham.

CO concentrations at Rotherham site

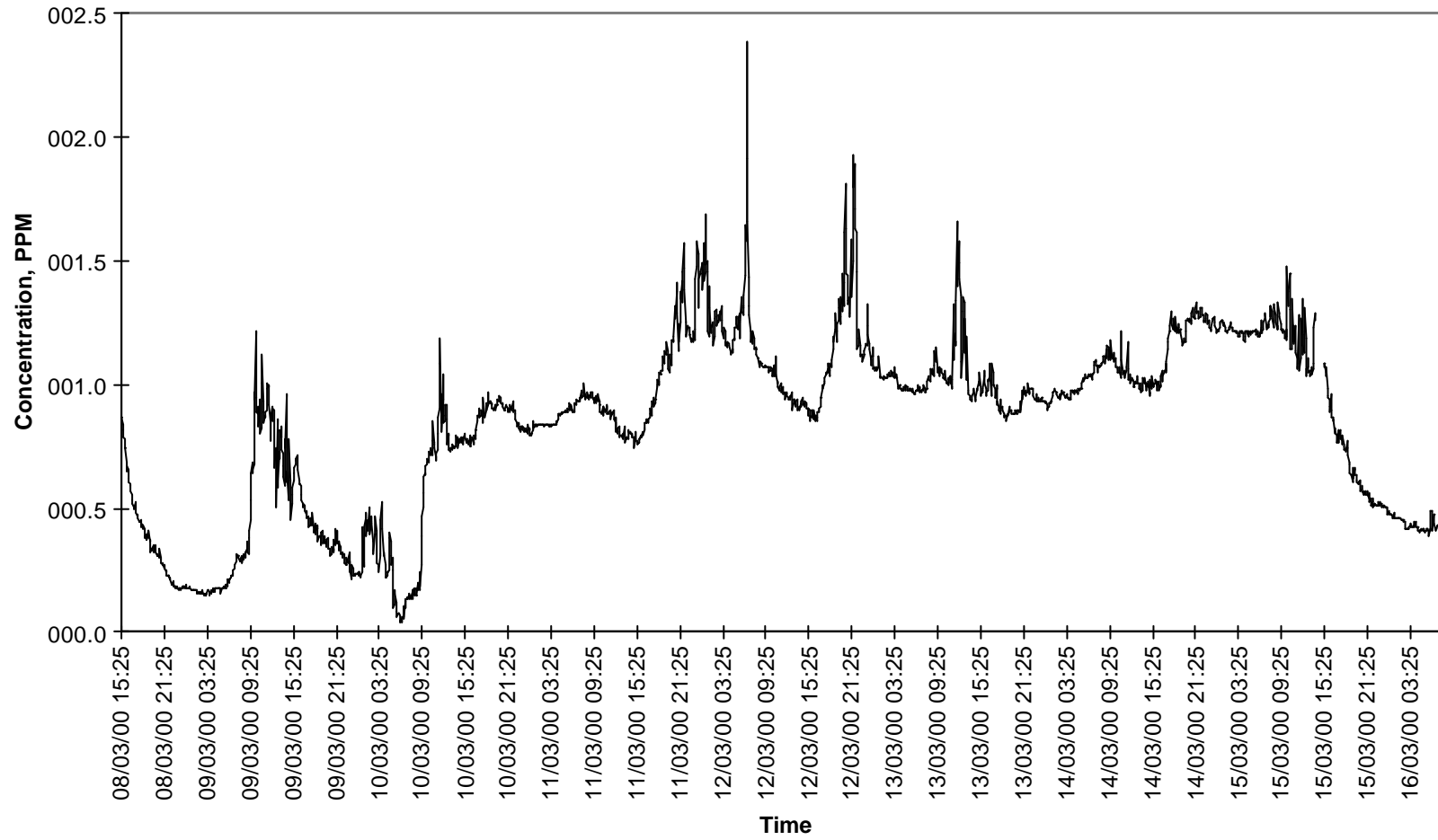


Figure 58- Time series of CO measurements at Rotherham.

PM10 concentrations at Rotherham site

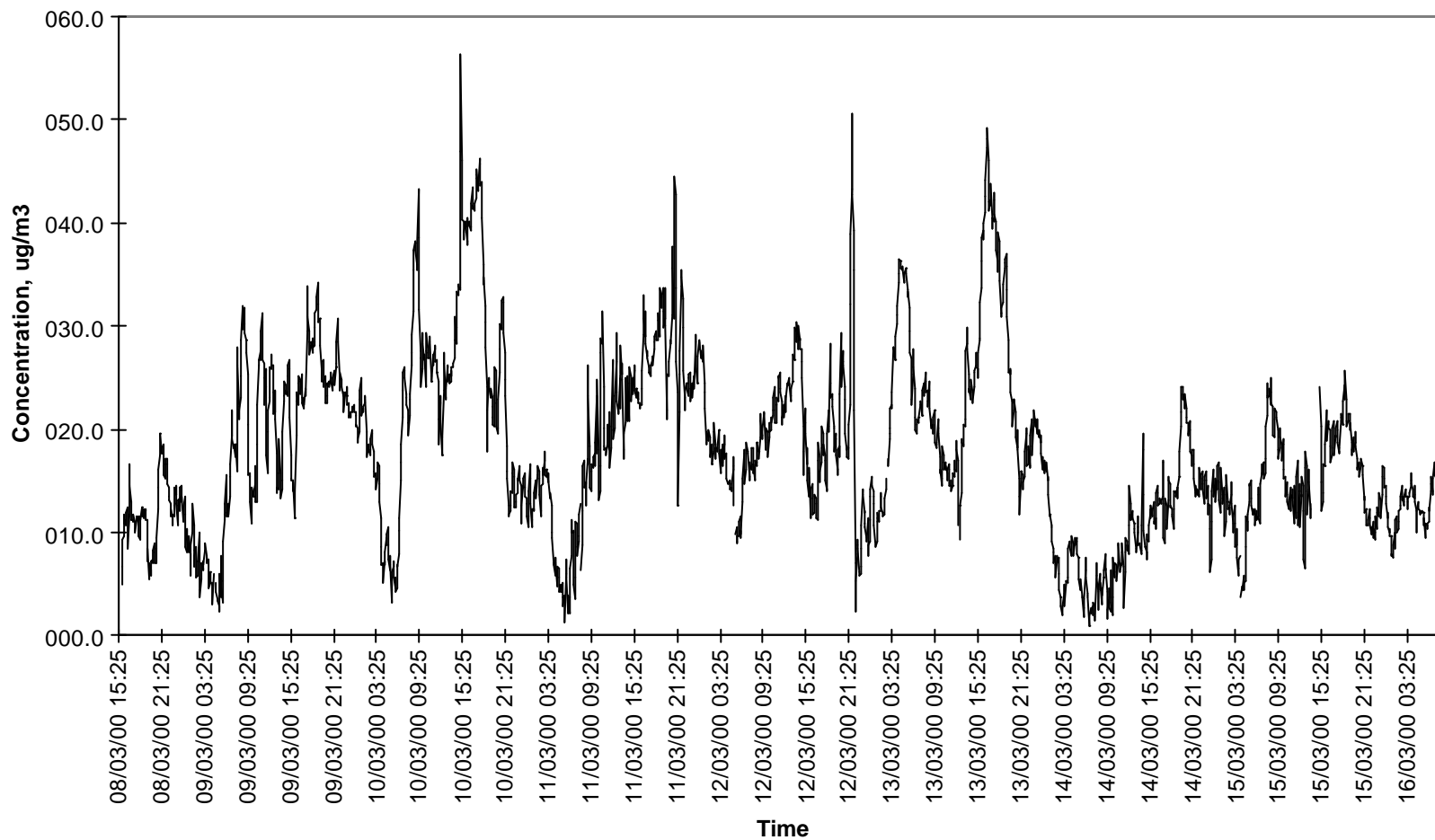


Figure 69 - Time series of PM10 measurements at Rotherham.

Diurnal Formaldehyde in ug/m3 at Rotherham site

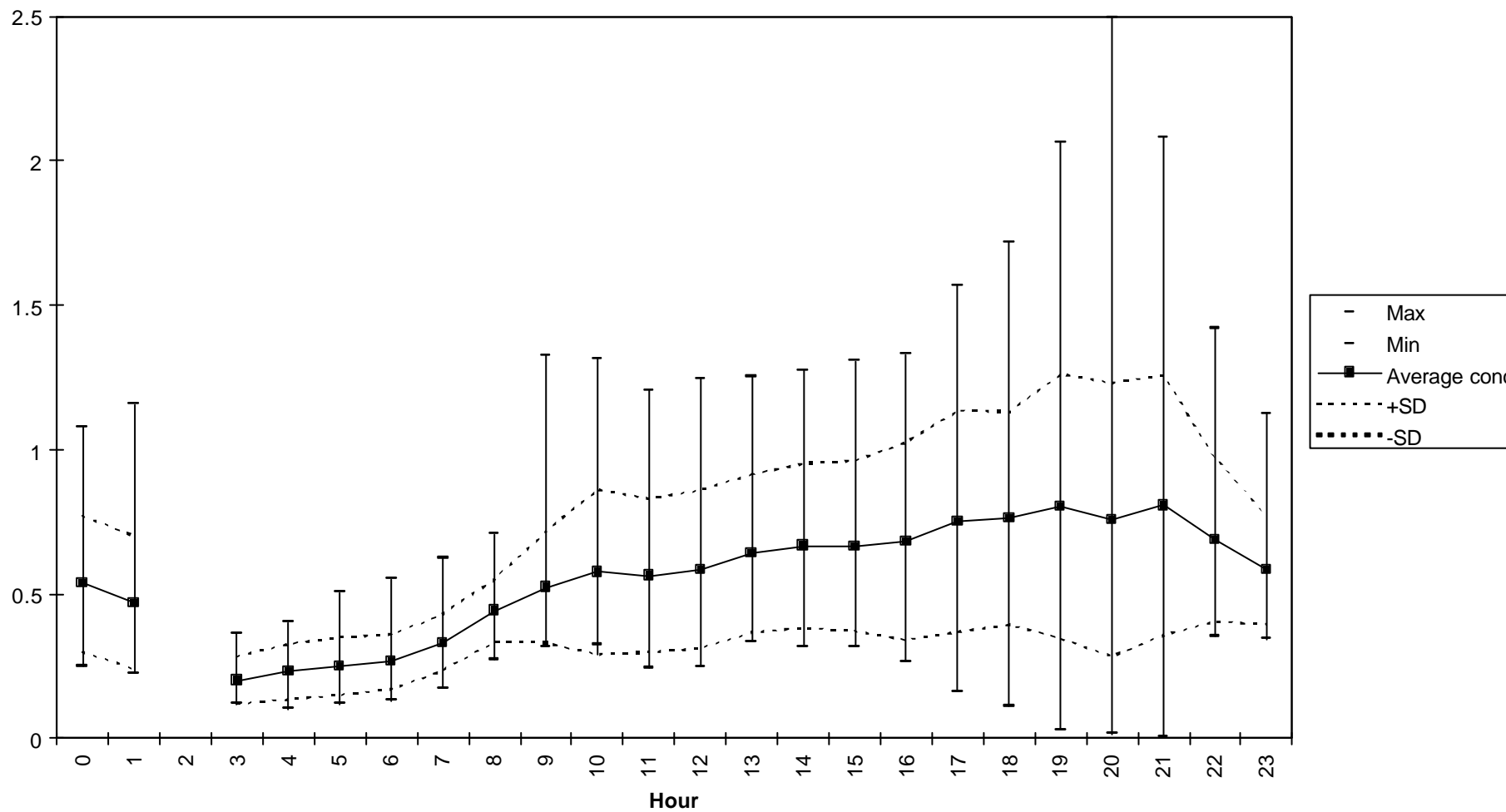


Figure 70- Diurnal variation in formaldehyde measurements at Rotherham.

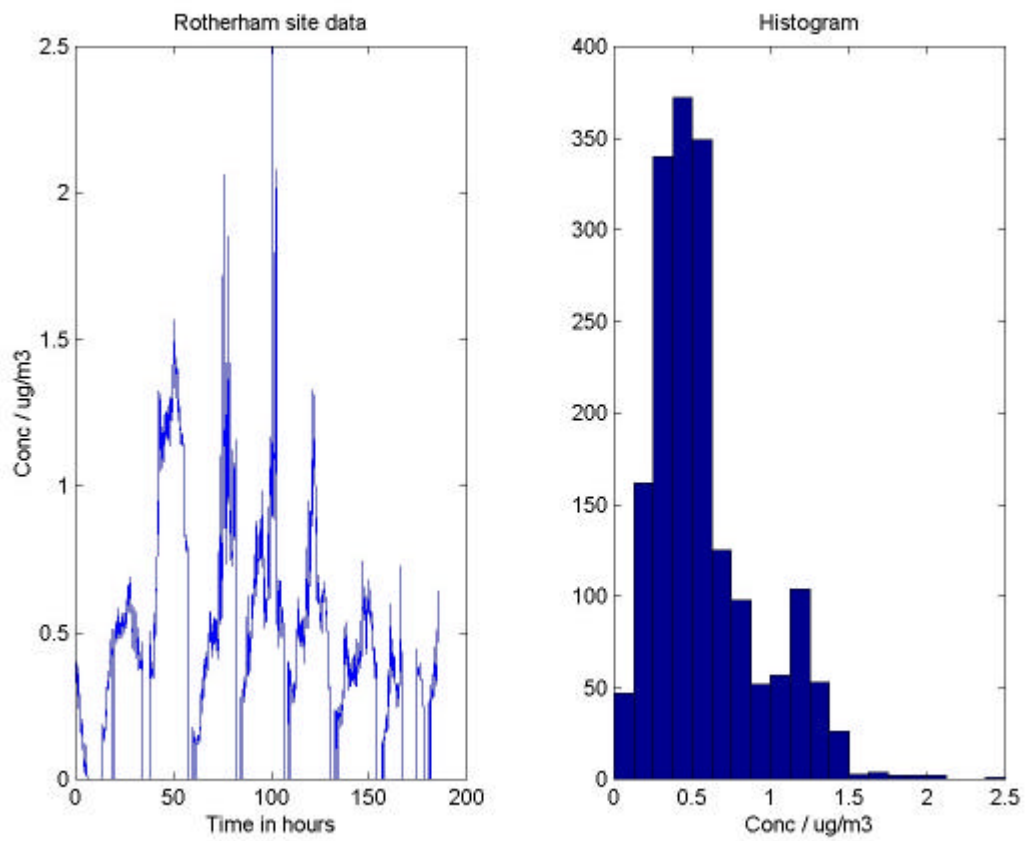


Figure 71- Histogram (frequency - concentration) plot for formaldehyde at Rotherham (averaging period of 5 minutes).